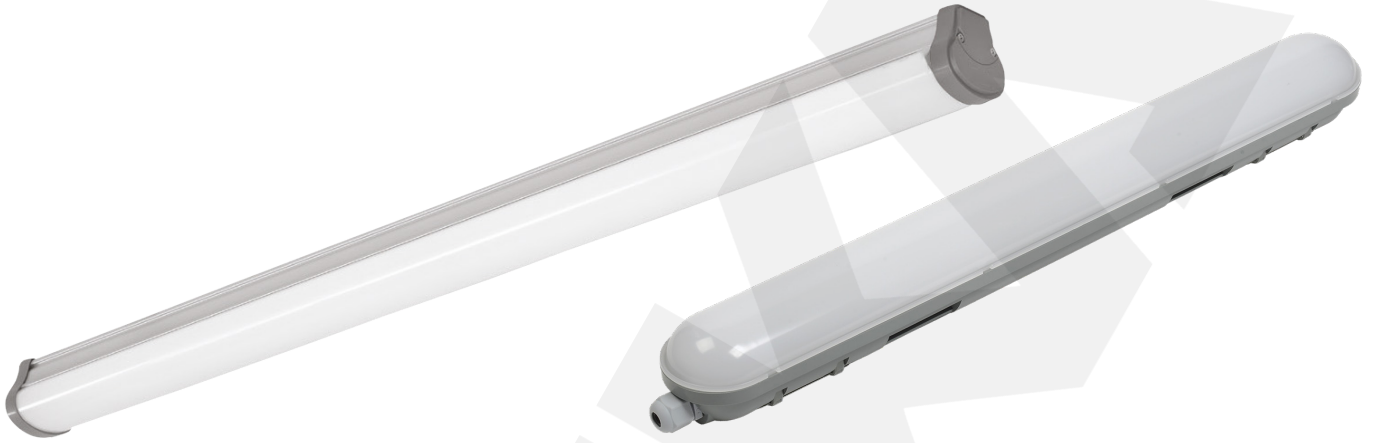


WATERPROOF LUMINAIRE



TECHNICAL DATA

Luminaire Body: Aluminium, Aluminium Poly-carbon Glass
Luminaire Optic: Opal Diffuser
Led Type: Mid Power LED
Power(W): From 10W up to 75W
Mains Voltage(V): From 220-240V
Colour Temperature(K): 3000K-4000K
IP Protection: IP65
Working Temperature(°C): From -20°C up to +35°C
Body Colour: Ral 9003
* Other colours can be produced upon the customer's requests.
* DALI, Corridor Function and Emergency Lighting Unit Application (Up to 3 hours working) options can be produced upon the customer's requests.

INTRODUCTION

Waterproof lighting fixtures are employed in areas that are constantly exposed to water, snow, dirt, or rain. Similarly, because these fixtures can endure deformations induced by water and ice, they can be put into a pavement. These fixtures, on the other hand, have a low or high IP rating. Low IP ratings indicate that they can be used in non-extremely damp indoor or outdoor environments. On the other hand, light fixtures with high IP ratings are required in areas where there will be a lot of water, dust, and the possibility of coming into touch with a lot of solid. These high-rated light fixtures are less sensitive to water, especially when the LED strip lights have waterproof coatings.

APPLICATION

- Gas Stations
- Sport Facilities
- Plants
- Residential Areas
- Industrial Kitchens





Waterproof T8 Luminaire



Waterproof T8 Luminaire



Waterproof T8 Luminaire



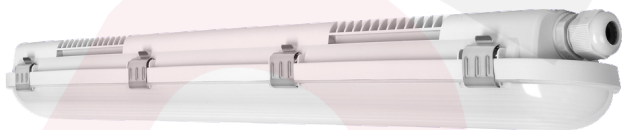
Waterproof T5 Luminaire



Waterproof T5 Luminaire



Waterproof T5 Luminaire



Waterproof Luminaire



Waterproof Luminaire



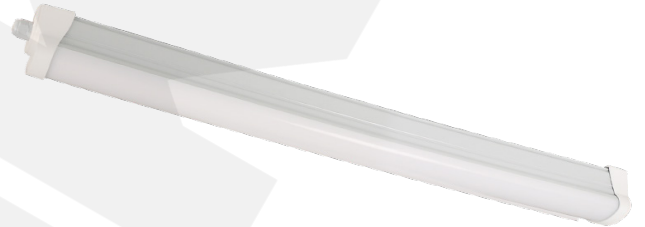
Waterproof Luminaire



LED Waterproof Luminaire



LED Waterproof Luminaire



LED Waterproof Luminaire