

PARK & GARDEN LIGHTINGS



TECHNICAL DATA

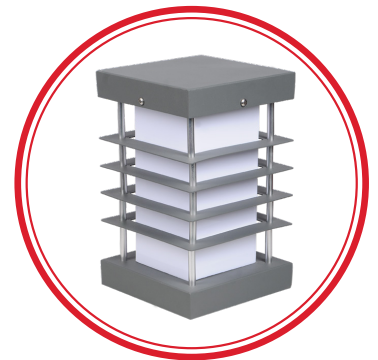
Luminaire Body: Poly Carbonate, Aluminium, Aluminium Injection(with/without Electrostatic Powder)
Luminaire Diffuser: PMMA, Clear Glass, Opal Diffuser
Led Type: High-power LED
Power(W): From 8W up to 150W
Mains Voltage(V): From 220-240V
Colour Temperature(K): 3000-6500K
Working Temperature(°C): From -20°C up to +50°C
IP Protection: IP20 - IP40 - IP60
Body Colour: Ral 9003
* Other colours can be produced upon the customer's requests.

INTRODUCTION

The use of outdoor illumination of public landscapes and private gardens is referred to as park and garden lighting, sometimes known as landscape lighting. This style of lighting is mostly utilized for accessibility, aesthetics at night, and safety. LED garden lights are being heralded as the next great thing in energy-efficient lighting. LED lights have properties that make them particularly well suited for outdoor use.

APPLICATION

- Streets
- Residential Areas
- Squares
- Parks





Injection Aluminium Indirect Luminaire



Injection Aluminium Indirect Luminaire



Injection Aluminium Indirect Luminaire



Park and Garden Luminaire Sets



Park and Garden Luminaire Sets



Park and Garden Luminaire Sets



Park and Garden Luminaire



Park and Garden Luminaire



Park and Garden Luminaire



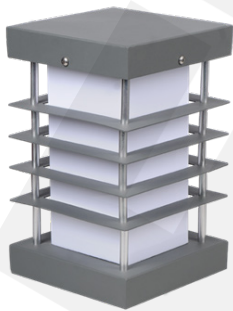
Grass Luminaire



Grass Luminaire



Grass Luminaire



Wall Top Luminaire



Wall Top Luminaire



LED Appliqués



LED Appliqués



Appliqué



Appliqué



Recessed Wall
Appliqué Luminaire



Recessed Wall
Appliqué Luminaire



Recessed Wall
Appliqué Luminaire