

## FLOODLIGHTS



### TECHNICAL DATA

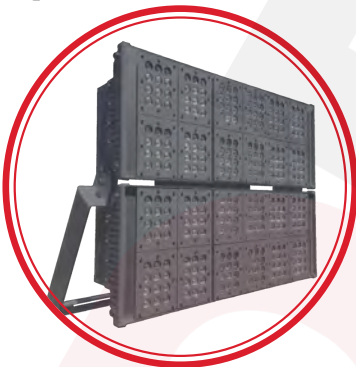
**Luminaire Body:** Metal, Polymer Injection Body, Aluminium Extrusion  
**Luminaire Diffuser:** Highly transmissive PMMA, Glass  
**Led Type:** Continuous LED Luminaire  
**Power(W):** From 30W up to 1000W  
**Mains Voltage(V):** From 220-240V  
**Colour Temperature(K):** 3000-6500K  
**Working Temperature(°C):** From -20°C up to +50°C  
**IP Protection:** IP20 - IP40 - IP60  
**Body Colour:** Ral 9003  
\* Other colours can be produced upon the customer's requests.

### INTRODUCTION

Floodlights are enormous, man-made light sources having a wide beam and strong lights. Floodlights are most often used in areas that require a lot of artificial light.

### APPLICATION

- Airports
- Concert Area
- Sport Facilities
- Theatre Halls
- Construction Area
- Open Parking Lots
- Squares





Floodlights



Floodlights



Symmetric Floodlights



Symmetric Floodlights



Asymmetric Floodlights



Asymmetric Floodlights



Halogen Floodlights



Halogen Floodlights



Tunnel Luminaire



Tunnel Luminaire



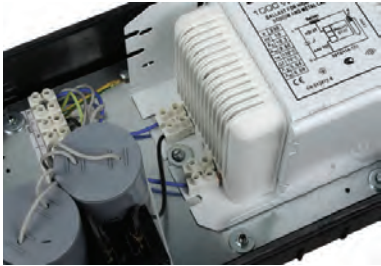
LED Floodlights



LED Floodlights



High Pressure Ballast Kits



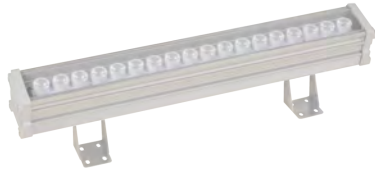
High Pressure Ballast Kits



High Pressure Lamp



High Pressure Lamp



Surface Mounted RGB Wall-washer



Surface Mounted RGB Wall-washer



Recessed Wall-washer



Pool Luminaire



Pool Luminaire