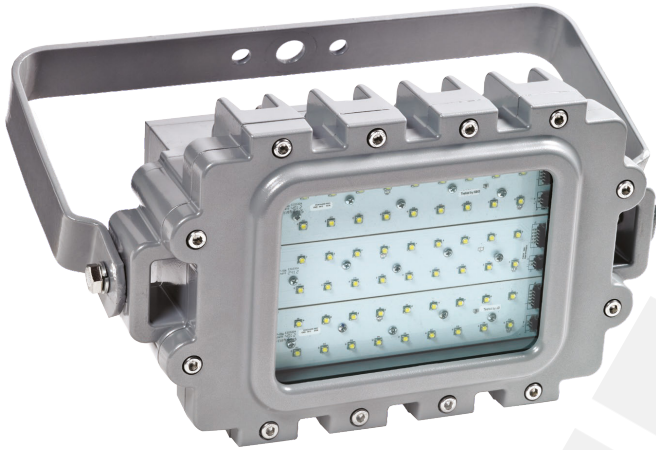


EX-PROOF LED FLOODLIGHTS



TECHNICAL DATA

Luminaire Body: Poly Carbonate, Aluminium, Aluminium Injection(with/without Electrostatic Powder)
Luminaire Diffuser: PMMA, Clear Glass, Opal Diffuser
Led Type: High-power LED
Power(W): From 8W up to 150W
Mains Voltage(V): From 220-240V
Colour Temperature(K): 3000-6500K
Working Temperature(°C): From -20°C up to +50°C
IP Protection: IP66
Body Colour: Ral 9003
* Other colours can be produced upon the customer's requests.

INTRODUCTION

Explosion-proof floodlight provides the greatest protection for facilities that store, refine, or manufacture combustible, flammable, or ignitable materials. The long-lasting and robust electrostatic surfacing is applied to the heavy-duty, anodized die-cast shell. This extra protection prevents over voltage and heating, as well as the build up of electrostatic energy.

APPLICATION

- Chemistry Plants
- Paint Plants
- Oil Storage Facility
- Energy Plant
- Harbor and Shipyard
- Oil Filling Plants
- Industrial Areas
- Fuel-Oil Station

