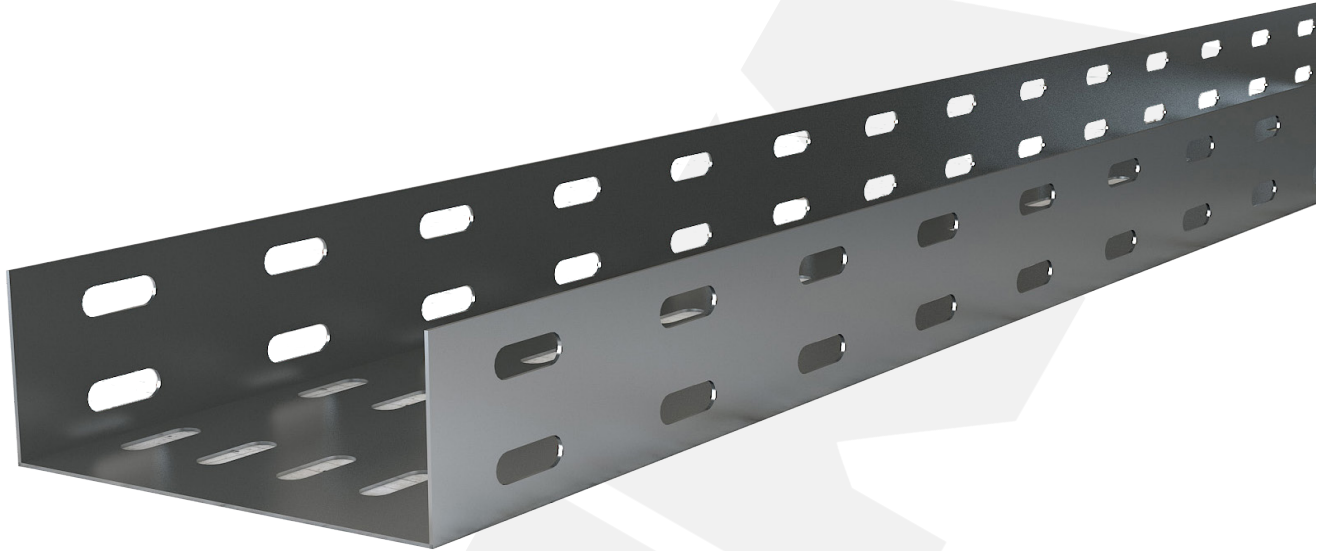


STANDARD TYPE CABLE TRAYS



TECHNICAL DATA

Width: From 50mm up to 600mm
Height: From 40mm up to 60mm
Length: Up to 6m
Thickness: Between 1.0mm and 2.0mm
* Special dimension can be produced upon the customer's requests.

CABLE TRAY MATERIALS

- Steel
- Stainless Steel
- Aluminium

CABLE TRAY FINISHING

- Hot-dipped Galvanized Cable Trays
- Pre-Galvanized Cable Trays
- Electro-Static Powder Coating

INTRODUCTION

A Cable Tray is a bridge that enables for the safe transit of wires across open spans while also providing protection from overheating and fire build-up. It's a basic cable management system that comes in a variety of sizes to make entering and exiting new or existing cables in the tray easier. These are typically used to transport huge web bundles and protect them from harm.

ACCESSORIES

- Cable Tray Cover
- Coupler
- Adjustable Coupler
- Horizontal Bends 45°
- Horizontal Bends 90°
- Reducer
- Tee Bend
- Crossing Elements
- Inside Vertical Bend
- Outside Vertical Bend
- End Cap
- Separator

