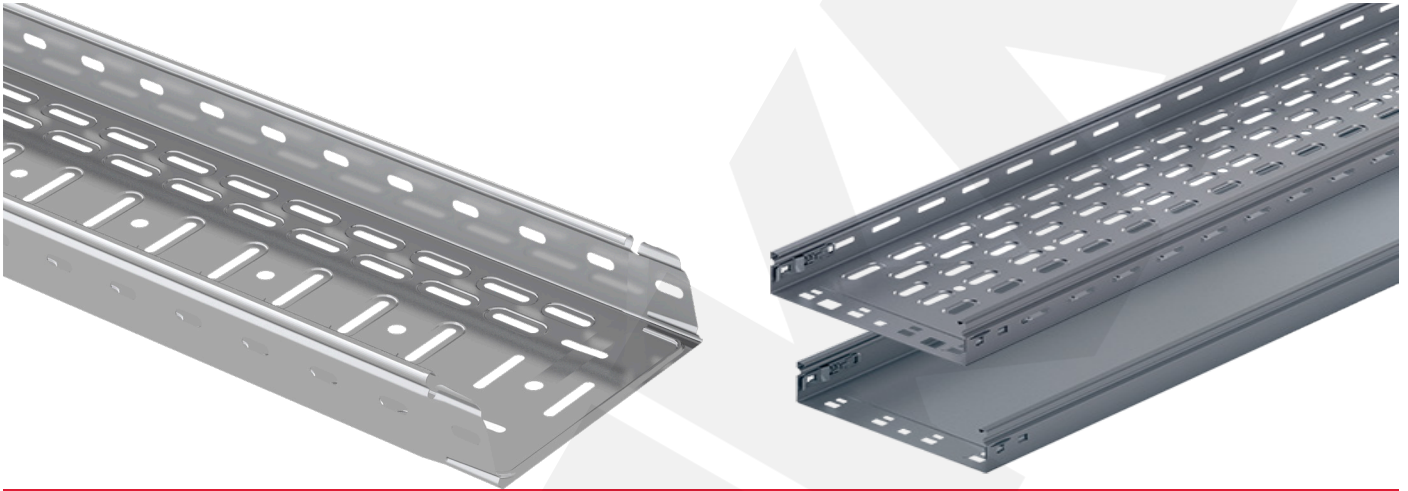


MARINE TYPE and LIGHTING FIXTURE TYPE CABLE TRAYS



TECHNICAL DATA

Width: From 50mm up to 600mm
Height: From 15mm up to 60mm
Length: Up to 3m
Thickness: From 0.6mm up to 2.0mm
* Special dimension can be produced upon the customer's requests.

CABLE TRAY MATERIALS

- Steel
- Stainless Steel
- Aluminium

CABLE TRAY FINISHING

- Hot-dipped Galvanized
- Pre-Galvanized
- Electro-Static Powder Coating

INTRODUCTION

Marine type and lighting fixture type cable trays are due to use in ship construction and carry cable installations within interior spaces of ships, yachts and also indoor applications. Marine type cable trays are constructed in customized sized to avoid cable's exposure to heat.

ACCESSORIES

- Cable Tray Cover
- Coupler
- Adjustable Coupler
- Horizontal Bends 45°
- Horizontal Bends 90°
- Reducer
- Tee Bend
- Crossing Elements
- Inside Vertical Bend
- Outside Vertical Bend
- End Cap
- Separator

