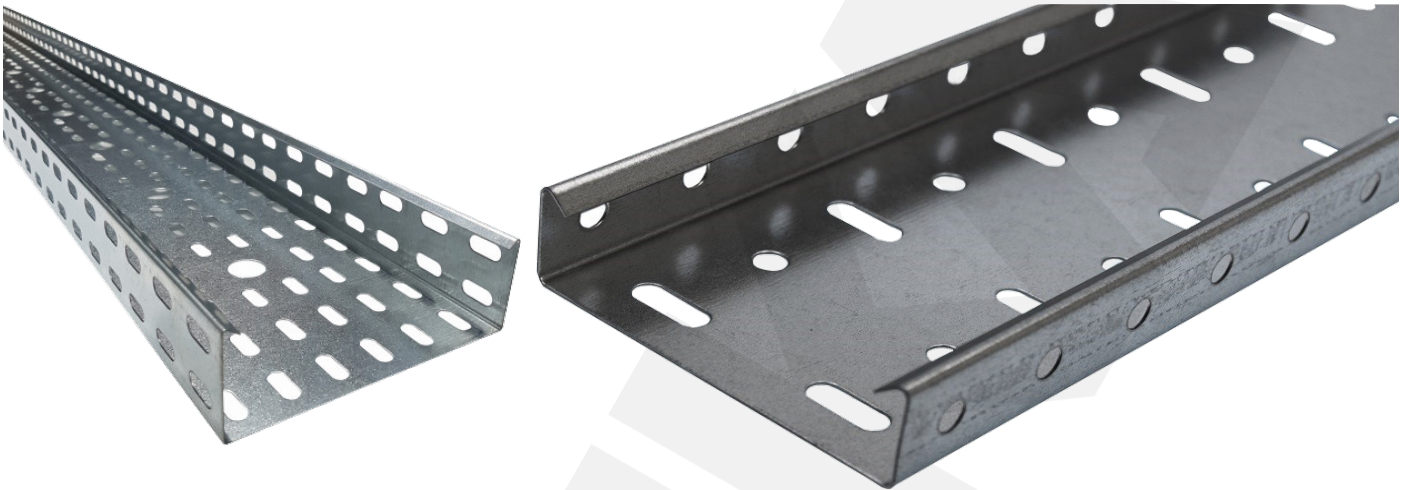


HEAVY DUTY CABLE TRAYS



TECHNICAL DATA

Width: From 50mm up to 600mm
Height: From 40mm up to 100mm
Length: Up to 6m
Thickness: Between 0.6mm and 2.0mm
* Special dimension can be produced upon the customer's requests.

CABLE TRAY MATERIALS

- Steel
- Stainless Steel
- Aluminium

CABLE TRAY FINISHING

- Hot-dipped Galvanized Cable Trays
- Pre-Galvanized Cable Trays
- Electro-Static Powder Coating

INTRODUCTION

Heavy Duty Cable Trays are used in industrial facilities such as Petrol and Gas facilities. These cable trays are resistant to cable weights.

ACCESSORIES

- Cable Tray Cover
- Coupler
- Adjustable Coupler
- Horizontal Bends 45°
- Horizontal Bends 90°
- Reducer
- Tee Bend
- Crossing Elements
- Inside Vertical Bend
- Outside Vertical Bend
- End Cap
- Separator

