

## CABLE SUPPORT SYSTEMS



### GENERAL INFORMATION

Cable Support Systems are used to hold systems in steel structures at buildings and enterprises in an appropriate manner. Light-duty and heavy-duty brackets are offered depending on the weight of the system to be supported. Pre-galvanized, Hot Dip Galvanized, and Painted Cable Support Systems can be produced in thicknesses ranging from 2mm to 6mm, depending on the kind of coating. Hot dip galvanized brackets are used for any brackets that need welding during manufacturing. It is also feasible to develop support systems and shaft supports that are customized to the requirements, as well as to give solutions for building site needs.

### APPLICATION

- Commercial Construction
- Industrial Construction

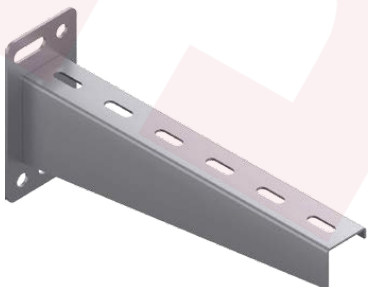
### CABLE SUPPORT S. TYPES

- Wall Brackets (Unwelded)
- Wall Brackets (Welded)
- L-C-U-Z Profiles
- Connection Units

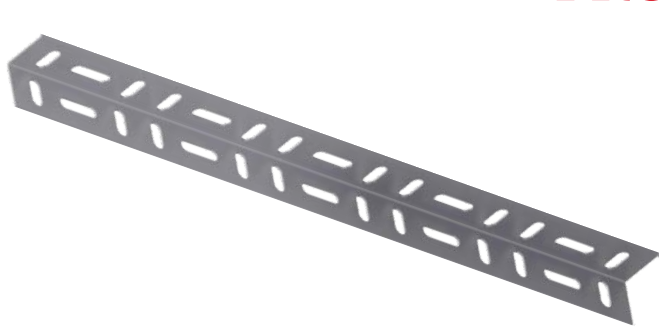
### WALL BRACKETS (UNWELDED)



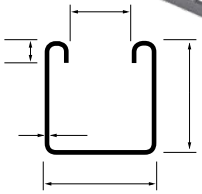
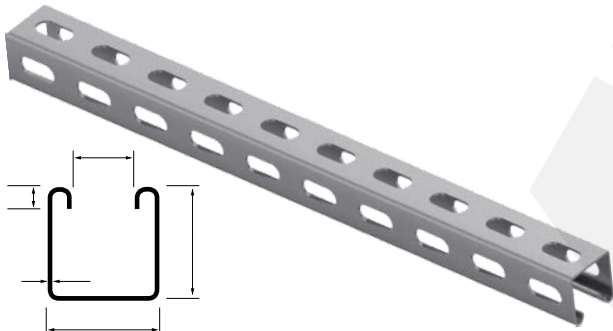
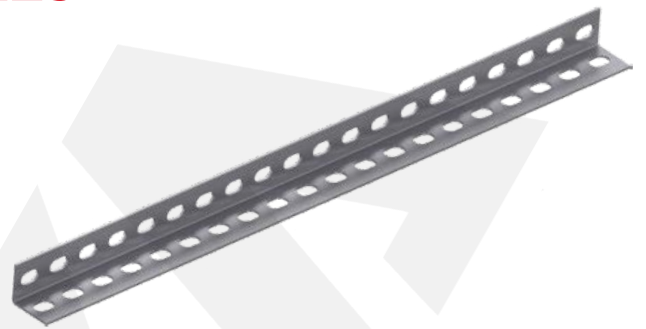
### WALL BRACKETS (WELDED)



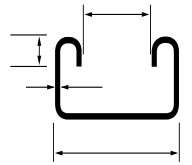
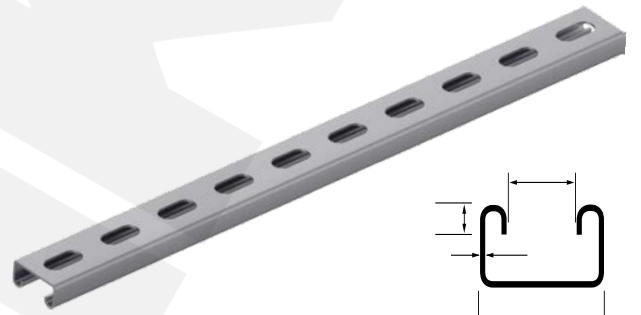
## PROFILES



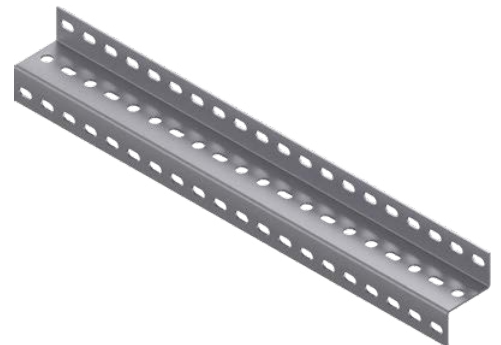
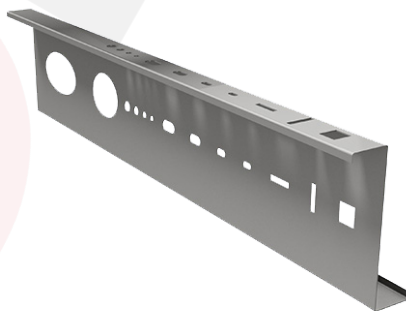
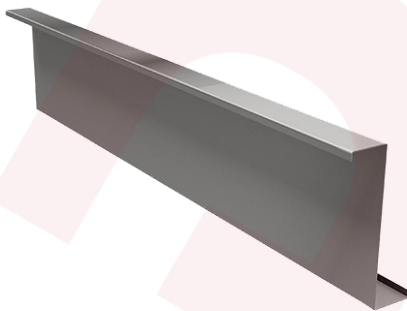
L Profile



C Profile



U Profile



Z Profile

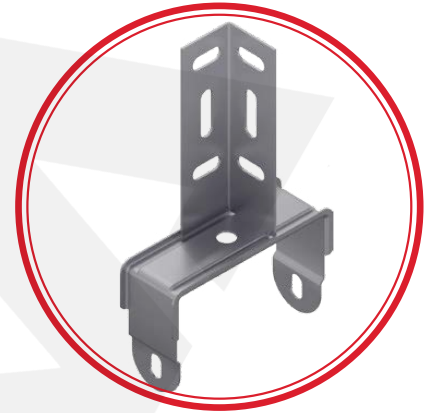
## CONNECTION UNITS



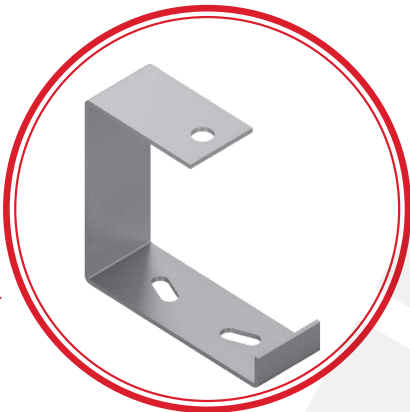
L Profile Mounting Unit



L Profile Mounting Unit



L Profile Support



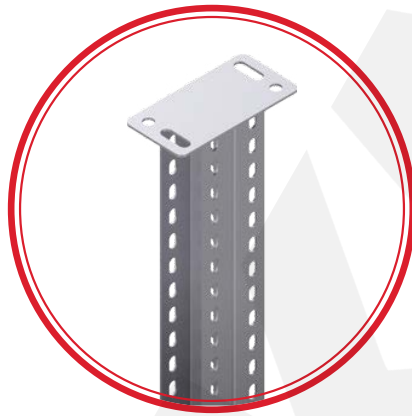
Tray Supports For Threaded Rods



Ceiling Mounting Fittings



Ceiling Mounting Fittings



Ceiling Mounting Fittings



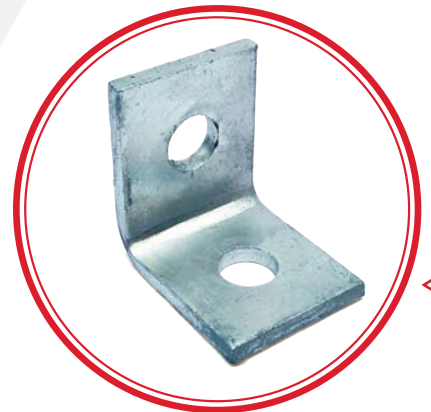
U Profile Joint Element



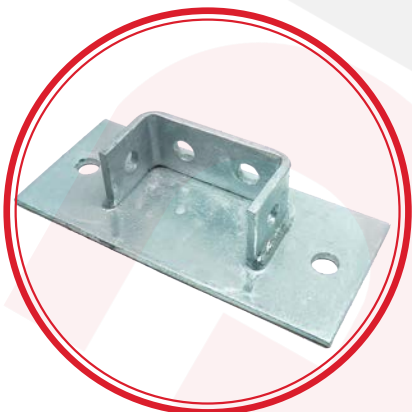
U Profile Brackets



45° Channel Bracket



90° Channel Bracket



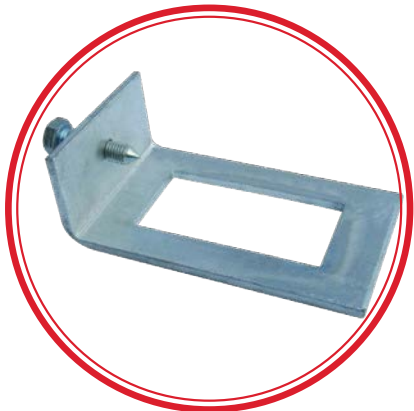
Base Plates



Beam Clamp



Channel Accessories



Window Bracket



Channel Nuts



Internal Splice



External Splice



Flat Gusset Tee



Flat Plates



PVC End Caps



Special Fittings



Channel Closure Strips