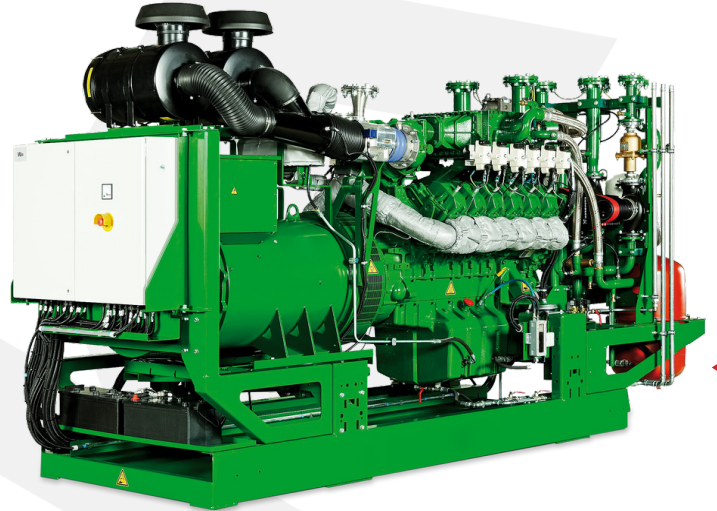


## BIO-GAS GENERATORS



### TECHNICAL DATA

**Stand-by Power Range (kVA):** from 77kVA up to 1261kVA  
**Stand-by Power Range (kW):** from 62kW up to 1009kW  
**Prime Power Range (kVA):** from 77kVA up to 1261kVA  
**Prime Power Range (kW):** from 62kW up to 1009kW  
**Frequency(Hz):** 50Hz  
**Fuel Type:** Bio-gas  
**Canopy Colour:** Optional  
**Synchronization Panel:** Optional

**Stand-by Power:** It refers to limited time operation at variable load where the mains is good. Overloading is not allowed.

**Prime Power:** It means working for unlimited time at 70% average load as mains backup. 10% overload is allowed.

### INTRODUCTION

Bio-gas generators are eco friendly and sustainable generators to produce bio-gas through the breakdown of organic matter, meaning less waste and more usable products for a variety of applications. A bio-gas digester is like a housing system for bio-gas production, allowing the process to go along without unwanted interference from outside influences. Working with bio-gas as a renewable energy source, these generator sets are the most environmentally friendly electricity generation systems. Organic wastes occur for different reasons. While these gas-powered generator sets prevent waste from being released to nature, they also reduce energy production costs.

### APPLICATION

- Construction
- Agriculture
- Industry

