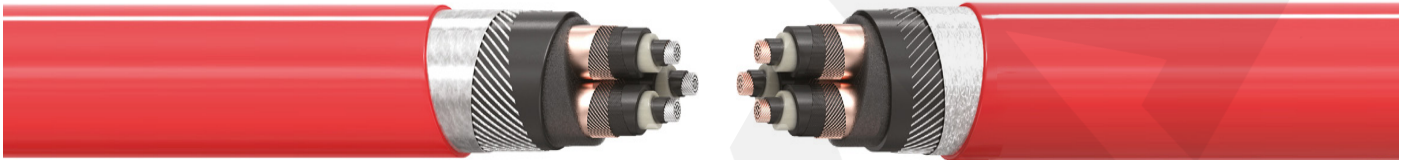


## 18/30kV THREE CORES MEDIUM VOLTAGE POWER CABLES



### TECHNICAL DATA

- Max. Operating Temperature: 90°C
- Max. Short Circuit Temperature: 250°C (max. 5 sec.)
- Rated Voltage: 18/30 kV (Um: 36.000V)
- Min. Bending Radius: 15x Cable Outer Diameter
- Production Standards: IEC 60502-2; VDE 0276-620

### CONSTRUCTION

- Stranded Class 2 Copper or Aluminium Wire
- Inner layer of semi-conducting material
- XLPE Insulation
- Outer layer of semi-conducting material
- Semi-conducting tape
- Screen of copper wires
- Inner covering over laid-up cores
- Metallic Armour : Galvanised Steel Wires or Double Steel Tapes or Flat Steel Wires+ Steel Tape
- Outer sheath of Polyvinylchloride (PVC) or Polyethylene (PE)

### CODE of CABLE

- **For the Cables with Copper Conductor:**  
Cu/XLPE/CTS/PVC/SWA/PVC; N2XSEYRY; N2XSEYBY;  
N2XSEYGbY, N2XSEYR(FL)2Y; YXC8VZ2V-R, YXC8V  
Z3V-R; YXC8VZ4V-R; YXC8VZ2(Q)2Y-R
- **For the Cables with Aluminium Conductor:**  
Al/XLPE/CTS/PVC/SWA/PVC; NA2XSEYRY;  
NA2XSEYBY; NA2XSEYGbY; NA2XSEYR(FL)2Y;  
YAXC8VZ2V-R, YAXC8VZ3V-R; YAXC8VZ4V-R;  
YXC8VZ2(Q)2Y-R V

### APPLICATION

These cables refer to **ARMOURED** power cables with a rated voltage of 18/30 kV. These are cables with low dielectric losses used in energy networks with sudden load changes. Laid in residential or industrial areas, underground in ducts and where is a risk of mechanical damage. Due to having **ARMOUR**, These cables can be used for heavy installation and mounting conditions. They are also used under normal and salty water if specially produced.

### SECTION RANGE

- **For the Power Cables with Copper Conductor:**  
From 35mm<sup>2</sup> up to 400mm<sup>2</sup>
- **For the Power Cables with Aluminium Conductor:**  
From 35mm<sup>2</sup> up to 400mm<sup>2</sup>

### SPECIAL FEATURES

- Cables can be supplied with special flame retardant PVC or Halogen Free Flame retardant(HFFR) outer sheath to comply with the flame test requirements of IEC 60332 Category A-B and C upon special request.
- Cables can be supplied with Polyethylene outer sheath material upon special request.
- Cables can be supplied with Longitudinally or Radial+Longitudinally sealed watertight tape (Swellable tape) upon special request.
- Cables can be supplied without armour upon special request