



DEMKA DIS TICARET ve PAZARLAMA A.S

Barbaros Mh. Begonya Sk .NidaKule Atasehir Kuzey 3A Kat : 21 No:184 34746 B.Atasehir/Istanbul, TURKIYE

Tel: +90 216 5921616 **Fax:** +90 216 5921626 **E-mail:** demka@demkaexport.com **Web:** www.demkaexport.com



DEMKA, established in 1993, has been growing rapidly thereby increasing its market activity throughout the years.

DEMKA is a privately owned electrical materials supplier offering “*All In One at Single Source*” solutions for all your electrical & industrial material needs .

Our main aim is to provide our customers with high standard of service and top quality products at competitive price.

We try to give you the advantage of supplying all your electrical items from one source instead of spending your time and money on searching suppliers and trying to develop business relations each time.

We are committed to our philosophy of being a true partner where our clients need us the most.
Our company offers years of experience in the market to your service, matching the best quality and good prices with your needs.

DEMKA is currently a "preferred supplier" shortlisted with many authorities.

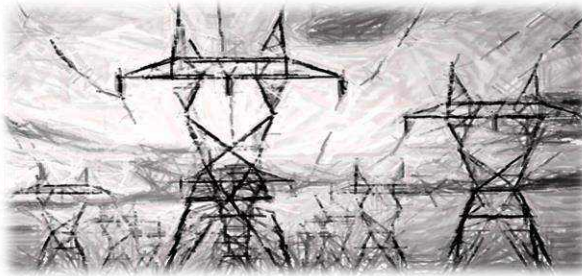
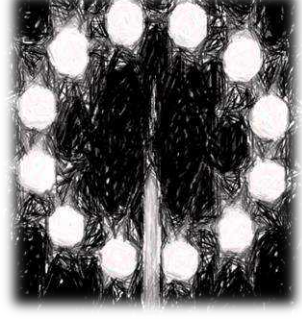
Our staff is technically equipped to assist you about the specifications and technical details of the materials and offers customized solutions.

DEMKA has experience in international market like countries in European ,Middle East, African and Asian markets.

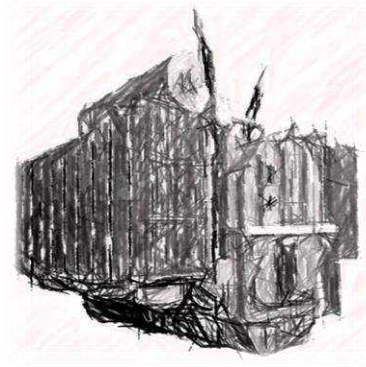
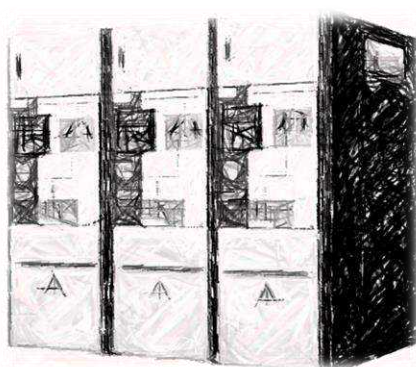
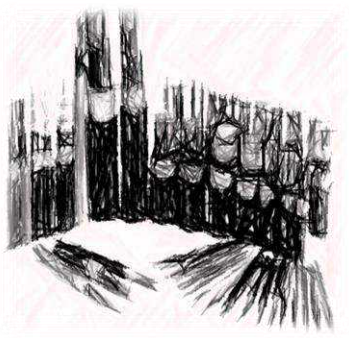
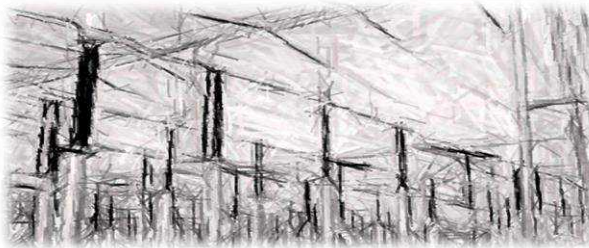
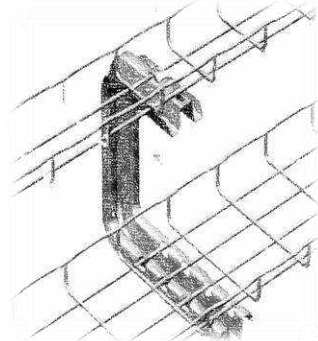
We aim to be your best Supply Channel you have ever worked with....!!

Our company values a customer oriented company culture and pursues the Total Quality Management approach. We understand that Total Quality Management is a team job and all employees, from the top management to the smallest unit,embrace this concept to the fullest

DEMKA adds value for customers through a well-qualified management team as well as professional employees and a strong supplier chain. Our R&D department is continuously working towards the aim of early recognition of customer demand with focus on customer satisfaction.



Products



CABLES

1 - 0,6/1kV Low Voltage Cables:



- * PVC Insulated PVC Sheated , Armoured / Not Armoured Cables with Cu. / Al. Conductor
- * XLPE Insulated PVC Sheated , Armoured / Not Armoured Cables with Cu. / Al. Conductor
- * XLPE Insulated HFFR (LSZH) Sheated , Armoured / Not Armoured Cables with Cu. / Al. Conductor
- * MGT+XLPE Insulated , HFFR (LSZH) Sheated , Armoured / Not Armoured 0,6/1kV Fire Rated Cables with Cu. or Al. Conductor
- * XLPE or PVC Insulated Copper Screened 0,6/1kV Motor Flex - Motor Control Cables with Cu. Conductor
- * XLPE or PVC Insulated , Armoured / Not Armoured Control Cables with Cu. Conductor

2 - Medium Voltage Cables :



- * 1,8/3kV Cables with Cu. / Al. Conductor , Armoured / Not Armoured
- * 3,6/6kV Cables with Cu. / Al. Conductor , Armoured / Not Armoured
- * 6/10kV Cables with Cu. / Al. Conductor , Armoured / Not Armoured
- * 6,35/11kV Cables with Cu. / Al. Conductor , Armoured / Not Armoured
- * 8,7/15kV Cables with Cu. / Al. Conductor , Armoured / Not Armoured
- * 12/20kV MV Cables with Cu. / Al. Conductor , Armoured / Not Armoured
- * 18/30kV MV Cables with Cu. / Al. Conductor , Armoured / Not Armoured
- * 20,3/35kV MV Cables with Cu. / Al. Conductor , Armoured / Not Armoured
- * 26/45kV MV Cables with Cu. / Al. Conductor , Armoured / Not Armoured

3 - Building Wires ,Installation Cables :



- * 450/750V Single Core Cables with Class1 - Class2 - Class5 Cu. Conductor
- * 300/500V Multi Core Cables with Class1 - Class2 - Class5 Cu. Conductor
- * 300/500V Flat Twin and Flat Twin+Earth Cables
- * 300/500V Artic Grade Cables with Class5 Cu. Conductor
- * 300/500V Heat Resistant Cables with Class5 Cu. Conductor
- * 450/750V Multi Core Cables with Class1 - Class2 -Class5 Cu. Conductor
- * 300/500V Multi Core Flat (Elevator) Cables with Class5 Cu. Conductor
- * 450/750V Single Core LSZH (HFFR) Cables
- * 300/500V Multi Core LSZH (HFFR) Cables
- * 300/500V MGT + HFFR Insulated , HFFR (LSZH) Sheated Fire Rated Cables

4 - Overhead Line Cables - Conductors and Accessories:



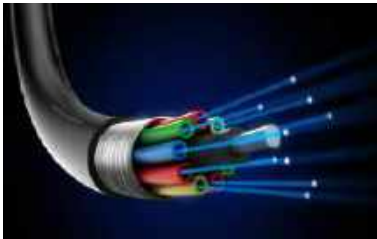
- * ABC (Aerial Bundled) Cables
- * AAC (All Aluminium) Conductors
- * AAAC (All Aluminium Alloy) Conductors
- * ACSR (Aluminium Conductors with Steel Reinforced) Conductors
- * OPGW (Optical Ground Wire) Cables
- * Over Head Line Cable and Conductor Accessories
 - Suspension & Tension Clamps
 - Ball & Socket Couplings

5 - Instrumentation & Control Cables:



- * 300/500V or 600/1000V PVC - XLPE or HFFR Insulated Instrumentation-Control Cables with Individual / Overall Screen
- * 300/500V or 600/1000V PVC - XLPE or HFFR Insulated STA/SWA/GSWB Armoured Instrumentation-Control Cables with Individual / Overall Screen
- * 300/500V or 600/1000V MGT+ XLPE or HFFR Insulated Instrumentation-Control Cables with Individual / Overall Screen
- * 300/500V or 600/1000V MGT+ - XLPE or HFFR Insulated STA/SWA/GSWB Armoured Instrumentation-Control Cables with Individual / Overall Screen
- * 300/500V or 600/1000V Silicone Insulated Instrumentation- Control Cables with Individual / Overall Screen
- * 300/500V or 600/1000V Silicone Insulated SWA/GSWB Armoured Instrumentation-Control Cables with Individual / Overall Screen

6 - Telecommunication & Data Transmission Cables:



- * Indoor Type Telecommunication Cables
- * Outdoor Type Armoured / Not Armoured Telecommunication Cables
- * Direct Burial Armoured / Not Armoured Telecommunication Cables
- * Jelly Filled Armoured / Not Armoured Telecommunication Cables
- * Fiber Optic Cables , Armoured / Not Armoured
- * RS Protocol Cables
- * Bus - Profibus - Fieldbus Cables
- * LAN & CAT Cables

7-Armoured or Not Armoured Fire Resistant Cables:



- * 0,6/1kV MGT+XLPE or HHFR Insulated Fire Resistant Cables
- * 0,6/1kV MGT+XLPE or HHFR Insulated + Cu. Screened Fire Resistant Cables
- * 300/500kV MGT+XLPE or HHFR Insulated Fire Resistant Cables
- * 300/500V or 0,6/1kV 0,6/1kV MGT or Silicone Insulated Fire Resistant Instrumentation / Control Cables
- * 300/500V or 0,6/1kV 0,6/1kV MGT or Silicone Insulated +Cu. Screened Fire Resistant Instrumentation / Control Cables
- * Screened / Un Screened Fire Alarm Cables

7 - Offshore - Marine Cables:



- * PVC , XLPE , EPR or HFFR Insulated , Armoured / Not Armoured 0,6/1kV Offshore/Marine Power Cables .
- * MGT+XLPE , EPR or HFFR Insulated , Armoured / Not Armoured 0,6/1kV Offshore/Marine Power Cables .
- * PVC , XLPE , EPR or HFFR Insulated Cu.Screened Offshore/Marine Power Cables
- * 300/500V or 600/1000V PVC - XLPE or HFFR Insulated Offshore/Marine Instrumentation - Control Cables with / without Individual / Overall Screen
- * 300/500V or 600/1000V PVC - XLPE or HFFR Insulated SWA/GSWB Armoured Offshore/Marine Cables Instrumentation - Control with / without Individual / Overall Screen
- * 300/500V or 600/1000V MGT+ XLPE or HFFR Insulated Offshore/Marine Instrumentation-Control Cables with / without Individual / Overall Screen
- * Mud Resistant Power Cables Acc BS3883 , NEK 606

8 - Mining / Industrial Rubber Cables:



- * 300/500V Rubber Extension Cables
- * 450/750V EPR or G7 Insulated Flex Power Cables
- * 0,6/1kV EPR or G7 Insulated Power Cables
- * 0,6/1kV EPR or G7 Insulated Power Cables with Cu Screen
- * 450/750V EPR/PUR Type Power Cables
- * Railway Cables , Rolling Stock Cables
- * Welding Cables
- * Trailing Cables up to 6/10kV
- * MV Rubber Power Cables
- * MV Mining Cables

9 - And All other Special Cables :



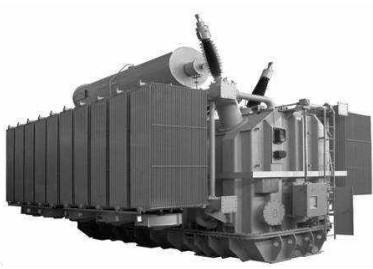
- * Thermocouple Cables
- * Heating Cables
- * Self Regulation Cables
- * Heat Treacing Cables
- * Shore Connection Power Cables
- * Silicone Rubber Insulated Cables for various Heat Temperatures
- * Coaxial , CCTV Cables
- * VFD Cables
- * VSD Cables
- * Airport Lighting Cables , Pilot Cables

Medium Voltage Distribution and Energy Automation



- * Air-Insulated Switchgears
- * Air-Insulated Metal Clad / Metal Enclosed Switchgear
- * SF6 Gas-Insulated Compact / Modular Type Ring Main Units
- * Concrete Enclosed Monoblock Substations
- * Metal Enclosed Monoblock Substations
- * Switch-Disconnecter with SF6 Gas
- * AC Circuit Breaker with SF6 Gas
- * AC Vacuum Circuit Breaker
- * Disconnecter with SF6 Gas
- * Rotary Disconnecter
- * Earthing Switch

Distribution / Power Transformers



- * Single Phase / Three Phase Oil filled transformers between 10-25 kVA
- * Three Phase Distribution Transformers between 25-2500 kVA (Conservator Tank or Hermetic or Box Type)
- * Power Transformers between 2500-25000 kVA
- * Transformers with on load tap changer /automatic voltage regulator under power and voltage
- * Auto transformers
- * Step-up / Step-down Power Transformers for power plant
- * Transformers with electrostatic shielding and transformers for earthing purposes
- * Cast Resin Type Dry Transformers

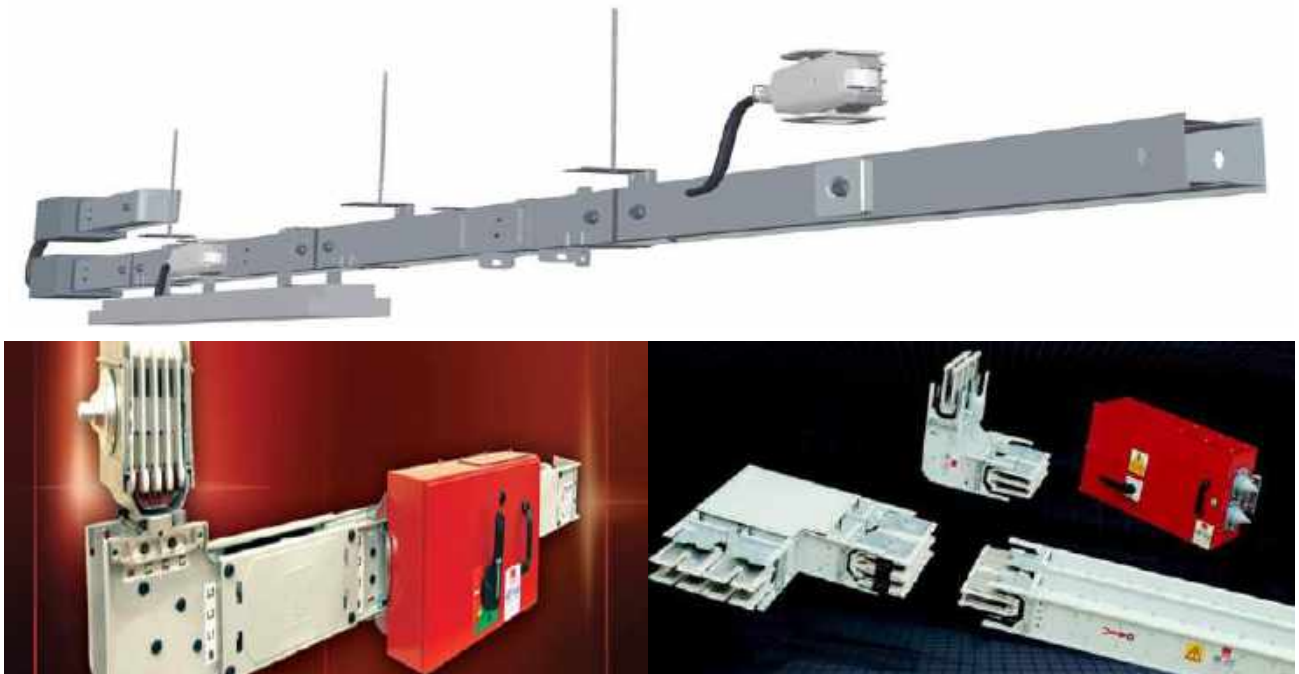
Low Voltage Distribution Systems and Energy Automation



- * Indoor / Outdoor LV Distribution Panelboards
- * Motor Control Centers (MCC) Panelboards
- * Form 4b Withdrawable Panelboards
- * Compansation (Power Factor Correction) Panelboard

- * Lighting System (Street Lighting) Distribution Panelboard
- * Surface/Recessed Type Metal / Plastic Fuse Boxes
- * Industrial Type Automation Panelboard
- * Explosion Proof Special Type Panelboard

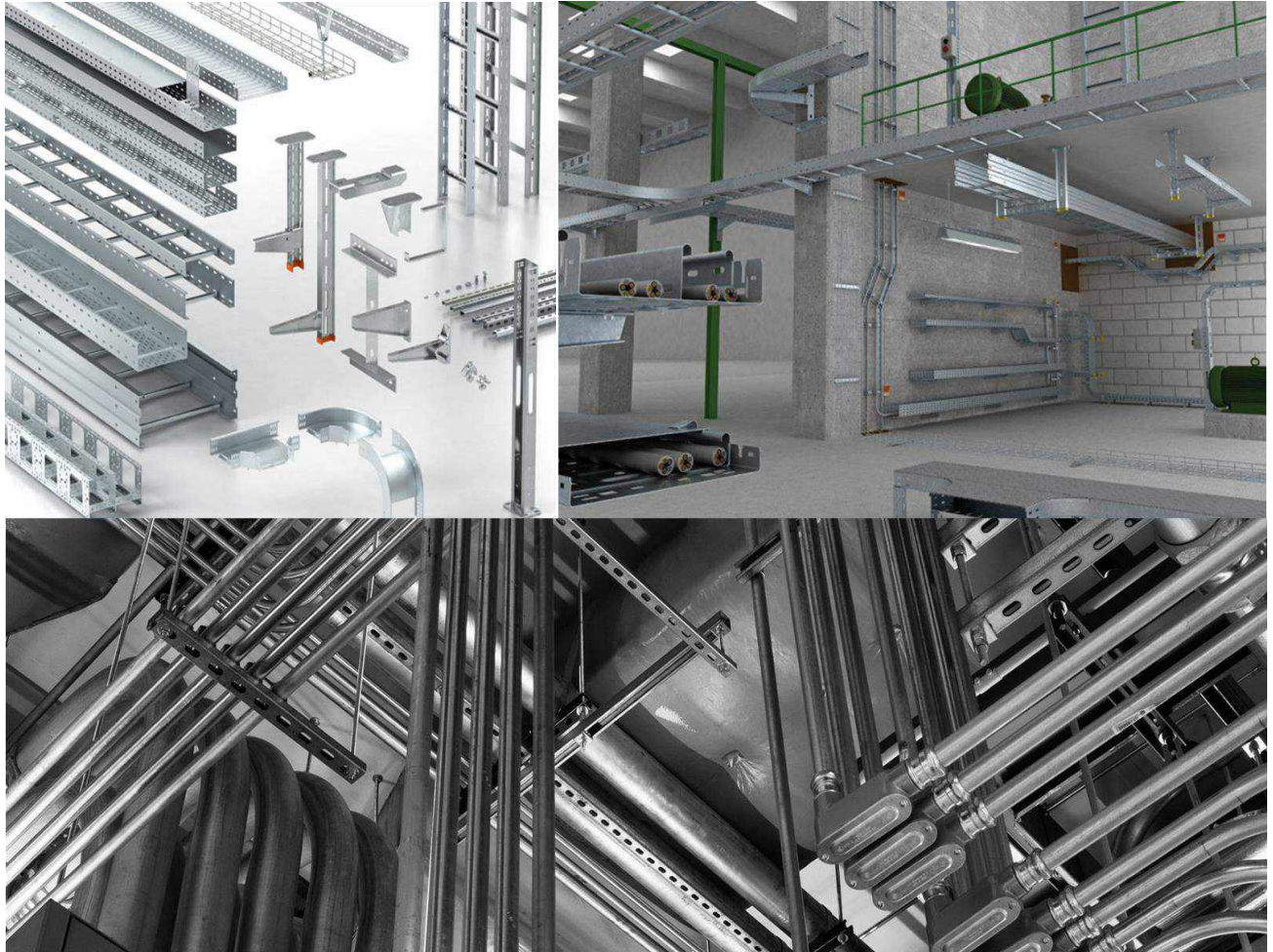
Busbar Power Distribution Systems



- * Lighting Busbar Trunking Systems up to 40A
- * Low Power Busbar Trunking Systems up to 160A
- * Medium Power Busbar Trunking Systems up to 800A
- * Heavy Power Busbar Trunking Systems up to 6300A

- * MV Busbar Trunking Systems and Accessories
- * Tolley Busbar Power Distribution Systems up to 210A
- * Cast Resin Busbar Trunking Systems up to 6300A
- * Uni-Rail Busbar Power Distribution Systems up to 1000A

Cable Trays , Cable Support Systems and Pipes



- * Normal Type Cable Trays and Accessories .
- * Heavy Duty Cable Trays and Accessories .
- * Strengthened Duty Cable Trays and Accessories .
- * Stainless Steel Cable Trays and Accessories .
- * Aluminium Cable Trays -Ladders and Accessories .
- * Normal Type Cable Ladders and Accessories .
- * Heavy Duty Cable Ladders and Accessories .
- * Wire-Mesh Cable Trays (Cable Baskets) and Accessories
- * NPI-80 & NPT-40 Support Systems and Mounting Accessories
- * Bracket Hanging Systems and Accessories
- * C Profile & Unistrut Carrier Systems and Mounting Accessories
- * Screw Sets , Threaded Rods , Fixing Elements , Steel Anchors
- * Cable Cleats (Aluminium , Steel or Vulcan Type)
- * EMT / IMC Cable Conduits and Accessories
- * Metal , PVC PE Flexible Cable Conduits and Accessories
- * Pipe Systems for HVAC and Mounting Accessories
- * Fire Resistant Cable Management Systems

***** Pregalvanising , Hotdipped Galvanizing , Electrostatic Painting or Thermoplastic Coating is options for Cable Trays , Ladders and accessories***

**Overhead Transmission Line Poles , Street Lighting Poles , High Masts
Communication System Towers , Traffic Light Poles ,
Guardrails and Overhead / Cantilever Steel Structures for Highways**



- * Polygonal / Tubular Street Lighting Poles and Mounting Accessories
- * Special Shape Street Lighting Poles and Mounting Accessories
- * Polygonal / Tubular High Masts (Area Lighting Poles) and Mounting Accessories
- * Stadium Poles & Towers and Mounting Accessories
- * Park / Garden Lighting Poles (Steel / Aluminium)
- * Traffic Light Poles and Mounting Accessories
- * Flag and Advertisement Poles and Mounting Accessories
- * Overhad Transmission Poles (For LV , MV and HV Systems) and Mounting Accessories (Lattice, Polygonal or mixed Steel Structures. Bolted or Welded Types)
- * Steel Structures for Substations and Mounting Accessories
- * Communication System Towers (For GSM , FM /TV , Satellite and Radar Antennas) and Mounting Accessories
- * Guardrails Structures for Highways and Mounting Accessories
- * Overhead / Cantilever Steel Structures for Highways and Mounting Accessories

Generators and Accessories



- * Gasoline Generator Sets and Accessories
- * Diesel Generator Sets and Accessories
- * Natural Gas Generator Sets and Accessories
- * Marine Type Generators and Accessories

- * Mobile Lighting Towers
- * Synchronisation Systems for Generator Sets
- * Automatic Transfer Switches for Generator Sets

Lighting Materials

1 - Regular (With Sodium Vapour or Metal Halide Lamp) Street Lighting Luminaires:



- * Aluminium Injection Body Luminaires up to 400W Sodium Vapour or Metal Halide Lamp
- * Polymer Injection Body Luminaires with up to 400W Sodium Vapour or Metal Halide Lamp
- * Anodised Aluminium Body Luminaires with up to 400W Sodium Vapour or Metal Halide Lamp
- * Polyester Body Luminaires with up to 400W Sodium Vapour or Metal Halide Lamp

2 - LED Street Lighting Luminaires:



- * Electrostatic Powder Coated Aluminium Injection Body Luminaires with SMD LED up to 200W
- * Electrostatic Powder Coated Polyester Body Luminaires with SMD LED between up to 200W
- * Diecast Aluminium / Aluminium Extrusion Body Luminaires with SMD LED up to 200W

3 - Floodlights / Projectors :



- * Symmetric Floodlights /Projectors with 70-2000W Sodium Vapour or Metal Halide Lamp
- * Asymmetric Floodlights /Projectors with 70-2000W Sodium Vapour or Metal Halide Lamp
- * Portable Halogen Floodlights /Projectors up to 500W
- * Security Floodlights /Projectors up to 1000W Metal Halide Lamp
- * Stadium Lighting Floodlights /Projectors up to 2000W Metal Halide Lamp
- * SMD LED Floodlights /Projectors up to 500W
- * COB LED Floodlights /Projectors up to 150W

4 - Highbay Luminaires :



- * Electrostatic Powder Coated Metal Sheet Body Highbay with T5 Fluorescent Lamp up to 4x80W
- * Fiber Glass Body Highbay with T5 Fluorescent Lamp up to 2x80W
- * Aluminium Injection Body Highbay with Sodium Vapour or Metal Halide Lamp up to 400W
- * Aluminium Injection Body Highbay with POWER LED up to 180W
- * Aluminium Injection Body Highbay with COB LED up to 144W

5 - Waterproof Luminaires :



- * Electrostatic Powder Coated Metal Sheet Body Waterproof Luminaires with T5 Fluorescent Lamp up to 2x35W
- * Electrostatic Powder Coated Metal Sheet Body Waterproof Luminaires with T8 Fluorescent Lamp up to 2x58W
- * Polycarbonate Injection Body Waterproof Luminaires with T5 Fluorescent Lamp up to 2x35W
- * Polycarbonate Injection Body Waterproof Luminaires with T8 Fluorescent Lamp up to 2x58W
- * Fiber Glass Body Waterproof Luminaires with T8 Fluorescent Lamp up to 2x58W
- * Antigron Waterproof Luminaires with T8 Fluorescent Lamp up to 2x18W
- * Aluminium Injection Body Waterproof Luminaires with POWER LED up to 42W
- * GRP Aluminium Body Waterproof Luminaires with SMD LED up to 42W
- * Diecast Aluminium Body Waterproof Luminaires with SMD LED up to 70W
- * Fiber Glass Body Waterproof Luminaires with LED TUBE up to 2x24W

6 - Batten Luminaires :



- * Recessed / Surface Type Batten Luminaires with 14W-80W TL5 Fluorescent Lamp
- * TMS Standard Type Batten Luminaires with 18W-58W TL-D Fluorescent Lamp
- * Click-In TMS Standard Type Batten Luminaires with 18W-58W TL-D Fluorescent Lamp
- * T8 Type Batten Luminaires with IP65 Lampholders 18W-58W T8 Fluorescent Lamp
- * T5 Type Batten Luminaires with IP65 Lampholders 14W-35W T8 Fluorescent Lamp
- * Market / Supermarket Type Batten Luminaires with 18W-58W TL-D Fluorescent Lamp
- * T1 Plexiglass Batten Luminaires with 18W-36W TL-D Fluorescent Lamp
- * School Type Batten Luminaires with 18W-36W TL-D Fluorescent Lamp
- * Plex Batten Luminaires with 18W-36W TL-D or 14W-28W T5 Fluorescent Lamp
- * Plex Batten Luminaires with 18W-36W TL-D or 14W-28W T5 Fluorescent Lamp
- * SMD LED Batten Luminaires up to 14W
- * LED TUBE Batten Luminaires up to 24W
- * POWER LED Batten Luminaires up to 22,7W

7 - Canopy Luminaires :



- * Recessed Monobloc Aluminium Body Canopy Luminaires with Metal Halide Lamp 70W-400W
- * Recessed Rectangular Coated Metal Body Canopy Luminaires with Metal Halide Lamp 150W-400W
- * Surface Mounted Monobloc Aluminium Body Canopy Luminaires with Metal Halide Lamp 70W-400W
- * Recessed Square Coated Metal Body Canopy Luminaires with Metal Halide Lamp 70W-400W
- * Surface Mounted Square Painted Metal Body Canopy Luminaires with Metal Halide Lamp 70W-400W
- * Recessed Monobloc Aluminium Body Canopy Luminaires with LED 36W
- * Recessed Coated Aluminium Injection Body Canopy Luminaires with Power LED 64W

8 - Park and Garden Luminaires :



- * Park and Garden Poles
- * Park-Garden Luminaires Sets
- * LED Park-Garden Luminaires Sets
- * Underrain and Pool Luminaires

- * Outdoor Appliques
- * Wall Top - Grass Luminaires
- * Recessed Wall - Floor Luminaires

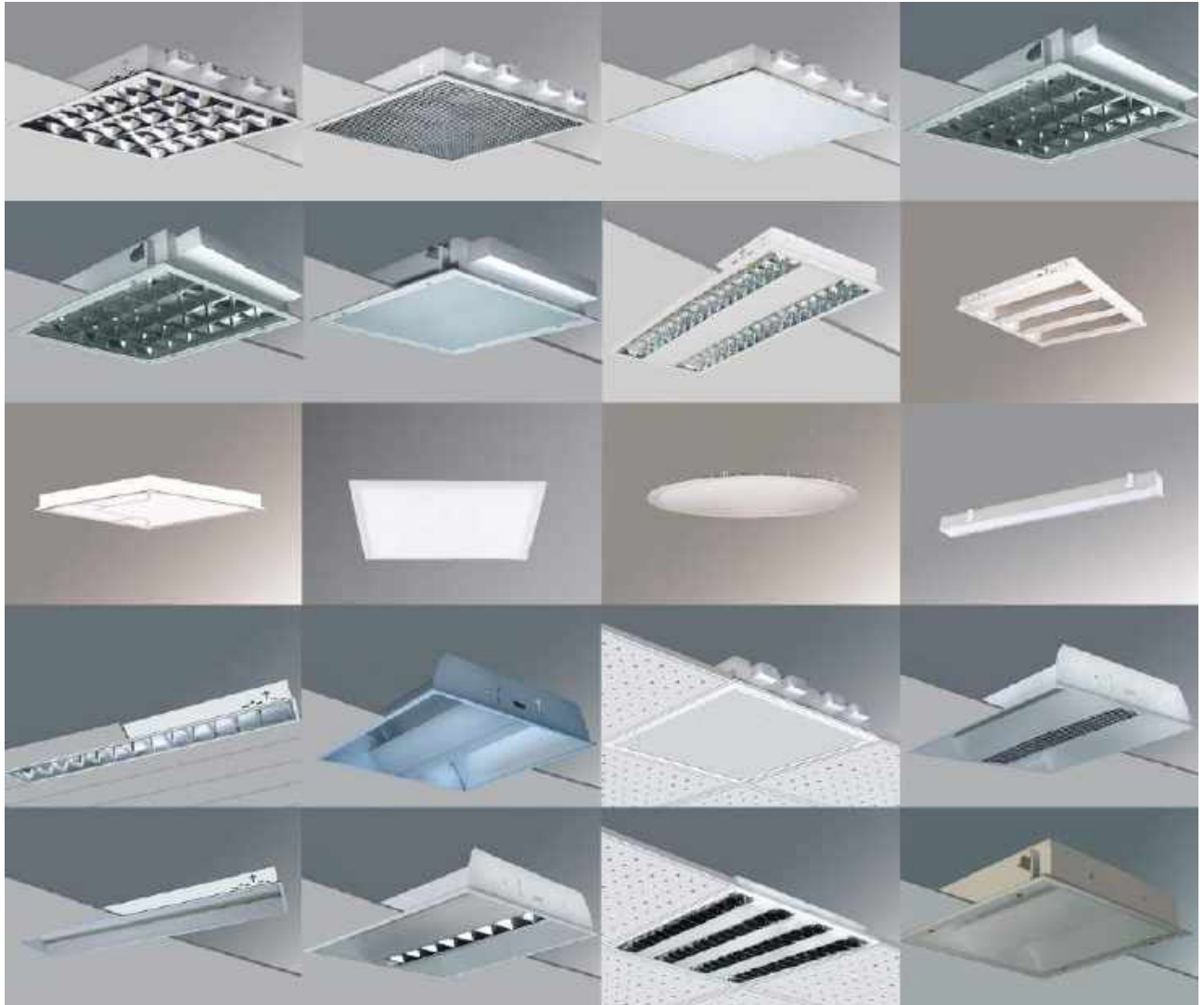
9 - Emergency Luminaires :



- * IP65 Emergency Luminaires with T5 Lamp
- * IP65 SMD LED Emergency Luminaires
- * IP20 2x16W or 4x18W Emergency Luminaires
- * Spot Emergency Luminaires
- * LED Emergency Lanterns
- * LED Spot Emergency Luminaires

- * Profile Emergency Exit Luminaires
- * Wall Type - Ceiling Type Emergency Exit Luminaires
- * Exiled Emergency Exit Luminaires
- * Via LED / Plexi LED Emergency Exit Luminaires
- * Direction Legends

10 - Recessed Mounted Office Luminaires :



- * 7 / 9 Lamella Double Parabolic Luminaires
- * 9 Lamella Matt Parabolic Luminaires
- * Mash Louver Cellular Luminaires
- * Prismatic Lens Luminaires
- * Opal Lens Luminaires
- * IP65-Sandblasted Glass Luminaires
- * IP65 Tempered Glass Parabolic Luminaires
- * T8 Isolamp Luminaires
- * T5 Lampel Luminaires
- * T5 Isolamp Luminaires
- * Frosted Lens Luminaires
- * T5 Isolamp Opal Luminaires
- * T5 Luxlamp Luminaires
- * LED Panel Luminaires
- * LED Luminaires
- * Isoled Panel Luminaires
- * Slim LED Panel Luminaires (Drywall Ceiling)

- * Ceiling Luminaires (85 mm-150mm-185mm-250mm)
- * Clip-in Parabolic Luminaires
- * Clip-in Lens Luminaires
- * Clip-in Perfored Indirect Luminaires
- * Clip-in T5 Luminaires
- * Slim LED Clip-in Panel Luminaires (Drywall Ceiling)
- * Perforated Indirect Luminaires
- * Indirect Parabolic Luminaires
- * Indirect Louver Luminaires
- * Indirect Tannenbaum Luminaires
- * Asymmetric Indirect Luminaires
- * Indirect Sterile Luminaires
- * Clean Room Luminaires
- * SMD Mid Power LED Luminaires
- * SMDLED Circular Luminaires
- * Linear Luminaires (85 mm / 57mm)
- * Parlamp Luminaires

11 - Surface Mounted Office Luminaires :



- * 7 Lamella Double Parabolic Luminaires
- * T8 Luminaires
- * T5 Luminaires
- * Prismatic Luminaires
- * Mash Louver Parabolic Luminaires
- * Opal Lens Luminaires
- * IP65 Sandblasted Glass Luminaires
- * IP65 Tempered Glass Parabolic Luminaires
- * Perforated Indirect Luminaires
- * Parabolic Indirect Luminaires
- * Louver Indirect Luminaires
- * Indirect Luminaires
- * Perforated Indirect Luminaires

- * Oval Luminaires and Accessories
- * T5 Luminaires With Glass
- * Square Luminaires With Glass
- * Pendant Luminaires
- * T5 Luxlamp Luminaires
- * Parlamp Luminaires
- * LED Panel Luminaires
- * LED Luminaires
- * LED Luminaires
- * Clean Room Luminaires
- * Ultraviolet Luminaires
- * Negatoscope
- * Negatoscope LED

12 - Downlight Luminaires :

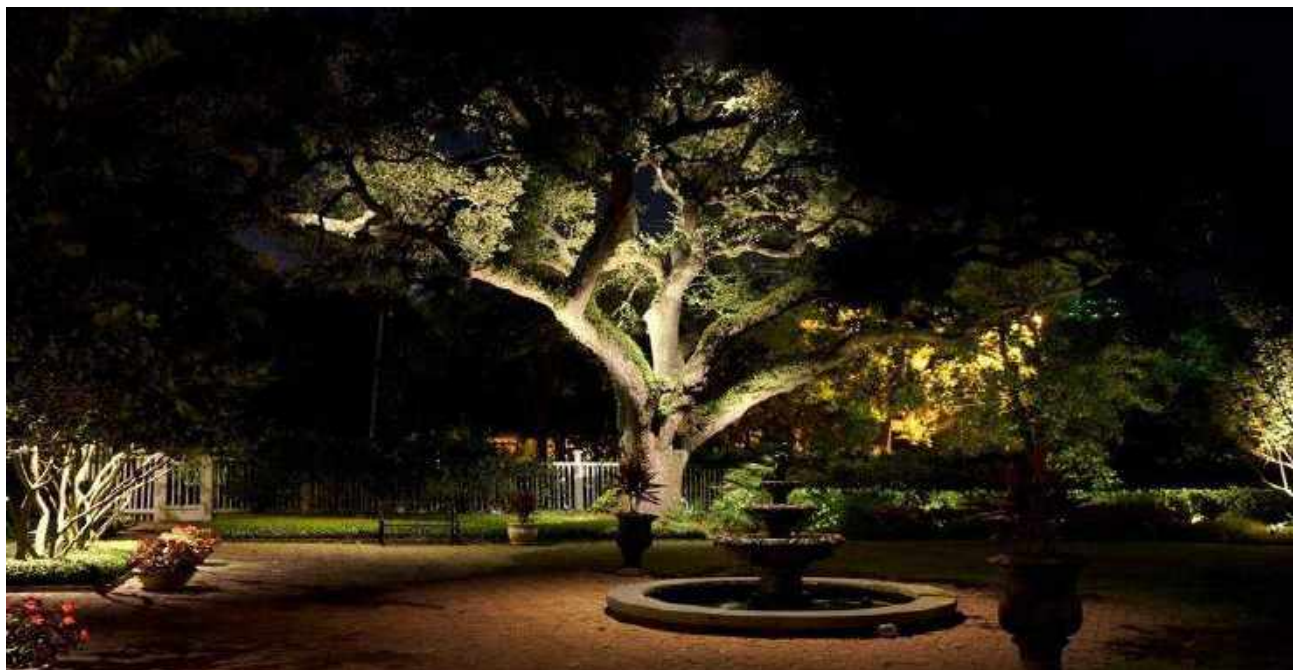


- * Recessed Mounted Vertical Downlight Luminaires with / without Glass
- * Recessed Mounted Horizontal Downlight Luminaires with / without Glass
- * Recessed Mounted Turbo Downlight Luminaires with / without Glass
- * Recessed Mounted Square Showcase Downlight Luminaires
- * Surface Mounted Vertical Downlight Luminaires with / without Glass
- * Surface Mounted Horizontal Downlight Luminaires with / without Glass
- * Surface Mounted Oval Downlight With Glass Luminaires with / without Glass
- * Surface Mounted Downlight with Glass Luminaires
- * Recessed Mounted Slim LED Downlight Luminaires
- * Recessed Mounted SMD LED Square Downlight Luminaires
- * Recessed Mounted SMD LED Circular Downlight Luminaires
- * Recessed Mounted COB LED Circular Downlight Luminaires
- * Surface Mounted COB LED Circular Downlight Luminaires
- * Surface Mounted SMD LED Circular Downlight Luminaires

13 - Spots :



- * Single Source Halogen Spots
- * Square Halogen Spots
- * Recessed Halopar Spots
- * Recessed Halospot Spots
- * Recessed Square Spots with / without Glass
- * Halogen Spots
- * R 50-63-80 Spots
- * Surface Mounted PAR Spots
- * Surface Mounted Showcase Spots
- * Recessed Mounted Square Display Spots
- * Surface Mounted Reflector Spots
- * Sole LED Spots
- * COB LED Spots
- * LED Spots



Earthing - Lightning & Thermo Welding Materials



- * Active Paratoners and All Mounting Materials
- * Lightning Arresters and All Mounting Materials
- * Conductor Fixing Clamps
- * Equal Potential Bars
- * Copper or Galvanized Steel Earthing Electrodes
- * Earthing Electrodes (Rods) Fixing Accessories
- * Steel Wire Rop
- * Earth Plate - Lattice Copper
- * Brass Fixing Clamps
- * Non Insulated Cu./Al. Earthing Conductors
- * Insulated Cu. / Al. Earthing Conductors
- * Static Electric Earthing Sockets/receptacles
- * Gross Protections
- * Lightning Current Protections Switchboards

- * Galvanized Mono Steel Wires-Sheet
- * Insulated/Non Insulated Cu. / Al. Earthing Tapes and accessories
- * Galvanized Earthing Tapes and accessories
- * Fixing Clamps
- * Brass Connectors for Soldering
- * Flat Bar Connectors
- * Ground Enhancement Material
- * Earthing Pits
- * Pipes , Pipe Clamps , U Bolts and other accessories
- * Flexible Bars
- * Electric Earthing Sockets
- * Thermoweld Cups , Powder , Scraper
- * Thermoweld Pliers , Brush , Lighter , etc.

HV - MV Disconnectors , MV Switch - Disconnectors , Disconnectors' Fuses , Insulators .



- * H.V Centre Break Disconnectors
- * H.V Pantograph Disconnectors
- * H.V Horizontal Break Pantograph Disconnectors (Knee Type)
- * H.V Earthing Switches
- * H.V Current Limiting Back-Up Fuses
- * H.V Indoor/Outdoor Fuse Bases
- * H.V Disconnector Operating Mechanisms
- * M.V Indoor Rocking Disconnector
- * M.V Outdoor Rocking Disconnector
- * M.V Centre Break Disconnectors
- * M.V Double Break Disconnectors
- * M.V Indoor Earthing Switches
- * M.V Outdoor Earthing Switches
- * DC Disconnectors for Railway Applications and Operating Mechanisms

- * M.V Quick Make Earthing Switches
- * M.V Disconnector / Earthing Switches Mechanisms
- * M.V Indoor Switch Disconnector fuse combinations
- * Porcelain Housed Surge Arresters
- * Porcelain Pin Type Insulators
- * Porcelain String Insulators
- * Porcelain Line Post Insulators
- * Transformer Bushings
- * Wall Bushings
- * Hollow Insulators (Capacitive Voltage Transformer Bushings)
- * Outdoor Post Insulators
- * Indoor Post Insulators
- * High Voltage Post Insulators
- * M.V Polymeric Housed Metal Oxide Surge Arresters
- * M.V Polymer Insulator

Ex-Proof Electrical Materials



- * Junction Boxes
- * Control Stations
- * Limit Switches
- * Electric Switches
- * Fluorescent Lighting Fixtures
- * LED Lighting Fixtures
- * Emergency Fluorescent Lighting Fixtures
- * Incandescent Lighting Fixtures
- * Ballasted Lighting Fixtures
- * Floodlights
- * Incandescent Lighting Fixtures

- * Warning Beacons
- * Telephone Set
- * Grounding System And Clamp
- * Cable Glands
- * Plugs
- * Reducers
- * Nippel And Muffs
- * Stainless Steel Flexible Conduit
- * Conduit Unions , Seals and Sealing Compounds
- * Pipe Clips

Industrial Switches , Sockets and Combination Boxes



- * Monophase / Three-Phase Plug-in Plug-Sockets
- * CEE Norm Plug-Sockets
- * Flat Plug-Sockets
- * Arc Welding Plug-Sockets
- * Heavy Duty Connectors
- * CEE group Plug-Socket
- * CEE Poly Boxes
- * V5-V10-V17-V24 Combination Boxes

- * Metal Cable Reels
- * PVC Cable Reels
- * Hand Lamps
- * Transformer Lighting
- * Botton Boxes
- * Fuse Boxes
- * Switch Boxes
- * Energy Transfer Systems

PVC Cable Trunkings & Accessories , PVC / Metal Electrical Conduits & Accessories Switches , Sockets , Group Sockets



- * Self Adhesive Cable Trunkings and Assembly Sets outlets
- * Halogenfree / Self-Extinguishing Conduits and Fittings
- * Boxes / Cases
- * EMT Conduits And Fittings
- * IMC / RSC Conduits And Fittings
- * Flexible Conduits And Fittings
- * PVC / Poliamide and PP Flexible Conduits and Fittings
- * Air Ducts
- * PVC Profiles
- * External Cable Trunkings and Assembly Sets Outlets
- * Inside Cover Cable Trunkings and Assembly Sets Outlets
- * Kicking Cable Trunking and Accessories
- * Ground Cable Trunking and Accessories
- * Blue/Grey Slotted Trunking
- * Halogenfree Cable Trunkings and Assembly Sets Outlets
- * British Type Assembly Sets for Cable Trunkings Outlets
- * Surface & Flush Mounted Fuse Boxes
- * Group Sockets with without Extension Cord and Plugs

- * Single Pole / Double Poles Switches
- * Dual Switches - Two Pole Switches - Commutators
- * Triple Switches
- * Push Button Switches
- * Two Way Switches - Double Two Way Switches
- * Reversing Switches
- * Shutter Push Button Switches - Shutter Push One Button Switches
- * Door/Doorbell Push Button Switches
- * Socket Outlets - Earted Socket Outlets - Earted Socket Outlets with UPS
- * Double Socket Outlets - Double Earted Socket Outlets - Double Earted Socket Outlets with UPS
- * TV Socket Outlets - TV/Satelite Socket Outlets
- * Telephone Socket Outlets
- * Data Socket Outlets
- * Rotary Dimmer
- * All Type and Series Surface Mounted Switches & Sockets
- * All Type and Series Waterproof Switches & Sockets

LV - MV Cable Joints , Cable Termination Kits Cables Accessories



- * Resin Cable Joints for LV Cables ; Straight Type , T Type and Y Types
- * Heat Shrinkable Cable Joints for Cu. / Al. LV Cables
- * LV Cables Repairing Kit
- * Resin Cable Terminations for Single or Multicore LV Cables
- * Heat Shrinkable Cable Terminations for LV Cables
- * Resin Cable Cable Joints for Single Core or Three Cores MV Cables
- * Heat Shrinkable Cable Joints for Single Core or Three Cores MV Cables
- * Heat Shrinkable Cable Terminations for Single or Multicore MV Cables
- * T Type , L Type Cable Terminations for MV Cables
- * Heat Shrinkable Tubes
- * Polyamide , Brass , Nickel Plated Brass , Stainles Steel and Special Type Cable Glands
- * Cable Lugs
- * Cable Ferrules
- * Cable Markers
- * PVC , Stainles Steel Cable Ties
- * Mechanical / Hydraulic Cable Cutting Machines
- * Cable Cleats
- * Strip Terminal , Euro Terminals
- * Cable Warning Tapes
- * Electrical Tape
- * PVC/Aluminium/Waterproof Junction Box
- * Cable Clamps
- * All other cable Accessories

Electric Power Distribution Materials & Equipment



- * MCCB's (Molded Case Circuit Breaker) and Accessories
- * MCB's (Miniature Circuit Breakers) and Accessories
- * ACB (Air Circuit Breakers) and Accessories
- * ATS (Automatic Transfer Switches) and Accessories
- * Magnetic and Thermal Magnetic Motor Circuit Breakers and Accessories
- * Switch Disconnectors and Accessories
- * Motor Starters and Accessories - Motor Protection Breakers
- * Panel & DIN-Rail mounted Modular Selector Switches
- * Pushbuttons, Switches, Pilot Lights, Control stations & Joysticks
- * Contactors & Protection Relays and Accessories
- * Vertical - Horizontal Switch Disconnecter
- * NH (Knife) Type Fuses and Accessories
- * Terminal Blocks and Bars
- * Modular Beacons and Tower Lights
- * UPS Systems
- * Residual Current Circuit Breakers (RCB)
- * Leakage Case Circuit Breakers
- * Energy Meters , Energy Analysers
- * Compensation Materials & Equipment
- * Voltage Regulators
- * Harmonic Filters , Frequency Convertors , Invertors
- * LV Panel Parafudr Surge Arrestors
- * PLC and Authomation Relays

SOME OF MAJOR REFERENCES

UN - PROJECTS AT CHAD, IVORY COAST, LIBERIA, SUDAN, GEORGIA, SYRIA, LEBANON	LV-MV Cables, Instrumentation-Data-Telecommunication Cables, Lighting Fittings, Cable Trunkings, Various Type Switches, Distribution Panels and Electrical Materials
MONUSCO - UGANDA	Complete set MCCB, Power Cables, Emergency Button & DC Breakers
MINUSTAH - HAITI	Power Distribution Panels and Electrical Materials
D S CONSTRUCTION - LIBYA	Street Lighting Poles, RM6 Ring Main Unit, Fire Alarm & Telephone Cables, Diesel Generator Set
MINISTRY OF OIL SOUTH - MAKINA HOSPITAL PROJECT - IRAQ	MV Cables
S.C.C GUARARA PROJECT - NIGERIA	Street Light Pillars
KARACHAGANAK RAFINARY - KAZAKHSTAN	Cables & Galvanised Steel Pipes
AL-QUDUS EXPANSION PROJECT - IRAQ	Indoor Lighting and Electrical services & accessories, Lighting Poles, Floodlights, Street Luminaires, Lighting Arrestors, Distribution Panels
AL-MANSURYA GAS TURBINE POWER PLANT PROJECT - IRAQ	LV and Control Cables
TANMIYA STEEL FACTORY - IRAQ	Heavy Duty Cable Ladders, Support System, Cable Trays, Electrical Equipments, Lighting Materials
AL QATRANA POWER PROJECT - JORDAN	Instrumentation & Aluminium Cables
SAMRA WASTE WATER TREATMENT PLANT PROJECT - JORDAN	Power & Instrumentation Cables
OXY - SULTANATE OF OMAN	Instrumentation Cables
S.C."TURKMENGAS" PROJECT - TURKMENISTAN	Earthing Systems, Distribution Panels, Lighting Materials, Pipes&Tubes, Radio Towers, Cable Trays, Compensation Panels, Mast, Lights&Towers, Power-Control-Fire Alarm-Underground Telephone- Data-Transmission Cables
KSS - KAZAKHSTAN	Silicone Insulated LV - M.V., Control - Instrumentation, Data and Coaxial Cables
MOE - GAS POWER PLANT PROJECT - IRAQ	LV Cables, Earthing Materials, Conduit & Accessories
MOE - NAJAF POWER PLANT PROJECT - IRAQ	Instrumentation & Power Cables, Cable Trays, Ladders & Accessories.
MOE - NEW AL NAJAF GAS TURBINE POWER PLANT , MANSURIYA POWER PLANT PROJECT - IRAQ	Lighting Poles , Earthing Materials & LV Cables
MOE - AL -RASHEED GT POWER PLANT PROJECT - IRAQ	Street Lighting Poles & Floodlights, LV Cables, Bare Copper Conductor & ACSR
MOE - HILLA & KARBALA PROJECTS - IRAQ	Earthing Materials & Cables
MOE - BUZURGAN GAS POWER PLANT PROJECT - IRAQ	Cables, Street Lighting Poles with Lighting Fixtures & Floodlights

DEMKA DIS TICARET ve PAZARLAMA A.S

Barbaros Mh. Begonya Sk .NidaKule Atasehir Kuzey 3A Kat : 21 No:184 34746 B.Atasehir/Istanbul, TURKIYE

Tel: +90 216 5921616 **Fax:** +90 216 5921626 **E-mail:** demka@demkaexport.com **Web:** www.demkaexport.com

SOME OF MAJOR REFERENCES

BASRA STEEL FACTORY PROJECT - IRAQ	LV Cables, Cable Terminations & Cable joints
MINISTRY OF WATER RESOURCES - JICA PROJECT - IRAQ	Cables & Wires
DRAGON OIL REFINERY PROJECTS- TURKMENISTAN	Cathodic Protection, Lighting Panels&Materials, Cables (Instrumentation, LV-MV, Power&Control, Rubber, Fiber Optic, Data- Transmission)LV Switchboard, Distribution Panels, Test Station, HDG Cable Trays & Accessories
USAID DARUNTA HYDRO POWER PLANT PROJECT - AFGHANISTAN	Cable Trays & Accessories
MINISTRY OF MUNICIPALITIES - GENERAL DIRECTORATE FOR WATER / AL- HINDIYA PROJECT - IRAQ	Lighting Poles & Fittings
MOE FERTILIZE GAS POWER PLANT PROJECTS - BASRA IRAQ	Thermocouple Cables
SOHAR 2 IPP & BARKA 3 IPP PROJECTS - SULTANATE OF OMAN	Instrumentation Cables
SULAYMANIYAH UNIVERSITY PROJECT - IRAQ	Lightning Materials
MINISTRY OF OIL (SOC) ZUBIAR OIL FIELD DEVELOPMENT PROJECTS - IRAQ	Electrical Consumables Galvanized steel flexible, PVC Conduits & EMT Conduits
CS YULEEVKA PROJECT - UKRAINE	Power & Instrumentation Cables
SICHUAN ROAD & BRIDGE - ERITREA	LV Cables
HASSOUNEH GROUP MELTSHOP PLANT - JORDAN	LV & MV Cables and Cable Accessories
LLC "KARPATYGAZ" KIEV - UKRAINE	Electrical Spare Parts
VRA (VOLTA RIVER AUTHORITY) - GHANA	0,6/1kV Aluminium Cables, Bare Copper Conductors
ALMATY METRO PROJECTS - KAZAKHSTAN	MV Cables
NOC (NORTH OIL COMPANY) KIRKUK - IRAQ	3,6/6kV Cables
AL ZAWRAA, AL HAWAISH, AL NEDAA, HILLA WEST Projects - IRAQ	Earthing Materials, Earthing Cables, Cables Accessories, ACSR Conductors, Cable Ladder & Accessories.
TAWKE Projects Material Zakho District - IRAQ	Lightning Protection Tower 30m, Earthing Materials and Lightning Mast, Cables and Ex-Proof Cable Glands.
STAROIL - SUDAN	Power Supply Skid 250KVA Substations
SUFYAN EPF PROJECT - SUDAN	RMU, LV Switch Gear, MCC Panel
PETRONAS CARIGALI SDN BHD - TURKMENISTAN	Instrumentation Cables
HYUNDAI ENGINEERING CO. LTD. QUDUS GAS TURBINES POWER PLANT PROJECTS - IRAQ	Grounding Conductors, Power and Control Cables
BOUYGUES TURKMEN MEF PROJECT - TURKMENISTAN	LV Cables
OMV EXPLORATION & PRODUCTION - YEMEN	Instrumentation Cables
KCML KERBALA CEMENT MANUFACTURING- IRAQ	LV & MV Cables, Control Cables, Battery Charges, Heat Shrinkable Cable Terminations

DEMKA DIS TICARET ve PAZARLAMA A.S

Barbaros Mh. Begonya Sk .NidaKule Atasehir Kuzey 3A Kat : 21 No:184 34746 B.Atasehir/Istanbul, TURKIYE

Tel: +90 216 5921616 **Fax:** +90 216 5921626 **E-mail:** demka@demkaexport.com **Web:** www.demkaexport.com