

## LIGHTING FIXTURES & ACCESSORIES

### - INDOOR LIGHTING

- Recessed Mounted Lighting
- Surface Mounted Lighting
- Downlight / Spotlight
- Ceiling Lighting
- Emergency Lighting

### - OUTDOOR LIGHTING

- Floodlights
- Road & Street Lightings
- Park & Garden Lightings

### - INDUSTRIAL LIGHTING

- Highbay Luminaire
- Waterproof Luminaire
- Batten Luminaire
- Canopy Luminaire

### - EX-PROOF LIGHTING

- Ex-proof Luminaire
- Ex-proof Floodlight
- Ex-proof Highbay Luminaire
- Ex-proof Canopy Luminaire
- Ex-proof Spotlight
- Ex-proof Portable Lighting Fixtures
- Ex-proof Emergency, Warning and Signal Lighting



# INDOOR LIGHTING

## Content of Indoor Lighting

### Recessed Luminaire

- 7 Lamella Double Parabolic
- 9 Lamella Double Parabolic
- 9 Lamella Matte Double Parabolic
- Prismatic Lens Luminaire
- Opal Lens Luminaire
- UV-C Office Luminaire
- UV-C Sterile IP65 Luminaire
- Backlight Panel
- Mesh Louver Luminaire
- Panel Luminaire
- IP54 LED Sterile
- Slim LED Panel Luminaire
- Metal Suspended Ceiling Slim LED Panel Luminaire
- Drywall Ceiling Slim LED Panel Luminaire
- IP65 Tempered Glass Sterile Luminaire
- IP65 Tempered Glass Sterile Indirect Luminaire
- IP65 Sandblasted Glass Sterile Luminaire
- Indirect Parabolic Luminaire
- Indirect Louver Luminaire
- Perforated Indirect Luminaire
- Lamella Ceiling Luminaire
- Decorative Luminaire
- Linear Luminaire

### Surface Mounted Luminaire

- 7 Lamella Double Parabolic Luminaire
- Prismatic Lens Luminaire
- Mesh Louver Luminaire
- Backlight Panel
- Panel Luminaire
- IP65 LED Sterile
- Perforated Indirect Luminaire
- Parabolic Perforated Indirect Luminaire
- Mesh Louver Indirect Luminaire
- IP65 Tempered Glass Parabolic Luminaire
- IP65 Sandblasted Glass Luminaire
- Negatoscope Luminaire
- Ultraviolet Luminaire
- Slim square Luminaire with Glass
- Decorative Luminaires
- UV-C Hangable/Portable Luminaire
- Slim LED Panel Pendant Luminaire
- Pendant Luminaire
- Linear Luminaire

### Downlight/Spotlight

- Horizontal Downlight
- Vertical Downlight
- Aluminium Injection
- Inner Diffuser
- Flat Diffuser
- Recessed Mounted Downlight with Glass
- COB LED Downlight
- Slim LED Panel Downlight
- Surface Mounted Horizontal Downlight
- Surface Mounted Oval Downlight
- Surface Mounted Downlight with Glass
- Surface Mounted COB LED Downlight
- Surface Mounted Square Downlight with Glass
- Surface Mounted Spotlight
- Recessed Mounted Spotlight
- Track Spot Luminaire

### Ceiling Luminaire

- LED Ceiling Luminaire
- 32W Ceiling Luminaire
- Globe Luminaire
- Globe Luminaire with Sensor
- LED with Sensor

### Emergency Luminaire

- Emergency Spots
- Emergency LED Spots
- LED Lanterns
- Emergency Exit Luminaire
- Direction Legends

## RECESSED MOUNTED INDOOR LIGHTING



### TECHNICAL DATA

**Luminaire Body:** Sheet Metal, Aluminium, Aluminium Extrusion

**Luminaire Optic:** Opal Diffuser

**Led Type:** Mid Power LED

**Power(W):** From 8W up to 40W

**Mains Voltage(V):** From 220-240V

**Colour Temperature(K):** 3000-6500K

**IP Protection:** IP20 - IP40 - IP65

**Working Temperature(°C):** From -20°C up to +50°C

**Body Colour:** Ral 9003

\* Other colours can be produced upon the customer's requests.

\* DALI, SwitchDIM and Emergency options can be produced upon the customer's requests.

### INTRODUCTION

Recessed lighting positions a light source inside a wall, ceiling, or floor, projecting the light beam outward. Recessed and surface mounted lighting is an useful and modest light source that rests snugly against the ceilings. For filling parts of the rooms with modest light sources, they are the most adjustable and versatile lighting.

### APPLICATION

- Offices
- Educational Facilities
- Foyers
- Shopping Malls
- Hospital and Wellness





7 Lamella Double Parabolic



9 Lamella Double Parabolic



9 Lamella Matte Double Parabolic



Prismatic Lens Luminaire



Opal Lens Luminaire



UV-C Office Luminaire



UV-C Sterile IP65 Luminaire



Backlight Panel



Ambiance Panel Series



Panel Luminaire



IP-54 Panel Sterile



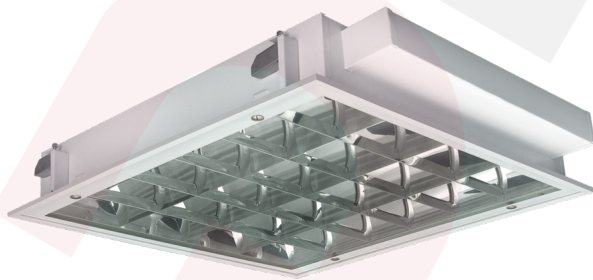
Slim LED Panel Luminaire



Metal Suspended Ceiling Slim LED Panel Luminaire



Drywall Ceiling Slim LED Panel Luminaire



IP65 Tempered Glass Sterile Luminaire



IP65 Tempered Glass Sterile Indirect Luminaire



**IP65 Sandblasted Glass Sterile Luminaire**



**Indirect Parabolic Luminaire**



**Indirect Louver Luminaire**



**Perforated Indirect Luminaire**



**Linear Luminaire**

## SURFACE MOUNTED INDOOR LIGHTING



### TECHNICAL DATA

**Luminaire Body:** Sheet Metal, Aluminium, Aluminium Extrusion

**Luminaire Optic:** Opal Diffuser

**Led Type:** Mid Power LED

**Power(W):** From 8W up to 80W

**Mains Voltage(V):** From 220-240V

**Colour Temperature(K):** 3000-6500K

**IP Protection:** IP20 - IP40 - IP65

**Working Temperature(°C):** From -20°C up to +50°C

**Body Colour:** Ral 9003

\* Other colours can be produced upon the customer's requests.

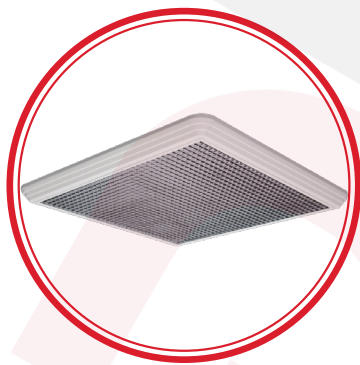
\* DALI, SwitchDIM and Emergency options can be produced upon the customer's requests.

### INTRODUCTION

A surface-mounted light is one that stands on top of a flat surface, such as a ceiling, and protrudes away from it. Ceiling mounts are surface mounts that are specially attached to the ceiling. A static fixture or a chain can be used to attach some surface mount lights in industrial lighting to the ceiling. This sort of lighting comes in a variety of shapes and sizes, and it's perfect for situations where there's not a lot of space between the structural ceiling and the drop down ceiling, or when the ceiling is exposed. Recessed lighting is difficult or impossible to install in certain scenarios. These light mounts can also be placed with little to no modification to the surface on which they are attached.

### APPLICATION

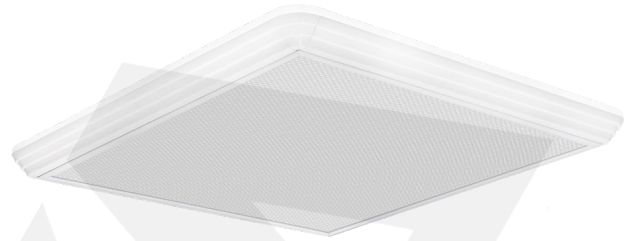
- Offices
- Conference Rooms
- Shopping Malls
- Hospitals
- Educational Facilities
- Foyers
- Metro







7 Lamella Double Parabolic Luminaire



Prismatic Lens Luminaire



Mesh Louver Luminaire



Panel Luminaire



Mesh Louver Indirect Luminaire



IP65 Tempered Glass Parabolic Luminaire



IP65 Sandblasted Glass Luminaire



Negatoscope Luminaire



Slim LED Panel Pendant Luminaire



Decorative Luminaire



Linear Luminaire



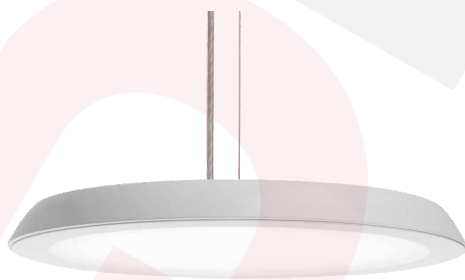
Pendant Luminaire



Pendant Luminaire



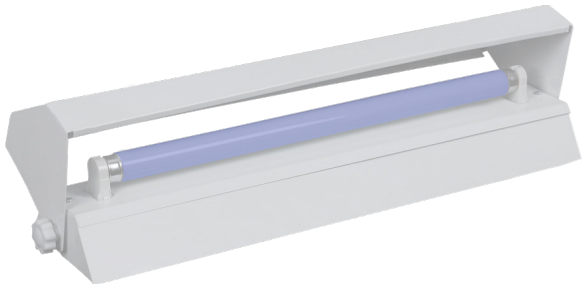
Pendant Luminaire



Pendant Luminaire



Pendant Luminaire



Ultraviolet Luminaire



UV-C Hangable/Portable Luminaire

## DOWN-LIGHT SPOT LIGHT



### TECHNICAL DATA

**Luminaire Body:** Sheet Metal, Aluminium, Aluminium Extrusion  
**Luminaire Optic:** Opal Diffuser  
**Led Type:** Mid Power LED  
**Power(W):** From 8W up to 80W  
**Mains Voltage(V):** From 220-240V  
**Colour Temperature(K):** 3000-6500K  
**IP Protection:** IP20 - IP40 - IP65  
**Working Temperature(°C):** From -20°C up to +50°C  
**Body Colour:** Ral 9003

\* Other colours can be produced upon the customer's requests.

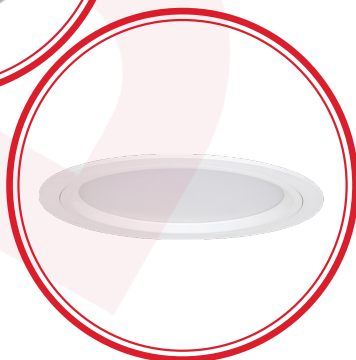
\* DALI, SwitchDIM and Emergency options can be produced upon the customer's requests.

### INTRODUCTION

A downlight is a light fixture that is put into a hollow aperture in a ceiling (mounted on or recessed) to direct light downward, whereas a spotlight is a light fixture that is fastened to a wall or ceiling and can generate numerous light beams to focus light directly onto a location or object. It looks like light is shining from a hole in the ceiling, focusing the light in a downward direction as a broad floodlight or narrow spotlight when it is placed.

### APPLICATION

- Offices
- Conference Rooms
- Shopping Malls
- Hospitals
- Educational Facilities
- Foyers
- Metro





Horizontal Downlight



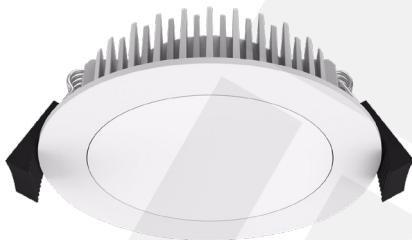
Vertical Downlight



Aluminium Injection



Inner Diffuser



Flat Diffuser



Recessed Mounted Downlight with Glass



COB LED Downlight



Slim LED Panel Downlight



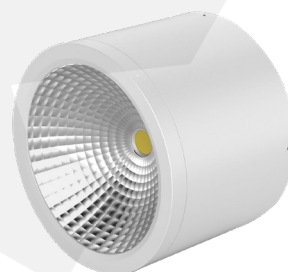
Surface Mounted Horizontal Downlight



Surface Mounted Oval Downlight



Surface Mounted Downlight with Glass



Surface Mounted COB LED Downlight



Recessed Mounted Spotlight



Surface Mounted Spotlight



Track Spot Luminaires

## CEILING MOUNTED INDOOR LIGHTING



### TECHNICAL DATA

**Luminaire Body:** Sheet Metal, Aluminium, Aluminium Extrusion

**Luminaire Optic:** Opal Diffuser

**Led Type:** Mid Power LED

**Power(W):** From 8W up to 80W

**Mains Voltage(V):** From 220-240V

**Colour Temperature(K):** 3000-6500K

**IP Protection:** IP20 - IP40 - IP65

**Working Temperature(°C):** From -20°C up to +50°C

**Body Colour:** Ral 9003

\* Other colours can be produced upon the customer's requests.

\* DALI, SwitchDIM and Emergency options can be produced upon the customer's requests.

### INTRODUCTION

Ceiling-mounted lightings are light fixtures that are placed on a ceiling and project outward from the surface. There are a number of ceiling-mounted lights in various forms and configurations that may be used to disperse light by shining it up, down, or flat against the ceiling.

### APPLICATION

- Residential Area
- Offices
- Conference Rooms
- Shopping Malls
- Hospitals
- Educational Facilities
- Lobbies





LED with Sensor



32W Ceiling Luminaire



Globe Luminaire



Globe Luminaire with Sensor



## EMERGENCY LIGHTING



### TECHNICAL DATA

**Luminaire Body:** Metal, Polymer Injection Body, Aluminium Extrusion  
**Luminaire Diffuser:** Highly transmissive PMMA, Glass  
**Led Type:** Continuous LED Luminaire  
**Power(W):** From 3W up to 10W  
**Mains Voltage(V):** From 220-240V  
**Colour Temperature(K):** 3000-6500K  
**Discharging Time:** Up to 6 hours  
**IP Protection:** IP20 - IP40 - IP60  
**Body Colour:** Ral 9003  
\* Other colours can be produced upon the customer's requests.

### INTRODUCTION

Emergency lighting fixtures are a battery-powered illumination gadget that automatically turns on when a building loses electricity.

### APPLICATION

- Residential Areas
- Offices
- Hospitals
- Hotels
- Conference Rooms
- Shopping Malls
- Parking Areas





Emergency LED Spots



Emergency LED Spots



Emergency LED Spots



Emergency Spots



LED Emergency Spots



LED Lanterns



LED Lanterns



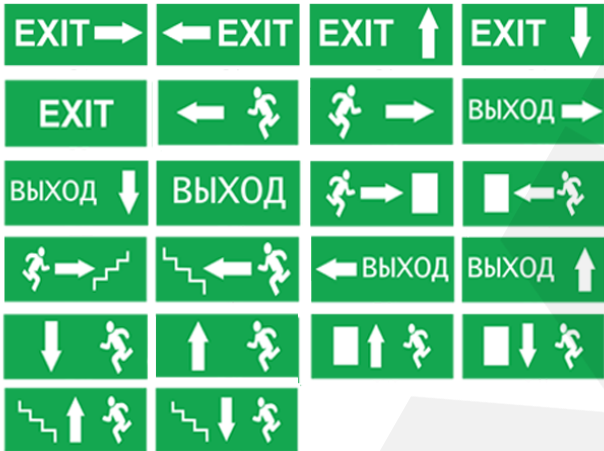
LED Lanterns



Pendant Emergency Exit Luminaire



Recessed Mounted Emergency Exit Luminaire



Emergency Direction Legends



# OUTDOOR LIGHTING

## Content of Outdoor Lighting

### **Road and Street Luminaire**

- Road and Street Luminaire
- LED Road and Street Luminaire
- Catenary Luminaire
- Accessories

### **Floodlights**

- Floodlights
- Symmetric Floodlights
- Asymmetric Floodlights
- Halogen Floodlights
- Tunnel Luminaire
- LED Floodlights
- High Pressure Ballast Kits
- High Pressure Lamp
- Surface Mounted RGB Wall-washer
- Recessed Wall-washer
- Pool Luminaire
- Rain LED Projector

### **Park and Garden Luminaire**

- Injection Aluminium Indirect Luminaire
- Park and Garden Luminaire
- Park and Garden Luminaire Sets
- Grass Luminaire
- Wall Top Luminaire
- LED Appliqués
- Appliqués
- Outdoor Globes
- Recessed Wall Appliqué Luminaire

## ROAD & STREET LIGHTINGS



### TECHNICAL DATA

**Luminaire Body:** Aluminium Injection  
**Luminaire Diffuser:** PMMA Optic Lens  
**Led Type:** High-power LED  
**Power(W):** From 15W up to 250W  
**Mains Voltage(V):** From 220-240V  
**Colour Temperature(K):** 3000-6500K  
**Working Temperature(°C):** From -40°C up to +50°C  
**IP Protection:** IP20 - IP40 - IP60  
**Body Colour:** Ral 9003  
\* Other colours can be produced upon the customer's requests.

### INTRODUCTION

Street and road lighting provide a number of important benefits. It can be used to promote security in urban areas and to increase the quality of life by artificially extending the hours in which it is light so that activity can take place. Drivers, cyclists, and pedestrians are all safer with street and road illumination.

### APPLICATION

- Streets and Roads
- Parking Lots
- Residential Areas
- Industrial Zones
- Railway Stations





Road and Street Luminaire



Road and Street Luminaire



Road and Street Luminaire



LED Road and Street Luminaire



LED Road and Street Luminaire



LED Road and Street Luminaire



LED Road and Street Luminaire



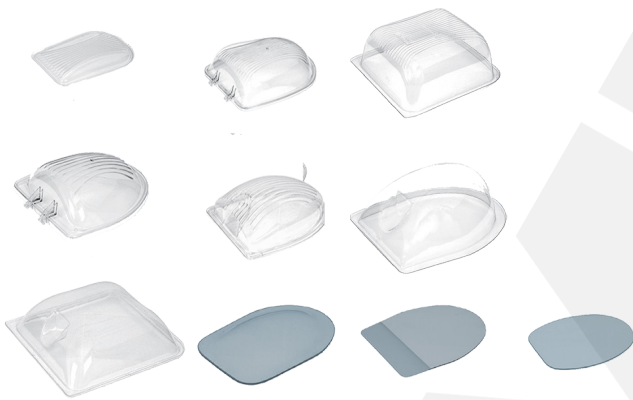
Catenery Luminaire



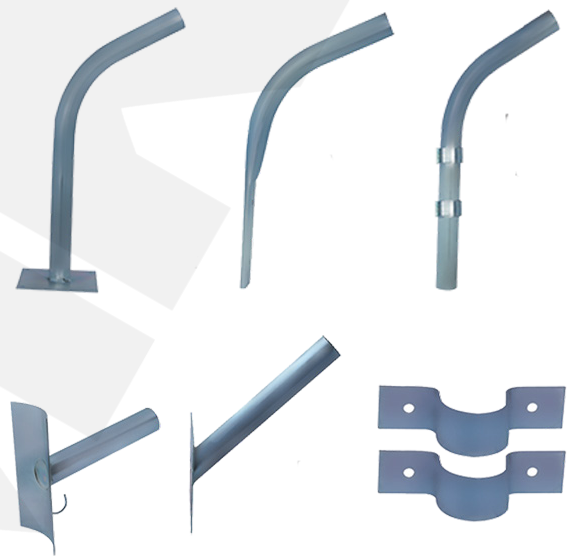
Catenary Luminaire



Catenary Luminaire



Accessories



Accessories



## FLOODLIGHTS



### TECHNICAL DATA

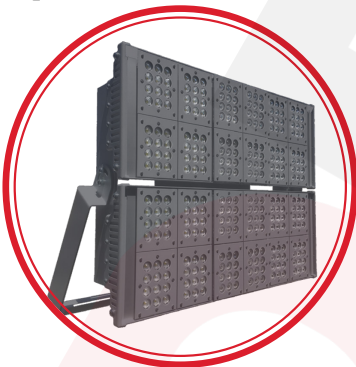
**Luminaire Body:** Metal, Polymer Injection Body, Aluminium Extrusion  
**Luminaire Diffuser:** Highly transmissive PMMA, Glass  
**Led Type:** Continuous LED Luminaire  
**Power(W):** From 30W up to 1000W  
**Mains Voltage(V):** From 220-240V  
**Colour Temperature(K):** 3000-6500K  
**Working Temperature(°C):** From -20°C up to +50°C  
**IP Protection:** IP20 - IP40 - IP60  
**Body Colour:** Ral 9003  
\* Other colours can be produced upon the customer's requests.

### INTRODUCTION

Floodlights are enormous light sources having a wide beam and strong lights. Floodlights are most often used in areas that require a lot of artificial light.

### APPLICATION

- Airports
- Concert Area
- Sport Facilities
- Theatre Halls
- Construction Area
- Open Parking Lots
- Squares





Floodlights



Floodlights



Symmetric Floodlights



Symmetric Floodlights



Asymmetric Floodlights



Asymmetric Floodlights



Halogen Floodlights



Halogen Floodlights



Tunnel Luminaire



Tunnel Luminaire



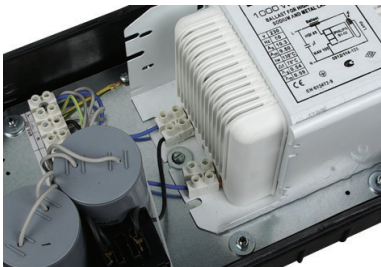
LED Floodlights



LED Floodlights



High Pressure Ballast Kits



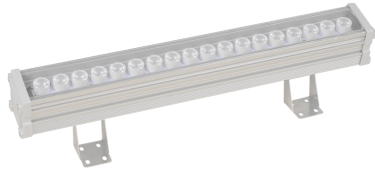
High Pressure Ballast Kits



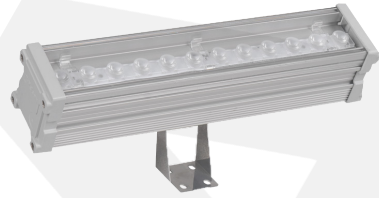
High Pressure Lamp



High Pressure Lamp



Surface Mounted RGB Wall-washer



Surface Mounted RGB Wall-washer



Recessed Wall-washer



Pool Luminaire



Pool Luminaire

## PARK & GARDEN LIGHTINGS



### TECHNICAL DATA

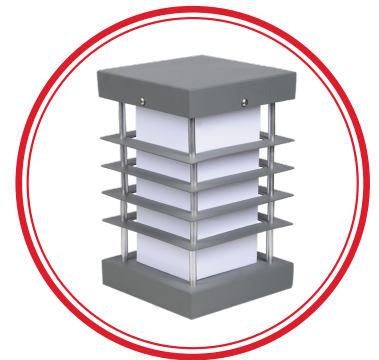
**Luminaire Body:** Poly Carbonate, Aluminium, Aluminium Injection(with/without Electrostatic Powder)  
**Luminaire Diffuser:** PMMA, Clear Glass, Opal Diffuser  
**Led Type:** High-power LED  
**Power(W):** From 8W up to 150W  
**Mains Voltage(V):** From 220-240V  
**Colour Temperature(K):** 3000-6500K  
**Working Temperature(°C):** From -20°C up to +50°C  
**IP Protection:** IP20 - IP40 - IP60  
**Body Colour:** Ral 9003  
\* Other colours can be produced upon the customer's requests.

### INTRODUCTION

The use of outdoor illumination of public landscapes and private gardens is referred to as park and garden lighting, sometimes known as landscape lighting. This style of lighting is mostly utilized for accessibility, aesthetics at night, and safety. LED garden lights are being heralded as the next great thing in energy-efficient lighting. LED lights have properties that make them particularly well suited for outdoor use.

### APPLICATION

- Streets
- Residential Areas
- Squares
- Parks





Injection Aluminium Indirect Luminaire



Injection Aluminium Indirect Luminaire



Injection Aluminium Indirect Luminaire



Park and Garden Luminaire Sets



Park and Garden Luminaire Sets



Park and Garden Luminaire Sets



Park and Garden Luminaire



Park and Garden Luminaire



Park and Garden Luminaire



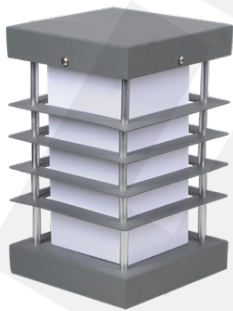
Grass Luminaire



Grass Luminaire



Grass Luminaire



Wall Top Luminaire



Wall Top Luminaire



LED Appliqués



LED Appliqués



Appliqué



Appliqué



Recessed Wall  
Appliqué Luminaire

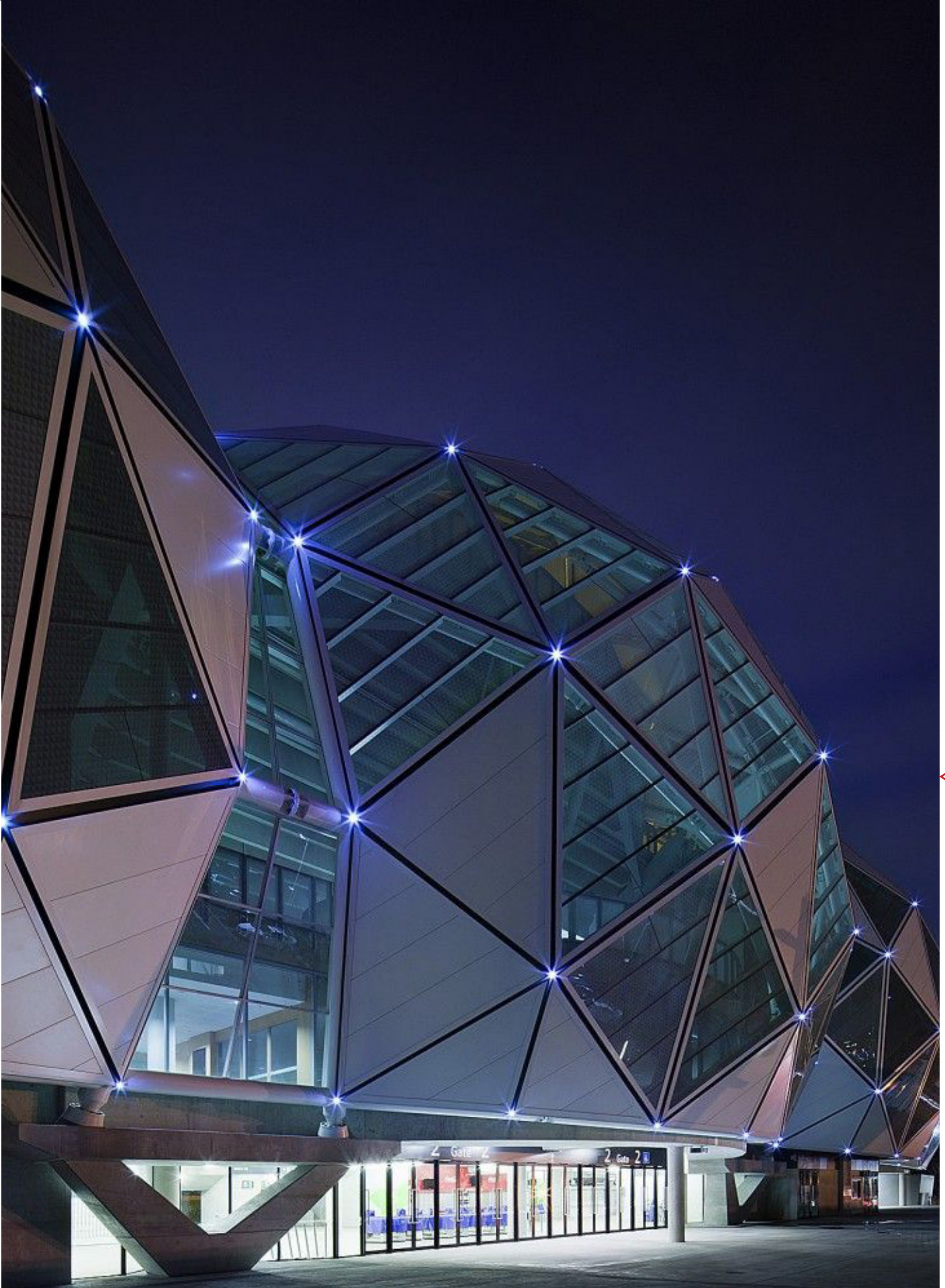


Recessed Wall  
Appliqué Luminaire



Recessed Wall  
Appliqué Luminaire







# INDUSTRIAL LIGHTING

## Content of Industrial Lighting

### **Highbay Luminaire**

- Highbay Luminaire
- Lowbay Luminaire
- LED Highbay Luminaire
- IP44 Highbay Luminaire
- IP20 Highbay Luminaire
- Square Highbay Luminaire

### **Waterproof Luminaire**

- Waterproof T8 Luminaire
- Waterproof T5 Luminaire
- Waterproof Luminaire
- LED Waterproof Luminaire

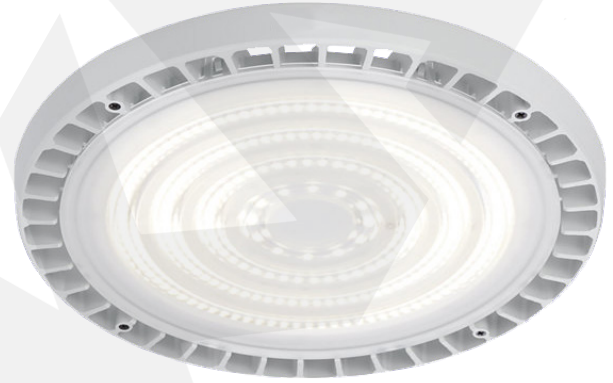
### **Batten Luminaire**

- TMS T5 Luminaire
- TMS T8 Luminaire
- Cove Lighting Luminaire
- Batten Luminaire with IP65 Lamp holders
- Fibreglass Luminaires with IP65 Lamp holders
- Supermarket Luminaire

### **Canopy Luminaire**

- Recessed Petrol Canopy Luminaire
- Recessed Canopy Luminaire
- Surface Mounted Canopy Luminaire
- Recessed LED Canopy Luminaire

## HIGHBAY LUMINAIRE



### TECHNICAL DATA

**Luminaire Body:** Aluminium Injection, Electrostatic Powder Coated Metal, Anodized Aluminium Frame, GRP

**Luminaire Optic:** Micro prismatic Opal, Tempered Glass

**Led Type:** Mid Power LED

**Power(W):** From 80W up to 240W

**Mains Voltage(V):** From 220-240V

**Colour Temperature(K):** 5000K-6500K

**IP Protection:** IP20 - IP40 - IP60

**Working Temperature(°C):** From -20°C up to +50°C

**Body Colour:** Ral 9003

\* Other colours can be produced upon the customer's requests.

\* DALI and SwitchDIM options can be produced upon the customer's requests.

### INTRODUCTION

A high bay light is one that is designed to be installed in a ceiling that is 20-40 feet (6-12m) above the ground level. In industrial and commercial spaces, a high bay ceiling is common.

### APPLICATION

- Residential Areas
- Offices
- Conference Rooms
- Shopping Malls
- Parking Areas





Highbay Luminaire



Highbay Luminaire



Lowbay Luminaire



Lowbay Luminaire



LED Highbay Luminaire



LED Highbay Luminaire



IP44 Highbay Luminaire



IP44 Highbay Luminaire



IP20 Highbay Luminaire



IP20 Highbay Luminaire



Square Highbay Luminaire



Square Highbay Luminaire



Rounded Highbay Luminaire



Rounded Highbay Luminaire

## WATERPROOF LUMINAIRE



### TECHNICAL DATA

**Luminaire Body:** Aluminium, Aluminium Poly-carbon Glass  
**Luminaire Optic:** Opal Diffuser  
**Led Type:** Mid Power LED  
**Power(W):** From 10W up to 75W  
**Mains Voltage(V):** From 220-240V  
**Colour Temperature(K):** 3000K-4000K  
**IP Protection:** IP65  
**Working Temperature(°C):** From -20°C up to +35°C  
**Body Colour:** Ral 9003  
\* Other colours can be produced upon the customer's requests.  
\* DALI, Corridor Function and Emergency Lighting Unit Application (Up to 3 hours working) options can be produced upon the customer's requests.

### INTRODUCTION

Waterproof lighting fixtures are employed in areas that are constantly exposed to water, snow, dirt, or rain. Similarly, because these fixtures can endure deformations induced by water and ice, they can be put into a pavement. These fixtures, on the other hand, have a low or high IP rating. Low IP ratings indicate that they can be used in non-extremely damp indoor or outdoor environments. On the other hand, light fixtures with high IP ratings are required in areas where there will be a lot of water, dust, and the possibility of coming into touch with a lot of solid. These high-rated light fixtures are less sensitive to water, especially when the LED strip lights have waterproof coatings.

### APPLICATION

- Gas Stations
- Sport Facilities
- Plants
- Residential Areas
- Industrial Kitchens





Waterproof T8 Luminaire



Waterproof T8 Luminaire



Waterproof T8 Luminaire



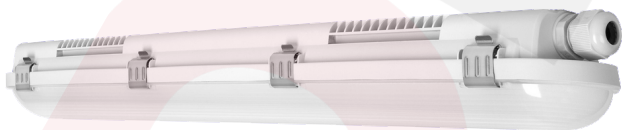
Waterproof T5 Luminaire



Waterproof T5 Luminaire



Waterproof T5 Luminaire



Waterproof Luminaire



Waterproof Luminaire





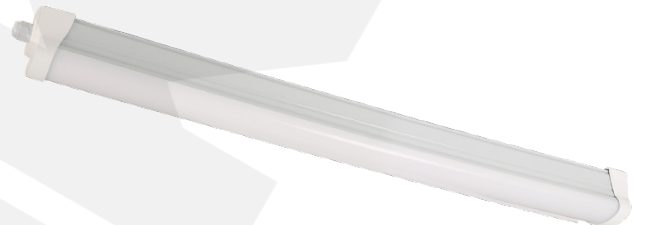
Waterproof Luminaire



LED Waterproof Luminaire



LED Waterproof Luminaire



LED Waterproof Luminaire

## BATTEN LUMINAIRE



### TECHNICAL DATA

**Luminaire Body:** Electrostatic Powder Coated Metal, GRP, PC, Plastic

**Luminaire Optic:** PC Diffuser

**Led Type:** Mid Power LED

**Power(W):** From 10W up to 40W

**Mains Voltage(V):** From 220-240V

**Colour Temperature(K):** 3000K-4000K

**IP Protection:** IP20 - IP40 - IP65

**Working Temperature(°C):** From -20°C up to +35°C

**Body Colour:** Ral 9003

\* Other colours can be produced upon the customer's requests.

\* DALI, Corridor Function and Emergency Lighting Unit Application (Up to 3 hours working) options can be produced upon the customer's requests.

### INTRODUCTION

Batten lights are lighting fixtures that provide consistent, spot-free illumination throughout a space. They are prized for their remarkable energy efficiency. When compared to T5 fluorescent tubes, LED batten lighting fixtures can save users up to 40% on energy costs.

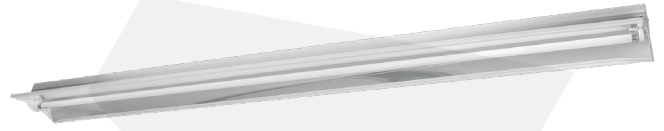
### APPLICATION

- Schools
- Hospitals
- Sport Facilities
- Plants
- Residential Areas





TMS T5 Luminaire



TMS T5 Luminaire



TMS T5 Luminaire



TMS T8 Luminaire



TMS T8 Luminaire



TMS T8 Luminaire



Cove Lighting Luminaire



Cove Lighting Luminaire



Cove Lighting Luminaire



Batten Luminaire with IP65 Lamp holders



Batten Luminaire with IP65 Lamp holders



Batten Luminaire with IP65 Lamp holders



Fibreglass Luminaires with IP65 Lamp holders



Fibreglass Luminaires with IP65 Lamp holders

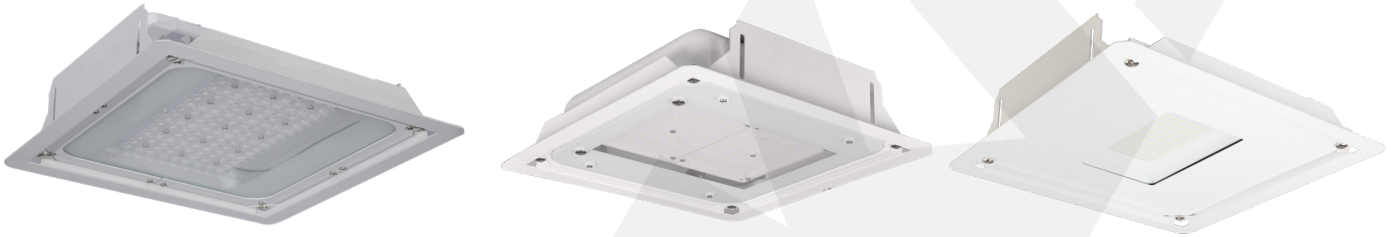


Fibreglass Luminaires with IP65 Lamp holders



Supermarket Luminaire

## CANOPY LIGHTINGS



### TECHNICAL DATA

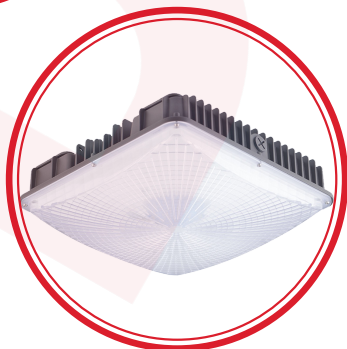
**Luminaire Body:** Poly Carbonate, Aluminium, Aluminium Injection(with/without Electrostatic Powder)  
**Luminaire Diffuser:** PMMA, Clear Glass, Opal Diffuser  
**Led Type:** High-power LED  
**Power(W):** From 8W up to 150W  
**Mains Voltage(V):** From 220-240V  
**Colour Temperature(K):** 3000-6500K  
**Working Temperature(°C):** From -20°C up to +50°C  
**IP Protection:** IP20 - IP40 - IP60  
**Body Colour:** Ral 9003  
\* Other colours can be produced upon the customer's requests.

### INTRODUCTION

Canopy fixtures are fringe lightings that are erected at the industrial sites, and petrol stations to protect them from elements like rain and snow. When compared to traditional canopy products, LED canopy luminaires are easier to maintain, use less energy, and deliver consistent performance. For LED canopy luminaires, the width of the facade and the height of the area should be taken into account, and the lumen package and light distribution characteristic of the luminaire should be chosen based on these factors. Precipitation and other weather events are not a problem with LED canopy luminaires.

### APPLICATION

- Streets
- Residential Areas
- Squares
- Parks





Recessed Mounted Petrol Canopy Luminaire



Recessed Mounted Petrol Canopy Luminaire



Recessed Mounted Petrol Canopy Luminaire



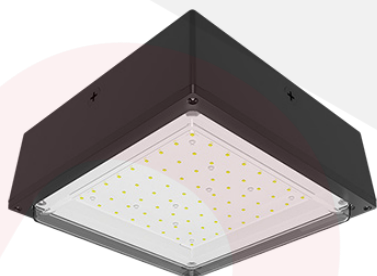
Recessed Mounted Canopy Luminaire



Surface Mounted Canopy Luminaire



Surface Mounted Canopy Luminaire



Surface Mounted Canopy Luminaire



Recessed Mounted LED Canopy Luminaire



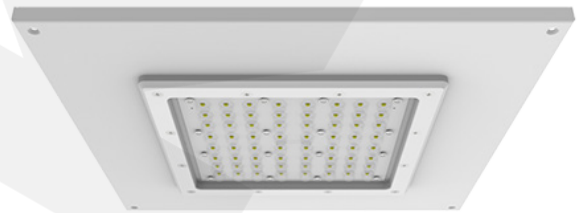
Recessed Mounted LED Canopy Luminaire



Recessed Mounted LED Canopy Luminaire



Recessed Mounted LED Canopy Luminaire



Recessed Mounted LED Canopy Luminaire





# EX-PROOF LIGHTING

## Content of Ex-Proof Lighting

### **Ex-proof Luminaire**

- Ex-proof LED Luminaire
- Ex-proof T8 Waterproof Luminaire

### **Ex-proof Floodlight**

### **Ex-proof Highbay Luminaire**

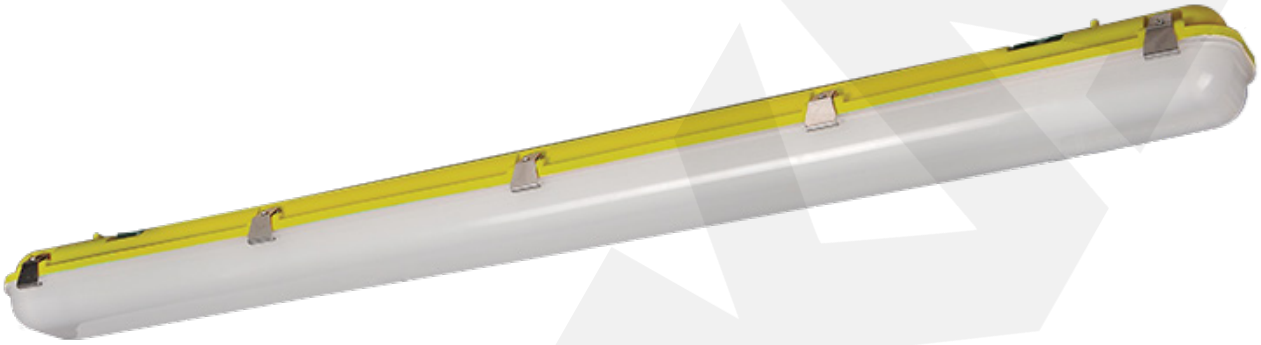
### **Ex-proof LED Canopy Luminaire**

### **Ex-proof Spotlight**

### **Ex-proof Portable Lighting Fixtures**

### **Ex-proof Emergency, Warning and Signal Lighting**

## EX-PROOF LED LUMINAIRE



### TECHNICAL DATA

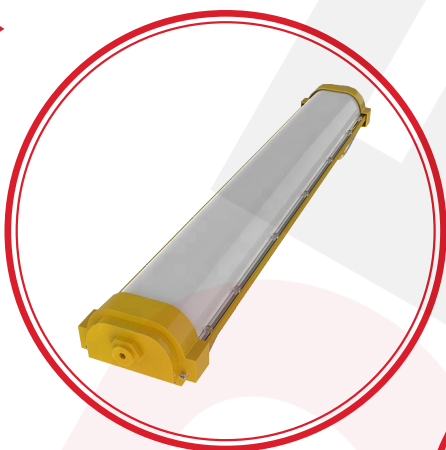
**Luminaire Body:** GRP  
**Luminaire Diffuser:** High transmission PMMA Opal cover with UV protection, non-yellowing throughout lifetime of the luminaire  
**Led Type:** SMD Mid Power  
**Power(W):** From 25W up to 45W  
**Mains Voltage(V):** From 220-240V  
**Colour Temperature(K):** 4000-6500K  
**IP Protection:** IP65

### INTRODUCTION

Ex-Proof luminaires may be utilized safely in places with a high risk of explosion as well as hazardous gas and dust environments. Ex-proof lighting fixtures have exceptionally tough lenses that can resist rigorous working conditions and avoid cracks that may lead to leaks.

### APPLICATION

- Chemistry Plants
- Paint Plants
- Oil Storage Facility
- Energy Plant
- Harbor and Shipyard
- Oil Filling Plants
- Industrial Areas
- Fuel-Oil Station



## EX-PROOF T8 WATERPROOF LUMINAIRE



### TECHNICAL DATA

**Body:** Fiberglass  
**Reflector:** Electrostatic powder coated nonyellowing metallic reflector providing optimum diffusion  
**Luminaire Diffuser:** High Transmission Opal Prismatic Cover  
**Base:** G13  
**Lamp Type:** TL-D  
**Power(W):** From 25W up to 45W  
**Mains Voltage(V):** From 220-240V  
**Colour Temperature(K):** 4000-6500K  
**IP Protection:** IP65

### INTRODUCTION

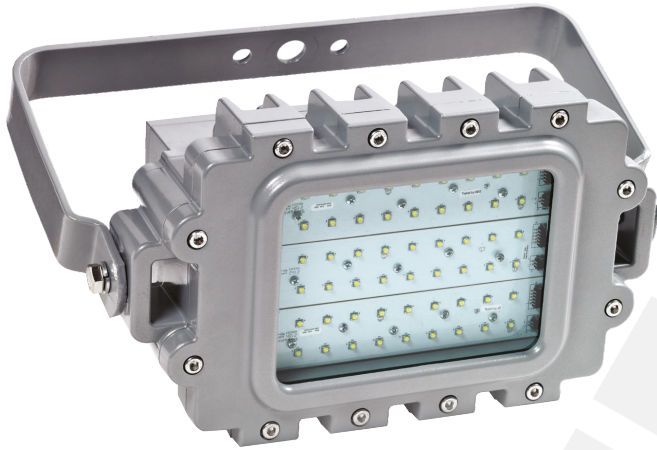
Ex-Proof luminaires may be utilized safely in places with a high risk of explosion as well as hazardous gas and dust environments. Ex-proof lighting fixtures have exceptionally tough lenses that can resist rigorous working conditions and avoid cracks that may lead to leaks.

### APPLICATION

- Chemistry Plants
- Paint Plants
- Oil Storage Facility
- Energy Plant
- Harbor and Shipyard
- Oil Filling Plants
- Industrial Areas
- Fuel-Oil Station



## EX-PROOF LED FLOODLIGHTS



### TECHNICAL DATA

**Luminaire Body:** Poly Carbonate, Aluminium, Aluminium Injection(with/without Electrostatic Powder)  
**Luminaire Diffuser:** PMMA, Clear Glass, Opal Diffuser  
**Led Type:** High-power LED  
**Power(W):** From 8W up to 150W  
**Mains Voltage(V):** From 220-240V  
**Colour Temperature(K):** 3000-6500K  
**Working Temperature(°C):** From -20°C up to +50°C  
**IP Protection:** IP66  
**Body Colour:** Ral 9003  
\* Other colours can be produced upon the customer's requests.

### INTRODUCTION

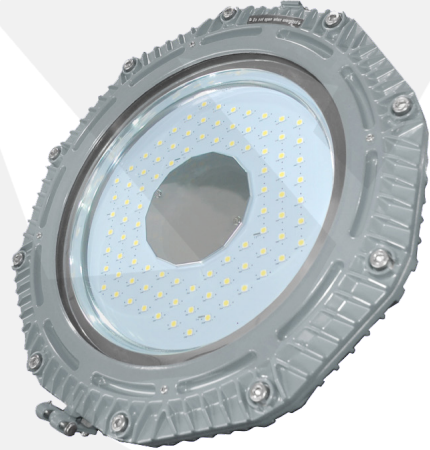
Explosion-proof floodlight provides the greatest protection for facilities that store, refine, or manufacture combustible, flammable, or ignitable materials. The long-lasting and robust electrostatic surfacing is applied to the heavy-duty, anodized die-cast shell. This extra protection prevents over voltage and heating, as well as the build up of electrostatic energy.

### APPLICATION

- Chemistry Plants
- Paint Plants
- Oil Storage Facility
- Energy Plant
- Harbor and Shipyard
- Oil Filling Plants
- Industrial Areas
- Fuel-Oil Station



## EX-PROOF HIGHBAY LUMINAIRE



### TECHNICAL DATA

**Luminaire Body:** Aluminium Injection Frame With Electrostatic Powder Coating  
**Luminaire Diffuser:** IK08 Standard Compliant, Heat and Impact Resistant, Clear Tempered Glass  
**Led Type:** SMD Mid Power LED  
**Power(W):** From 50W up to 200W  
**Mains Voltage(V):** From 220-240V  
**Colour Temperature(K):** 4000-6500K  
**Working Temperature(°C):** From -40°C up to +55°C  
**IP Protection:** IP66  
**Body Colour:** Ral 1023  
\* Other colours can be produced upon the customer's requests.

### INTRODUCTION

Ex-proof high-bay luminaires are tempered glass fixtures that can withstand impact. It's utilized in places like refineries, fueling stations, chemical plants, and cosmetics manufacturers where there's a significant risk of explosion. It delivers illumination from various angles thanks to its angle-adjustable mounting brackets.

### APPLICATION

- Chemistry Plants
- Paint Plants
- Oil Storage Facility
- Energy Plant
- Harbor and Shipyard
- Oil Filling Plants
- Industrial Areas
- Fuel-Oil Station



## EX-PROOF LED CANOPY LIGHTING



### TECHNICAL DATA

**Luminaire Body:** Aluminium Injection Frame With Electrostatic Coating

**Luminaire Diffuser:** High transmission PMMA Opal cover with UV protection, non-yellowing throughout lifetime of the luminaire

**Led Type:** SMD Mid Power

**Power(W):** From 50W up to 200W

**Mains Voltage(V):** From 220-240V

**Colour Temperature(K):** 4000-6500K

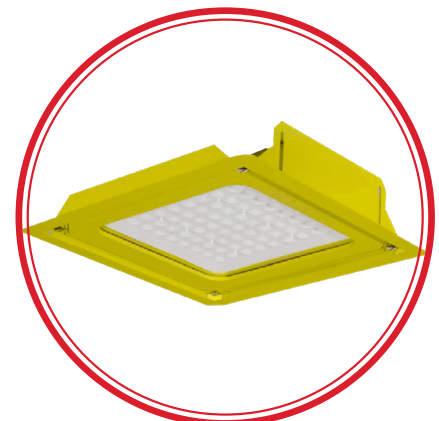
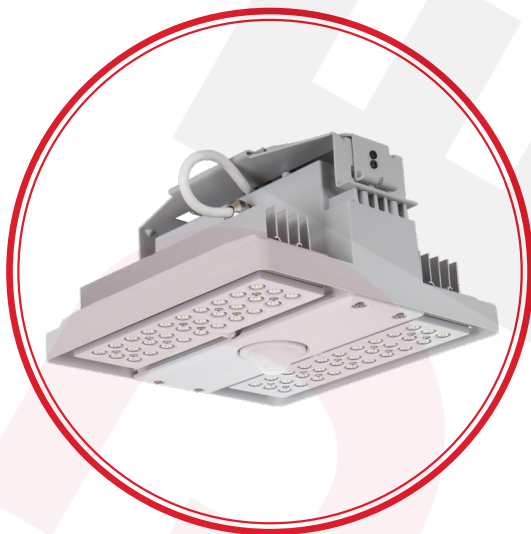
**IP Protection:** IP65

### INTRODUCTION

Ex-proof canopy fixtures are fringe lightings that are placed at industrial locations, such as fuel stations, chemical plants, harbor and shipyards, oil filling plants, and so on, to protect them from harsh and dangerous environments such as rain, snow, dust.

### APPLICATION

- Chemistry Plants
- Paint Plants
- Oil Storage Facility
- Energy Plant
- Harbor and Shipyard
- Oil Filling Plants
- Industrial Areas
- Fuel-Oil Station



## EX-PROOF SPOTLIGHT



### TECHNICAL DATA

**Luminaire Body:** Aluminium Injection Frame With Electrostatic Powder Coating  
**Luminaire Diffuser:** IK08 Standard Compliant, Heat and Impact Resistant, Clear Tempered Glass  
**Led Type:** SMD Mid Power LED  
**Power(W):** From 50W up to 200W  
**Mains Voltage(V):** From 220-240V  
**Colour Temperature(K):** 4000-6500K  
**Working Temperature(°C):** From -20°C up to +40°C  
**IP Protection:** IP66  
**Body Colour:** Ral 1023  
\* Other colours can be produced upon the customer's requests.

### INTRODUCTION

Explosion-proof spotlight is a lighting fixture designed to protect against the ignition of various environmental factors by uncontained sparks. Explosion-proof designs separate the internal electrical reactions of a light fixture from external fumes or hazardous materials.

### APPLICATION

- Chemistry Plants
- Paint Plants
- Oil Storage Facility
- Energy Plant
- Harbor and Shipyard
- Oil Filling Plants
- Industrial Areas
- Fuel-Oil Station



## PORTABLE EX-PROOF LUMINAIRE



### TECHNICAL DATA

**Luminaire Body:** Aluminium Injection Frame With Electrostatic Coating  
**Led Type:** SMD Mid Power LED  
**Power(W):** From 3W up to 25W  
**Mains Voltage(V):** From 220-240V  
**Colour Temperature(K):** 4000-6500K  
**Working Hour:** Up to 16 hours  
**IP Protection:** IP65 - IP66 - IP68

### INTRODUCTION

Ex-proof portable lighting is a lighting fixture that can be picked up, relocated, or plugged in with or without an electrical outlet when the working environment is harsh and dangerous.

### APPLICATION

- Chemistry Plants
- Paint Plants
- Oil Storage Facility
- Energy Plant
- Harbor and Shipyard
- Oil Filling Plants
- Industrial Areas
- Fuel-Oil Station





## EX-PROOF EMERGENCY WARNING SIGNAL LIGHTING



### TECHNICAL DATA

**Luminaire Body:** Aluminium Injection Frame With Electrostatic Coating  
**Luminaire Diffuser:** Heat and Impact Resistant, Clear or Blurry Tempered Glass  
**Led Type:** SMD Mid Power LED  
**Power(W):** From 2W up to 15W  
**Mains Voltage(V):** From 220-240V  
**Working Hours:** Up to 16 hours  
**Working Temperature(°C):** From -20°C up to +55°C  
**IP Protection:** IP65 - IP66 - IP68  
**Body Colour:** Ral 1023  
 \* Other colours can be produced upon the customer's requests.

### INTRODUCTION

Ex-proof emergency lighting refers to light sources that are battery-backed or otherwise independently powered and are meant to turn on when a power loss causes low visibility in the workplace. Many workplace standards also demand that emergency lights be installed.

### APPLICATION

- Chemistry Plants
- Paint Plants
- Oil Storage Facility
- Energy Plant
- Harbor and Shipyard
- Oil Filling Plants
- Industrial Areas
- Fuel-Oil Station

