

DEMKA

single source for all electrical needs



COMPANY PROFILE

DEMKA, established in 1993, has been growing rapidly thereby increasing its market activity throughout the years.

DEMKA is a privately owned electrical materials supplier offering “All In One at Single Source” solutions for all your electrical and industrial material needs.

Our main aim is to provide our customers with high standard of service and top quality products at competitive price. We try to give you the advantage of supplying all your electrical items from one source instead of spending your time and money on searching suppliers and trying to develop business relations each time.

We are committed to our philosophy of being a true partner where our clients need us the most. Our company offers years of experience in the market to your service, matching the best quality and good prices with your needs.

DEMKA is currently a “preferred supplier” shortlisted with many authorities. Our staff is technically equipped to assist you about the specifications and technical details of the materials and offers customized solutions. DEMKA has experience in international market like countries in European, Middle East, African and Asian markets.

We aim to be your best Supply Channel you have ever worked with!

Our company values a customer oriented company culture and pursues the Total Quality Management approach. We understand that Total Quality Management is a team job and all employees, from the top management to the smallest unit, embrace this concept to the fullest.

DEMKA adds value for customers through a well-qualified management team as well as professional employees and a strong supplier chain.

Our R&D department is continuously working towards the aim of early recognition of customer demand with focus on customer satisfaction.



MISSION, VISION and VALUES

Mission

The purpose of our company, which was established with the title of “All in one at a single source” making our customers save time, energy and cost by supplying all electrical material from one source.

Vision

Our vision is maintaining our success as a pioneer in the sector, exemplary in its service and the first choice of the customer.

Values

Our company values the customer-oriented company culture and pursues the Total Quality Management approach. We understand that Total Quality Management is a team job and all employees, from the top management to the smallest unit, embrace this concept to the fullest. We always aim to remain in the documentation and its service meticulously.

DEMKA adds value for customers through a well-qualified management team as well as professional employees and a strong supplier chain. Our R&D department is continuously working towards the aim of early recognition of customer demand with a focus on customer satisfaction.

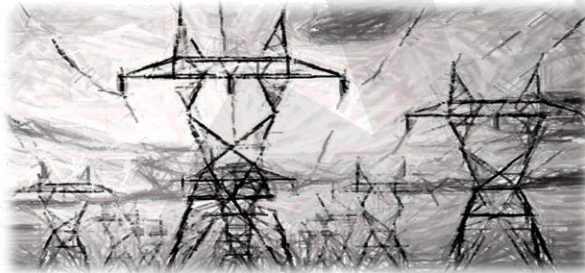
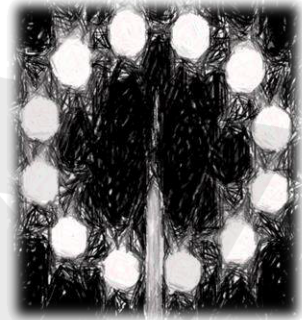
ISO DOCUMENTS



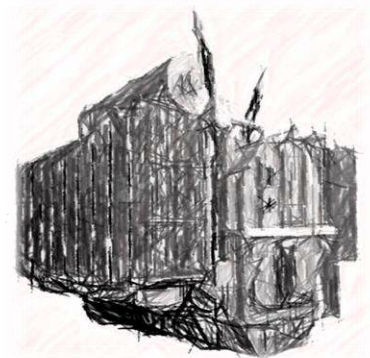
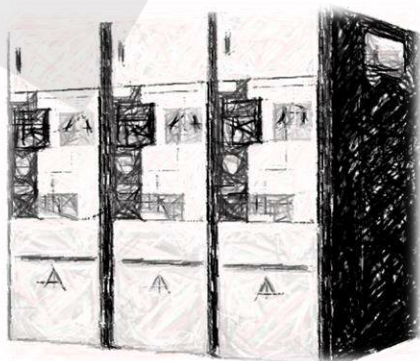
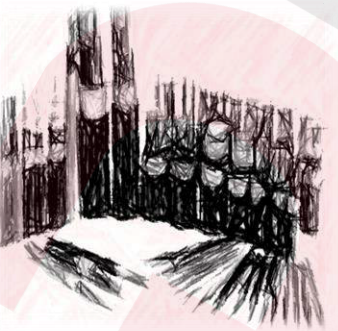
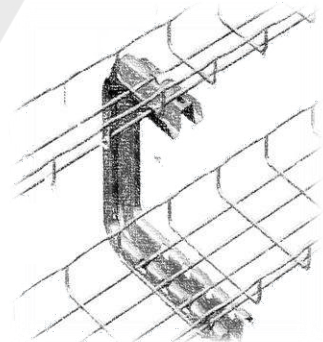
INDEX

• Company Profile	2
• Vision, Mission and Values	4
• ISO Documents	5
• Cables	9
• Medium Voltage Distribution Systems & Energy Automation	27
• Transformers	29
• Low Voltage Distribution Systems & Energy Automation	31
• Busbar Energy Transmission & Distribution Systems	35
• Cable Trays, Cable Ladders, Cable support Systems & Cable Conduits	37
• Lighting Poles Energy Transmission Line Towers & Other Steel Structures	41
• Generator & Accessories	43
• Lighting Fixtures & Accessories	45
• Earthing – Lightning & Thermos Welding Materials	51
• Ex-proof Electrical Materials	61
• Other Electrical Equipment	65
• Notes	73





PRODUCTS



CABLES

An electrical cable is an assembly of one or more wires running side by side or bundled, which is used to carry electric current. One or more electrical cables and the associated connections can be combined to form a cable assembly, though this incomplete good isn't always suitable for connecting two things. (For instance, to have a connector soldered onto a printed circuit board and fastened to the housing.). Cable assemblies can also take the shape of a cable tree or cable harness to link many terminals together.



- BUILDING WIRES & INSTALLATION CABLES
- LOW VOLTAGE POWER CABLES
- MEDIUM VOLTAGE POWER CABLES
- AERIAL BUNDLED CABLES (ABC) & ALUMINIUM OVERHEAD LINE CONDUCTORS
- INDUSTRIAL RUBBER CABLES
- MINING CABLES
- FIBER OPTIC & TELECOMMUNICATION CABLES
- INSTRUMENTATION / CONTROL CABLES
- MARINE & OFFSHORE CABLES
- RAILWAY CABLES
- DATA & SIGNAL CABLES
- SILICON CABLES

Building Wires & Installation Cables



- 450/750V PVC Insulated Single Core Cables
- 450/750V PVC Insulated Single Core Flexible Cables
- 300/500V PVC Insulated Multi Core Cables
- 300/500V PVC Insulated Multi Core Flat Cables
- 300/500V PVC Insulated Multi Core Flat Twin & Earth Cables
- 300/500V PVC Insulated Multi Core Flexible Cables
- 300/500V PVC Insulated Multi Core Flexible Flat Cables
- 300/500V Insulated Multi Core Flexible Cold Resistant Cables
- 300/500V PVC Insulated Multi Core Flexible Heat Resistant Cables
- 450/750V HFFR(LSOH) Insulated Single Core Cables
- 450/750V HFFR(LSOH) Insulated Single Core Flexible Cables
- 300/500V HFFR(LSOH) Insulated & Sheathed Multi Core Flexible Cables
- 300/500V HFFR(LSOH) Insulated & Sheathed Multi Core Cables

Low Voltage Power Cables



- PVC Insulated, PVC Sheathed 0,6/1kV Power Cables
- PVC Insulated, PVC Sheathed Armoured 0,6/1kV Power Cables
- PVC Insulated, PVC Sheathed Cu. Screened 0,6/1kV Power Cables
- XLPE Insulated, PVC Sheathed 0,6/1 kV Power Cables
- XLPE Insulated, PVC Sheathed Armoured 0,6/1kV Power Cables
- XLPE Insulated, PVC Sheathed Cu. Screened 0,6/1kV Power Cables
- XLPE Insulated, HFFR/LZSH/LSOH Sheathed 0,6/1kV Power Cables
- XLPE Insulated, HFFR/LZSH/LSOH Sheathed Armoured 0,6/1kV Power Cables
- XLPE Insulated, HFFR/LZSH/LSOH Sheathed Cu. Screened 0,6/1 kV Power Cables
- MICAGLASS TAPE+ XLPE Insulated, 0,6/1kV Fire Resistant FE/180 Power Cables
- MICAGLASS TAPE+ XLPE Insulated, Armoured Fire Resistant FE/180 0,6/1kV Power Cables
- MICAGLASS TAPE+ XLPE Insulated, Cu. Screened Fire Resistant FE/180 0,6/1kV Power Cables

Medium Voltage Power Cables



- 5.8/10kV Single Core Medium Voltage Power Cables
- 5.8/10kV Three Cores Medium Voltage Power Cables
- 6.35/11kV Single Core Medium Voltage Power Cables
- 6.35/11kV Three Cores Medium Voltage Power Cables
- 8.7/15kV Single Core Medium Voltage Power Cables
- 8.7/15kV Three Cores Medium Voltage Power Cables
- 12/20kV Single Core Medium Voltage Power Cables
- 12/20kV Three Cores Medium Voltage Power Cables
- 18/30kV Single Core Medium Voltage Power Cables
- 18/30kV Three Cores Medium Voltage Power Cables
- 19/33kV Single Core Medium Voltage Power Cables
- 19/33kV Three Cores Medium Voltage Power Cables
- 20.3/35kV Single Core Medium Voltage Power Cables
- 20.3/35kV Three Cores Medium Voltage Power Cables
- 26/45kV Single Core Medium Voltage Power Cables
- 26/45kV Three Cores Medium Voltage Power Cables

Aerial Bundled Cables (ABC) & Aluminium Overhead Line Conductors



- Medium Voltage Underground Aluminium Cables up to 36kV
- 0,6/1kV Low Voltage Underground Aluminium Cables
- Medium Voltage Aerial Bundled Cables for Overhead Lines up to 36kV
- 0,6/1kV Aerial Bundled Cables (ABC)
- All Aluminium Conductor (AAC)
- All Aluminium Alloy Conductor (AAAC)
- Aluminium Clad Steel Wire Conductor (ACS)
- All Aluminium Conductor Steel Reinforced Conductor (AACSR)
- Aluminium Conductor Steel Reinforced (ACSR)
- Aluminium Clad Steel Reinforced Conductor (ACSR/AW)
- Optical Ground Wire (OPGW)
- Stay Wire

Industrial Rubber Cables



- EPR Insulated, EPR Sheathed, Flexible Cables
- *EPR Insulated, PUR Sheathed Flexible Cables*
- EPR Insulated, Textile Braided Flexible Cables
- *EPR or Equivalent Synthetic Elastomer Insulated, CSP or Equivalent Synthetic Elastomer Sheathed Flexible Cables*
- EPR or Equivalent Synthetic Elastomer Insulated and Sheathed Flexible Cables
- *PCP or Equivalent Synthetic Elastomer Sheathed Flexible Cables*
- PCP or Equivalent Synthetic Elastomer Sheathed Flexible Flat Cables
- *PCP or Equivalent Synthetic Elastomer Sheathed Screened Flexible Cables*
- Water Resistant PCP or Equivalent Synthetic Elastomer Sheathed Flexible Cables
- *Special Insulated Single Core Flexible Rubber Cables*
- *Special Insulated Single Core Flexible Halogen-free Cables*
- *Special Insulated Single Core Flexible Halogen-free Cables*
- Cross-Linked Insulated, Low Smoke Emission and Halogen-free Flexible Cables
- *Arc Welding Cables*
- Flexible Cables for Photovoltaic Systems
- *Heat Resistant HEPR Unscreened Power Cables*
- Heat Resistant HEPR Screened Power Cables
- *Low Temperature Resistant EPR or Equivalent Synthetic Elastomer Insulated and Sheathed Flexible Cables*
- Flexible Rubber Cables with Supporting Element
- SJOOW
- SOOW

Mining Cables (Low Voltage)



- (N)TSWÖU-J Trailing Cables Acc. DIN/VDE
- (N)SSHÖU Cables Acc. DIN/VDE
- (N)SSHCGEWÖU-V Coal Cutter Cables Acc. DIN/VDE
- (N)SSHCGEWÖU Lighting Cables Acc. DIN/VDE
- TYPE 7 Cables Acc. BS 6708
- TYPE 7M Acc. BS 6708
- TYPE 7S Cables Acc. BS 6708
- TYPE 11 Cables Acc. BS 6708
- TYPE 14 Cables Acc. BS 6708
- TYPE 16 Cables Acc. BS 6708

Mining Cables (Low Voltage)



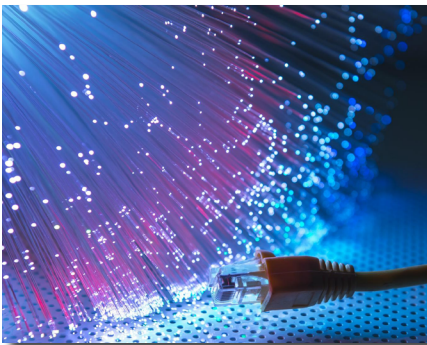
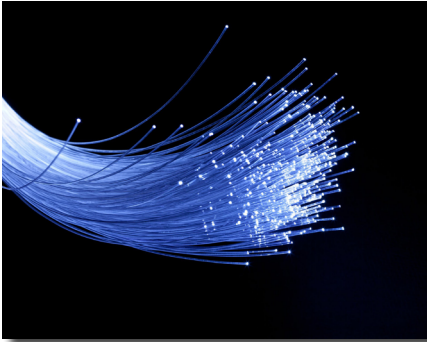
- TYPE FS4 Cables Acc. BS 6708
- TYPE 20, TYPE 21 Cables Acc. BS 6708
- TYPE 62, TYPE 63, TYPE 64 Cables Acc. BS 6708
- TYPE 70, TYPE 71 Cables Acc. BS 6708
- TYPE 201 Cables Acc. BS 6708
- TYPE 211 Cables Acc. BS 6708
- TYPE 506-512-518-524 Cables Acc. BS 6708
- TYPE 44 Hand Drilling Machine Cables Acc. BS 6708
- TYPE 43 Hand Drilling Machine Cables Acc. BS 6708
- TYPE 240 Cables Acc. AS/NZS 1802
- TYPE 241 Cables Acc. AS/NZS 1802
- TYPE 241 Superflex Cables Acc. AS/NZS 1802
- TYPE 245 Cables Acc. AS/NZS 1802
- TYPE 260 Cables Acc. AS/NZS 1802
- TYPE 275 Cables Acc. AS/NZS 1802
- TYPE 409 Cables Acc. AS/NZS 2802
- TYPE 412 Cables Acc. AS/NZS 2802
- TYPE 440 Cables Acc. AS/NZS 2802
- TYPE 441.1 Cables Acc. AS/NZS 2802

Mining Cables (Medium Voltage)



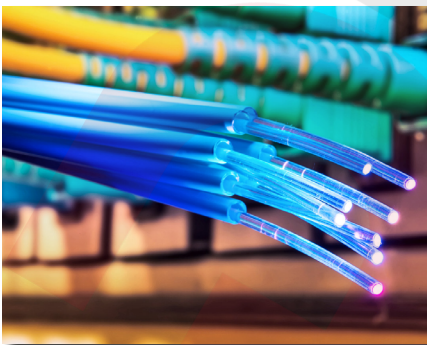
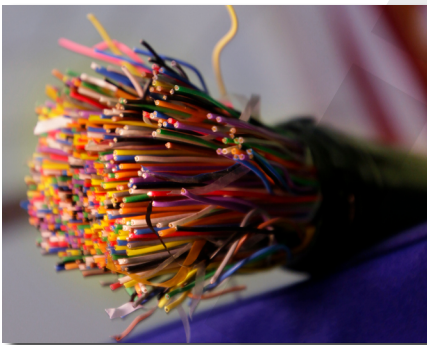
- (N)TSCGEWÖU (SB) Trailing Cables Acc. DIN/VDE
- (N)TSCGEWÖU (SMK) Trailing Cables Acc. DIN/VDE
- Flexible Power Cables for Coal Mines Acc. DIN/VDE
- TYPE 321 Acc. BS 6708
- TYPE 331 Cables Acc. BS 6708
- TYPE 621 Acc. BS 6708
- TYPE 630 - 631 Cables Acc. BS 6708
- TYPE 730 Acc. BS 6708
- TYPE 830 Cables Acc. BS 6708
- TYPE 307 Acc. BS 6708
- TYPE 307M Cables Acc. BS 6708
- TYPE 307S Acc. BS 6708
- TYPE 209 Cables Acc. AS/NZS 1802
- TYPE 241 Acc. AS/NZS 1802
- TYPE 241 SUPERFLEX Cables Acc. AS/NZS 1802
- TYPE 245 Cables Acc. AS/NZS 1802
- TYPE 260 From Cables Acc. AS/NZS 1802
- TYPE 409 Cables Acc. AS/NZS 2802
- TYPE 440 From Cables Acc. AS/NZS 2802
- TYPE 441 (Class 1) Cables Acc. AS/NZS 2802
- TYPE 450 Cables Acc. AS/NZS 2802
- TYPE 455 Cables Acc. AS/NZS 2802

Fiber Optic & Telecommunication Cables



- Single Loose Tube, Non-metallic Armour Fiber Optic Cable
- *Single Loose Tube, Non-metallic Armour Aerial Fiber Optic Cable*
- Single Loose Tube, Non-Metallic Armour Fiber Optic Cable with Stranded Copper
- *Single Loose Tube, Metallic corrugated Steel Tape Armour Fiber Optic Cable*
- Single Loose Tube Corrugated Steel Tape Armour Aerial Fiber Optic Cable
- *Single Loose Tube Corrugated Steel Tape Armour Horizontally Laid Steel Wire in the Outer Jacket Fiber Optic Cable*
- Single Loose Tube Corrugated Steel Tape Armour Fire Resistant Fiber Optic Cable
- *Multi Loose Tube, Non-metallic Armour Fiber Optic Cable*
- Multi Loose Tube, Non-Metallic Armour with Stranded Copper Fiber Optic Cable
- *Multi Loose Tube, Non-metallic Armour Aerial Fiber Optic Cable*
- Multi Loose Tube, Non-metallic Armour, Light All-Dielectric Self-Supporting Fiber Optic Cable
- *Multi Loose Tube, Non-metallic Armour Stranded Copper Composite Cable*
- Multi Loose Tube, Corrugated Steel Tape Armour Fiber Optic Cable
- *Multi Loose Tube, Corrugated Steel Tape Armour, Aerial Fiber Optic Cable*
- Multi Loose Tube, Double Galvanized Steel Tape Armour Fiber Optic Cable
- *Multi Loose Tube, Double Galvanized Steel Tape Armour Fire Resistant Fiber Optic Cable*
- Multi Loose Tube, Corrugated Steel Tape Armour, Fire Resistant Fiber Optic Cable
- *Mini, Single Loose Tube, Non-metallic Armour Fiber Optic Cable*
- Microduct, Single Loose Tube, Non-metallic Armour Fiber Optic Cable

Fiber Optic & Telecommunication Cables



- Microduct, Multi Loose Tube Fiber Optic Cable
- *Simplex Zipcord*
- Duplex Zipcord
- *Indoor Distribution Cable*
- Outdoor Distribution Cable
- *Drop Cable*
- Drop Aerial Cable
- PDV / J-2YY
- PDH / J-2YH
- VBV / J-YY
- HBH / J-HH
- PD-APV / JE-02YS(St)Y
- PD-APH / JE-02YS(St)H
- VB-APV / JE-Y(St)Y
- HB-APH / JE-H(St)H
- *Jumper Wire*
- J-Y(St)Y Lg
- J-H(St)H Lg
- KPD-AP / A-02YS(L)2Y
- PD-AP / A-2Y(L)2Y
- KPD-AP-A / A-02YS(L)T2Y
- PD-AP-A / A-2Y(L)T2Y
- KPD-PAP / A-02YS2Y(L)2Y / A-2Y2Y(L)2Y
- KPD-P-A / PD-P-A / A-02YST2Y / A-2YT2Y
- KPD-HAH / A-02YSH(L)H
- KPDP-AP / A-02YSF(L)2Y
- PDF-AP / A-2YF(L)2Y
- KPDP-AP-A / A-02YSF(L)T2Y
- PDF-AP-A / A-2YF(L)T2Y
- *Drop Wire Aerial*
- KPDP-PAP / PDF-PAPE / A-02YSF2Y(L)2Y / A-2YF2Y(L)2Y
- *Drop Wire*
- KPDP-PABP / A-02YSF(L)2YB2Y
- KPDP-PAbP / PDF-PAbP / A-02YSF(L)2Yb2Y / A-2YF2Y(L)b2Y
- J-H(St)H FE 180

Instrumentation / Control Cables



- PVC Insulated, PVC Sheathed Overall Screened, Multi Core Instrumentation Cable
- *PVC Insulated, PVC Sheathed Overall Screened, Multi Pair Instrumentation Cable*
- PE Insulated, PVC Sheathed Overall Screened, Multi Core Instrumentation Cable
- *PE Insulated, PVC Sheathed Overall Screened, Multi Pair Instrumentation Cable*



- PE Insulated, LSZH Sheathed Overall Screened, Multi Pair Instrumentation Cable
- *PE Insulated, LSZH Sheathed Overall Screened, Multi Core Instrumentation Cable*
- XLPE Insulated, PVC Sheathed Overall Screened, Multi Pair Instrumentation Cable
- *XLPE Insulated, PVC Sheathed Overall Screened, Multi Core Instrumentation Cable*



- XLPE Insulated, LSZH Sheathed Overall Screened, Multi Pair Instrumentation Cable
- *MGT+XLPE Insulated, LSZH Sheathed Overall Screened, Multi Core Fire Resistant Instrumentation Cable*
- *MGT+XLPE Insulated, LSZH Sheathed Overall Screened, Multi Pair Fire Resistant*



- *Instrumentation Cable Silicone Insulated, LSZH Sheathed Overall Screened, Multi Core Fire Resistant Instrumentation Cable*
- Silicone Insulated, LSZH Sheathed Overall Screened, Multi Pair Fire Resistant Instrumentation Cable
- *PVC Insulated, PVC Sheathed, Overall Screened, Steel Wire Armoured Multi Core Instrumentation Cable*
- PVC Insulated, PVC Sheathed Overall Screened, Steel Wire Armoured Multi Pair Instrumentation Cable
- *PVC Insulated, PVC Sheathed Overall Screened, Wire Braid Armoured Multi Pair Instrumentation Cable*

Instrumentation / Control Cables



- PE Insulated, LSZH Sheathed Overall Screened, Steel Wire Armoured Multi Core Instrumentation Cable
- PE Insulated, LSZH Sheathed Overall Screened, Steel Wire Armoured Multi Pair Instrumentation Cable
- *XLPE Insulated, PVC Sheathed, Overall Screened, Steel Wire Armoured Multi Core Instrumentation Cable*
- XLPE Insulated, PVC Sheathed Overall Screened, Steel Wire Armoured Multi Pair Instrumentation Cable



- *XLPE Insulated, LSZH Sheathed, Overall Screened, Steel Wire Armoured Multi Core Instrumentation Cable*
- XLPE Insulated, LSZH Sheathed, Overall Screened, Steel Wire Armoured Multi Pair Instrumentation Cable
- *MGT+XLPE Insulated, LSZH Sheathed, Overall Screened, Steel Wire Armoured Multi Core Fire Resistant Instrumentation Cable*
- MGT+XLPE Insulated, LSZH Sheathed, Overall Screened, Steel Wire Armoured Multi Pair Fire Resistant Instrumentation Cable



- *Silicone Insulated, LSZH Sheathed, Overall Screened, Steel Wire Armoured Multi Core Fire Resistant Instrumentation Cable*
- Silicone Insulated, LSZH Sheathed, Overall Screened, Steel Wire Armoured Multi Pair Instrumentation Cable
- *XLPE or PE Insulated, LSZH Sheathed Overall Screened, Steel Wire Armoured Chemical and Moisture Protection Multi Pair Instrumentation Cable*



- PE Insulated, PVC Sheathed, Overall Screened, Steel Wire Armoured Multi Core Instrumentation Cable
- *PE Insulated, PVC Sheathed Overall Screened, Steel Wire Armoured Multi Pair Instrumentation Cable*
- PE Insulated, PVC Sheathed Overall Screened, Wire Braid Armoured Multi Pair Instrumentation Cable

Marine Cables



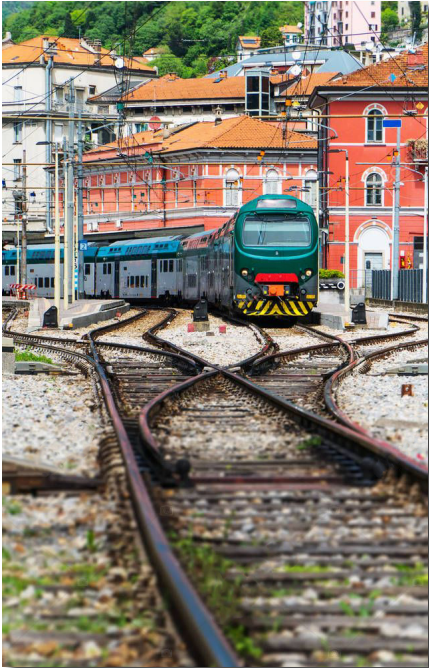
- M2X
- L-M2X
- M2XH (FI)
- M2XH (NOFI)
- M2XCH (FI)
- M2XCH (NOFI)
- M2XH SECTOR (SmF)
- M2XCH SECTOR (SmF)
- M2XH-FFR SECTOR (SmF)
- M2XCH-FFR SECTOR (SmF)
- M2XH-FFR (FI)
- M2XH-FFR (NOFI)
- M2XCH-FFR (FI)
- M2XCH-FFR (NOFI)
- M2XSH
- MVCECH 3.6/6 kV
- MVCECH 6/10 kV
- MVCECH 8.7/15 kV
- MVCECH 12/20 kV
- M2XCH-VFD (1,8/3 kV)
- M2XCH-VFD (0,6/1 kV)
- M2XCH-EMC (1,8/3 kV)
- M2XCH - EMC (0,6/1 kV)
- FM2XH MULTI CORE
- FM2XAH
- FM2XAAH
- FM2XCH-FFR
- FM2XCCH-FFR
- FM2XAH-FFR
- FM2XAAH-FFRx

Offshore Cables



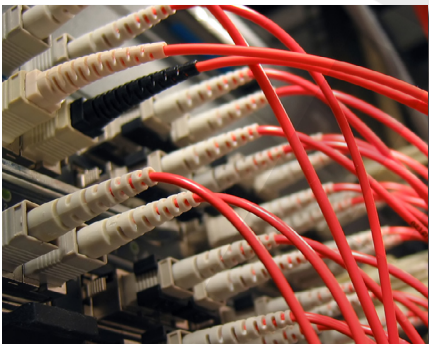
- **Offshore Cables acc. to NEK 606 Standard**
 - RFOU TYPE P1/P8 0,6/1 kV
 - BFOU TYPE P5/P12 0,6/1 kV
 - RU TYPE P18 0,6/1 kV
 - BU TYPE P17 0,6/1 kV
 - RFCU 0,6/1 kV
 - BFCU 0,6/1 kV
 - RFOU (I) TYPE S1/S5 250 V
 - RFOU (C) TYPE S2/S6 250 V
 - BFOU (I) TYPE S3/S7 250 V
 - BFOU (C) TYPE S4/S8 250 V
 - RU (I) TYPE S11 250 V
 - RU (C) TYPE S12 250 V
 - BU (I) TYPE S13 250V
 - BU (C) TYPE S14 250V
 - RFCU (I) 250 V
 - RFCU (C) 250 V
 - BFCU (I) 250 V
 - BFCU (C) 250 V
 - RU (I+C) 250 V
 - BU (I+C) 250 V
 - RFOU VFD 0,6/1 kV
- **Offshore Cables acc. to BS 6883, BS 7917 Standard**
 - U-8RW4
 - U-8RW4FR
 - U-8RW4FRG
 - U-8RW4FRGT (C)
 - U-8RW4FRGT (I)
 - U-8RW4FRT (C)
 - U-8RW4FRT (I)
 - U-8RW4G
 - U-8RW4GT (C)
 - U-8RW4GT (I)
 - U-8RW4T (C)
 - U-8RW4T (I)

Railway Cables



- Shielded Railway Power Cables
- *Halogen Free Shielded Railway Power Cables*
- Screened and Shielded Railway Power Cables
- *Screened and Shielded Halogen Free Railway Power Cables*
- Screened and Aluminium Armoured Power and Signalling 1,8/3kV Cables
- *Halogen Free and Fire Resistance Screened Power and Signalling Cables*
- Railway Control and Signalling Cables
- *Railway Network Equipment Cables*
- Rolling Stock Cables
- *Screened Rolling Stock Cables*
- Fire Resistant Rolling Stock Cables
- *Fire Resistant Screened Rolling Stock Cables*
- Point Heating Cables

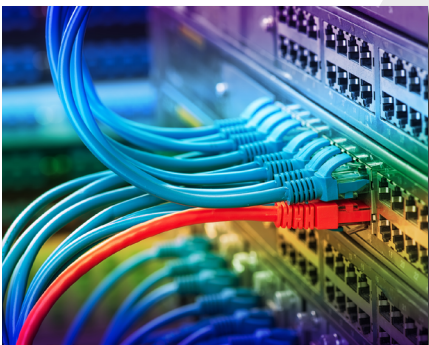
Data Cables



- Cat 3 U/UTP PVC
- *Cat 3 U/UTP LSOH*
- Cat 3 U/UTP PE
- *Cat 3 F/UTP PVC*
- *Cat 3 F/UTP LSOH*
- *Cat 3 F/UTP PE*
- Cat 5e U/UTP PVC
- *Cat 5e U/UTP LSOH*
- Cat 5e U/UTP PE
- *Cat 5e U/UTP Aerial PE*
- Cat 5e F/UTP PVC
- *Cat 5e F/UTP LSOH*
- Cat 5e F/UTP PE
- *Cat 5e F/UTP Aerial PE*
- Cat 5e S/UTP PVC
- *Cat 5e S/UTP LSOH*
- Cat 5e S/UTP PE
- *Cat 5e S/UTP Aerial PE*
- Cat 5e SF/UTP PVC
- *JE-2Y(St)C2Y xDSL*



Data Cables



- Cat 5e SF/UTP LSOH
- *Cat 5e SF/UTP PE*
- Cat 5e SF/UTP Aerial PE
- *Cat 6 U/UTP PVC*
- Cat 6 U/UTP LSOH
- *Cat 6 U/UTP PE*
- Cat 6 U/UTP Aerial PE
- *Cat 6 F/UTP PVC*
- Cat 6 F/UTP LSOH
- *Cat 6 F/UTP PE*
- Cat 6 F/UTP Aerial PE
- *Cat 6 S/UTP PVC*
- Cat 6 S/UTP LSOH
- *Cat 6 S/UTP PE*
- Cat 6 S/U TP Aerial PE
- *Cat 6 SF/UTP PVC*
- Cat 6 SF/UTP LSOH
- *Cat 6 SF/UTP PE*
- Cat 6 SF/UTP Aerial PE
- *JE-2Y(St)Y xDSL*
- *JE-2Y(St)CY xDSL*
- *JE-2Y(St)H xDSL*
- *JE-2Y(St)CH xDSL*
- *JE-2Y(St)2Y xDSL*

Signal Cables

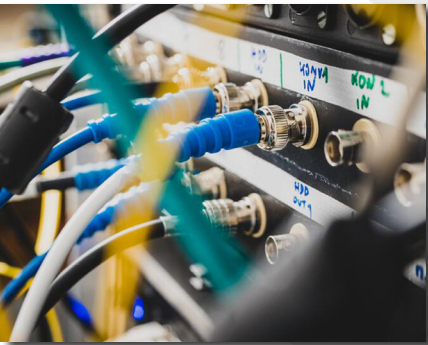


- LIYY
- *LIYY-TP*
- LIYCY
- *LIYCY-TP*
- LIYCYv-TP
- *LIY(St)Y*
- *LIY(St)Y-TP*
- *LIY(St)Y-PiMF*

Signal Cables



- *LIYCY-CY*
- *LI2YCY*
- *LI2YCY-TP*
- *LI2YCYv-TP*
- *LI2Y(St)Y*
- *LI2Y(St)Y-PiMF*
- *LI2Y(St)CY*
- *LI2Y(St)CY-PiMF*
- *LIHH*
- *LIHH-TP*
- *LIHCH*
- *LIHCH-TP*
- *LIH(St)H*
- *LIH(St)H-TP*
- *LIH(St)CH*
- *LIH(St)CH-TP*
- *LIH(St)CH-PiMF*
- *LI2YCH-TP*
- *LI2Y(St)CH*

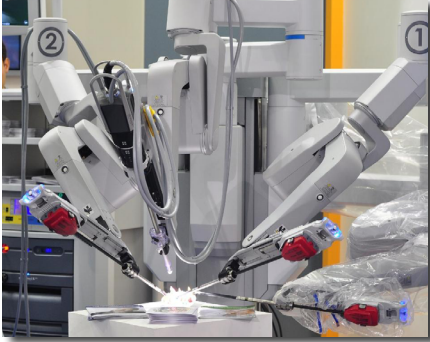


Fire Resistant Silicon Power Cables



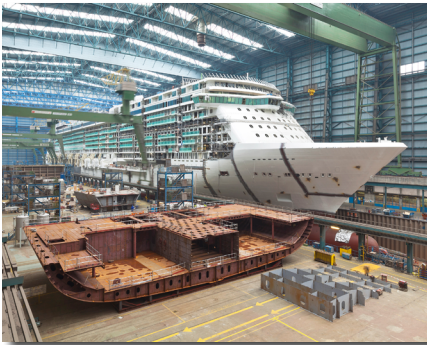
- *SIMH-O*
- *SIMH-O FE 180/PH 15..120*
- *SIMH-GL*
- *SIMH-EWKF*
- *SIMH-PVC*
- *SIMH-GL/P*
- *SIAF/Z*

Heat Resistant Silicon Cables



- THT
- SHT
- HTS (EWKF)
- N2GFAF VDE HB-SIL
- HTS-PT (EWKF-PT)
- H03S-K
- H05S-K
- H05S-U
- H05SS-K
- H05SS-U
- H05SJ-K
- H05SJ-U
- H05SS-F
- H05SSD3-K
- H05SST-F
- H05SSD3T-K
- SID/UG4/2
- SIAF
- BSC-IDC
- SID-GL
- SIF-GL
- SIF-PUR F CLASS
- SIF-AR
- SCSK
- FG4G4
- UG4G4
- SIHF/SIMH
- SIFCuSI
- SIHFCuSI
- SIHF-GL
- SIHF-P
- SIHF-GL-P
- NLÖ-BT

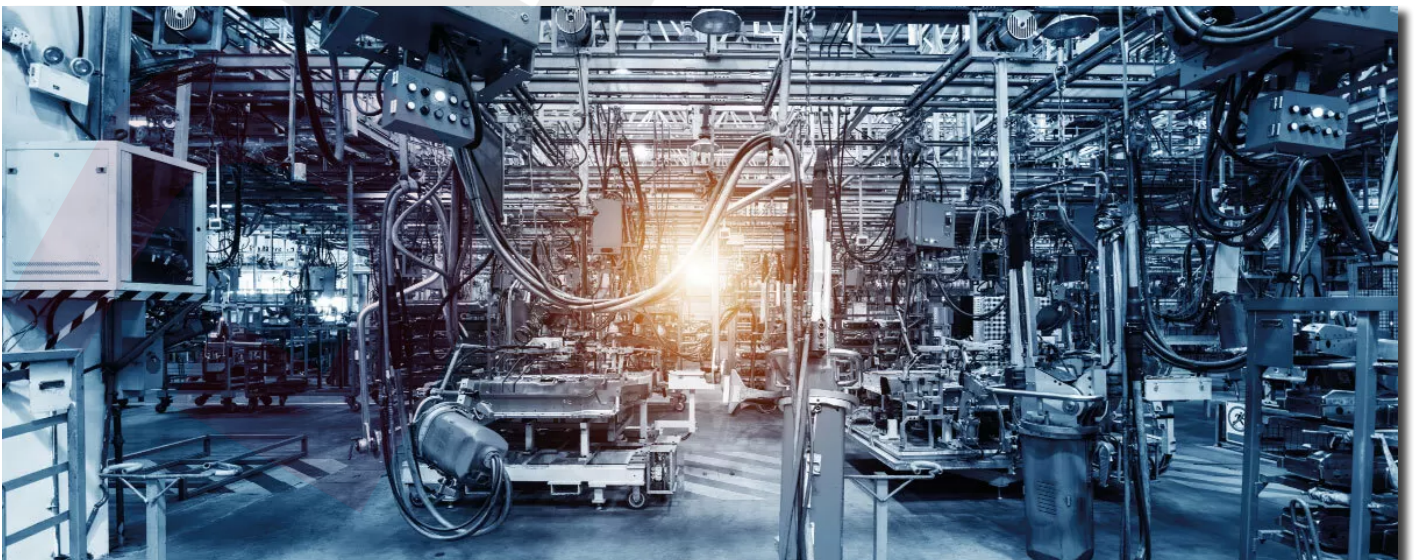
UL CUL AWM Type Silicon Cables



- 3135F BC-SIL
- 3135S BC-SIL
- 3512F BC-SIL
- 3512S BC-SIL
- 3512FG BC-SIL
- 3512SG BC-SIL
- 3530F BC-SIL
- 3530S BC-SIL
- 3529F BC-SIL
- 3529S BC-SIL
- 3071F BC-SIL
- 3071S BC-SIL
- 3513F BC-SIL
- 3513S BC-SIL
- 3535F BC-SIL
- 3535S BC-SIL
- 3644F BC-SIL
- 3644S BC-SIL
- 3645F BC-SIL
- 3645S BC-SIL
- 4389 BC-SIL



UL CUL AWM Type Silicon Cables



- *3661 BC-MVSIL*
- *3662 BC-MVSIL*
- *3663 BC-MVSIL*
- *3664 BC-MVSIL*
- *1007F BC-PVC*
- *1007S BC-PVC*
- *1569F BC-PVC*
- *1569S BC-PVC*
- *1015F BC-PVC*
- *1015S BC-PVC*
- *1061F BC-PVC*
- *1061S BC-PVC*
- *2464 BC-PVC*
- *3266F BC-XLPE*
- *3266S BC-XLPE*
- *3271F BC-XLPE*
- *3271S BC-XLPE*
- *3398F BC-XLPE*
- *3398S BC-XLPE*
- *3321F BC-XLPE*
- *3321S BC-XLPE*



MEDIUM VOLTAGE DISTRIBUTION SYSTEMS & ENERGY AUTOMATION

The term “medium voltage” is used for distribution systems with voltages above 1kV and generally applied up to and including 52kV*. Substations, switchgear, switchgear accessories, and disconnectors are the components of medium voltage distribution systems. The substation is a compact enclosure consisting of medium voltage switchgear, a transformer, and a low voltage switchboard located in three separate compartments which are segregated from each other using partitions in order to ensure employees safety.



- METAL CLAD SWITCHGEAR
- AIR INSULATED MODULAR METAL SWITCHGEAR
- SF6 GAS INSULATED RING MAIN UNITS (RMU)
- MEDIUM VOLTAGE SWITCHGEAR ACCESSORIES
- MEDIUM VOLTAGE DISCONNECTORS
- METAL COMPACT SUBSTATIONS
- CONCRETE COMPACT SUBSTATIONS
- UNDERGROUND COMPACT SUBSTATIONS
- PREFABRICATED COMPACT SUBSTATIONS
- MOBILE COMPACT SUBSTATIONS

Compact Substations



- Metal Compact Substations
- *Concrete Compact Substations*
- Underground Compact Substations
- *Prefabricated Compact Substations*
- Mobile Compact Substations

Medium Voltage Switchgear



- Air Insulated Metal Clad MV Switchgear
- *Gas Insulated Metal Clad MV Switchgear*
- Air Insulated Modular Metal Switchgear
- *Compact(Non-Extensible) Type RMU*
- *Modular(Extensible) Type RMU*

Medium Voltage Switchgear Accessories & Disconnectors



- *Indoor Type Switch Disconnecter with Earthing*
- *Indoor Type Switch Disconnecter without Earthing*
- *Outdoor Fuse Type Switch Disconnecter with Earthing*
- *Outdoor Fuse Type Switch Disconnecter without Earthing*
- *Outdoor Type Switch Disconnecter with Earthing*
- *Outdoor Type Switch Disconnecter without Earthing*
- *Circuit Breakers*
- *Vacuum Circuit Breakers*
- *SF6 Gas Insulated Load Break Switches (Earth Blade)*
- *Gas Separators*
- *Air Insulated Rotary Separators*
- *Earthing Disconnectors*
- *Cable Terminations*
- *Indoor Fuse Type Switch Disconnecter with Earthing*
- *Indoor Fuse Type Switch Disconnecter without Earthing*



TRANSFORMERS

A transformer is an electrical device that uses the principle of electromagnetic induction to transfer energy from one electric circuit to another. It is designed to either increase or decrease AC voltage between the circuits while maintaining the frequency of the current. Transformers do this with no conductive connection between the two circuits. This is possible through the application of Faraday's Law of Induction which describes how a magnetic field will interact with an electric circuit to produce electromotive force (EMF). A transformer is a passive component that transfers electrical energy from one circuit to another, or from multiple circuits. A changing current in any transformer coil causes a changing magnetic flux in the transformer's core, which induces a changing electromotive force across any other coils wound around the same core. Without a metallic (conductive) connection between the two circuits, electrical energy can be transferred between separate coils.

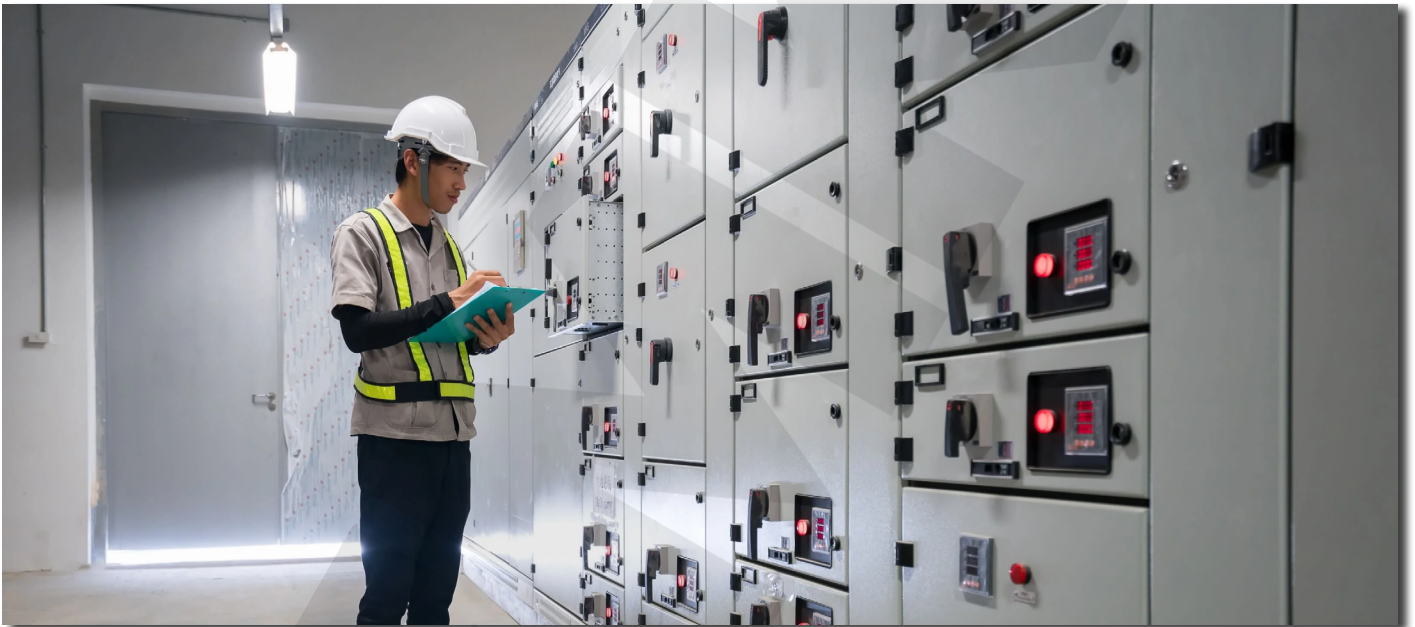


- POWER TRANSFORMERS
- *DRY TYPE TRANSFORMER*
- HERMETIC TYPE DISTRIBUTION TRANSFORMER
- *DISTRIBUTION TRANSFORMER with CONSERVATOR TANK*
- BOX TYPE DISTRIBUTION TRANSFORMER
- *FURNACE TRANSFORMER*
- MARINE TYPE TRANSFORMER
- *EARTHING TRANSFORMER*
- CONVERTER TRANSFORMER
- *SHUNT REACTOR*
- MCR (MAGNETIC CONTROLLED REACTOR)
- *NER (NEUTRAL EARTHING RESISTOR)*
- AUTO TRANSFORMER



LOW VOLTAGE DISTRIBUTION SYSTEMS & ENERGY AUTOMATION

The low voltage distribution system is a component of the electrical power distribution network that transports electricity from the distribution transformer to the consumer's energy meter. A low voltage panel is an electrical distribution system component that separates an electrical power feed into branch circuits while also providing a protective fuse or circuit breaker for each circuit in a single enclosure. Panelboards are used to distribute electricity throughout a building or facility while protecting against electrical overloads and short circuits.



- MAIN DISTRIBUTION BOARDS
- *SUB DISTRIBUTION BOARDS*
- POWER FACTOR CORRECTION BANKS (PFC)
- *AUTOMATIC TRANSFER SWITCH PANELS (ATS)*
- EASY(WAY) PANEL BOARDS
- *SYNCHRONIZATION PANEL BOARDS*
- MOTOR CONTROL CENTER PANELS (MCC)
- *METERING BOXES*
- CONTROL & AUTOMATION PANELS
- *MONO BLOCK ELECTRICAL PANELS*
- EX-PROOF PANELS

Low Voltage Panels



- **Main Distribution Boards**
 - Free Standing Indoor Type Modular Panels
 - Free Standing Outdoor Type Modular Panels

- **Sub Distribution Boards**

- *Free Standing Indoor Type Modular Panels*
- *Free Standing Outdoor Type Modular Panels*
- *Wall Mounted Type Modular Panels*
 - *Surface Mounted Type*
 - *Flush Mounted Type*



- **Power Factor Correction Banks (PFC)**

- PFC Bank with Harmonic Filter Protection
- PFC Bank without Harmonic Filter Protection
- PFC Bank with Shunt Reactor Protection



- **Automatic Transfer Switch Panels (ATS)**

- *Change-over Switches*
- *Breaker Type Switches (MCCB or ACB)*
- *Parallel Operating*
- *Bypass Operating*

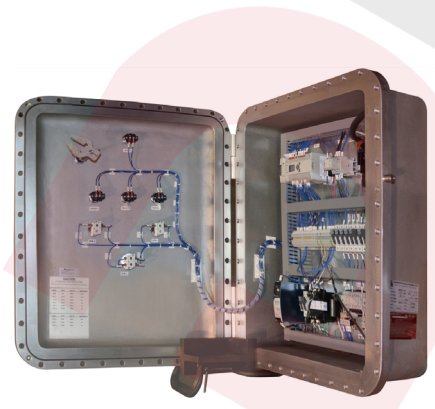
- **Easy(Way) Panel Boards**

- **Synchronization Panel Boards**

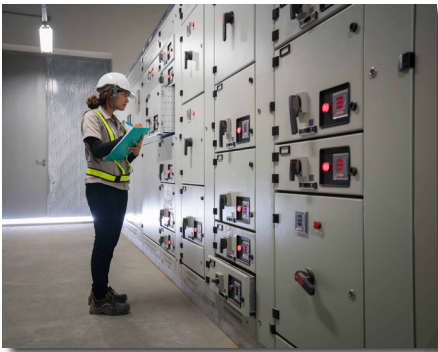
- **Mono Block Electrical Panels**

- **Ex-proof Panels**

- *Stainless Steel Panels*
- *Aluminium Casting Panels*
- *Fibreglass Reinforced Polyester (FRP)*



Low Voltage Panels



- **Motor Control Center Panels (MCC)**
 - Fixed Type
 - Direct On-line
 - Star/Delta
 - Soft Starter Unit
 - Variable Speed Drive
 - Auto Transformers
 - Draw-out Type
 - Direct On-line
 - Star/Delta
 - Feeder
- **Metering Boxes**
 - *Free Standing Indoor Type Panel*
 - *Free Standing Outdoor Type Panel*
 - *Surface Mounted Indoor Type Panel*
 - *Surface Mounted Outdoor Type Panel*
 - *Flush Mounted Indoor Type Panel*
- **Control & Automation Panels**
 - Programmable Logic Controller (PLC Panel)
 - Scada / RTU Panel (Scada / Remote Terminal Unit)
 - Automation Control Centers (ACS)
 - HV / MV Secondary Protection & Control Panel
- **Other special designed products according to customers' projects or needs**



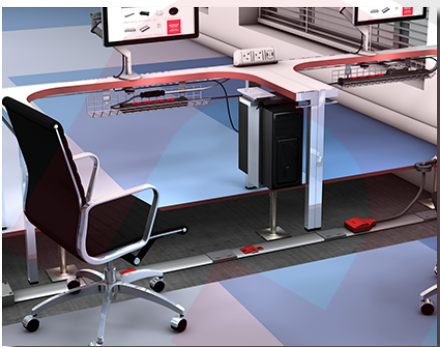
BUSBAR ENERGY TRANSMISSION & DISTRIBUTION SYSTEMS

Busbar Trunking System is an electric power distribution system that uses copper or aluminium busbar with appropriate enclosures and adequate protection to prevent the cables from being damaged by foreign objects. Busbars are quickly becoming indispensable due to their ease and safety. They're also utilized to connect high-voltage equipment and low-voltage equipment in battery banks at electrical switchyards. They are usually uninsulated and sturdy enough to withstand being supported in the air by insulated pillars. These features allow for adequate conductor cooling and the ability to tap in at numerous spots without having to create a new junction.



- MEDIUM VOLTAGE BUSBAR SYSTEMS
- *BUSBAR ENERGY DISTRIBUTION SYSTEM for POWER APPLICATIONS*
- CAST RESIN BUSBAR TRUNKING SYSTEMS
- *BUSBAR TRUNKING SYSTEMS for MEDIUM-SIZED BUILDINGS & INDUSTRIAL FACILITIES*
- LOW VOLTAGE BUSBAR TRUNKING SYSTEMS
- *LIGHTING BUSBAR TRUNKING SYSTEMS*
- TROLLEY BUSBAR SYSTEMS
- *UNDERFLOOR BUSBAR TRUNKING SYSTEMS*
- BUSBAR SYSTEMS CONNECTION MODULES

Busbar Energy Transmission & Distribution Systems



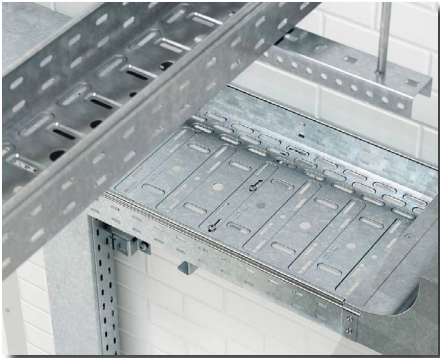
- **Medium Voltage Busbar Systems (12kV&24kV&36kV)**
- **Busbar Energy Distribution System for Power Applications**
 - Plug-in type (Standard 2 plug-in outlets on both sides of the 3m enclosure)
 - Bolt-on type (outlets only at joint)
 - Plug-in window number can be increased optionally
 - For aluminium conductors 1000A and above, for copper conductors 1250A and above bus bar range have plug-in Windows at both sides
 - Protection Degree (IP55 standard and IP67 optional)
 - Requires less space in comparison to cable systems
- **Cast Resin Busbar Trunking Systems**
- **Lighting Busbar Trunking Systems**
- **Trolley Busbar Trunking Systems**
- **Underfloor Busbar Trunking Systems**
 - 13A, 16A, 32A tap-off plugs (with MCB or empty)
 - For 32A used tap-off box included)
- **Busbar Trunking Systems For Medium-Sized Buildings & Industrial Facilities**
 - *Three-phase tap off boxes with DIN mounted MCB up to 40A or 80A (empty or fuse included)*
 - *Tap off boxes with SYK switch fuse up to 160A, 250A and 400A (excluding fuses)*
 - *Tap off boxes with MCCB (moulded case circuit breaker) with current ratings up to 160A, 250A and 400A*
 - *Special design data center tap off boxes*
- **Low Voltage Busbar Trunking Systems**
 - Three-phase tap-off boxes with DIN mounted fuse holders (10×38 mm) up to 16A, 40A or 80A (empty or fuse included)
 - Three phase output boxes with 63A D02 plug fuse (empty or fuse included)
 - Tap off boxes with MCB (miniature circuit breaker) rated up to 16A (empty or including the circuit breaker)
 - 80A special Design Data Centre Tap-off boxes
- **Busbar Systems Connection Modules**
 - *Rotation Modules*
 - *Expansion (dilation) modules*
 - *Reduction and T connection modules*
 - *Standard modules*
 - *Panel and Transformer connection modules*
 - *Flexible connection elements*
 - *Feeder Box*

CABLE TRAYS, CABLE LADDERS CABLE SUPPORT SYSTEMS & CABLE CONDUITS

A cable tray system is used in building electrical wiring to support insulated electrical wires used for power distribution, control, and communication. Cable trays are often used for cable management in commercial and industrial construction as an alternative to open wiring or electrical conduit systems. They're particularly handy in instances where alterations to a wiring system are expected, because new cables can be laid in the tray rather than pulled through a pipe.

- CABLE TRAYS
- CABLE LADDERS
- CABLE SUPPORT SYSTEMS
- CABLE CONDUITS

Cable Trays



- Standard Type Cable Trays
- *Heavy duty Type Cable Trays*
- Strengthened Type Cable Trays
- *Marine Type and Lighting Fixture Type Cable Trays*
- Click Fit Type Cable Trays
- *Wire Mesh Cable Trays*

Cable Ladders



- Cable Ladders With C-Profile Rung
 - Cable Ladder Cover
 - Coupler
 - Adjustable Coupler
 - Horizontal Bends 45°
 - Horizontal Bends 90°
 - Reducer
 - Tee Bend
 - Crossing Elements
 - Inside Vertical Bend
 - Outside Vertical Bend
 - End Cap
 - Separator



Cable Ladders

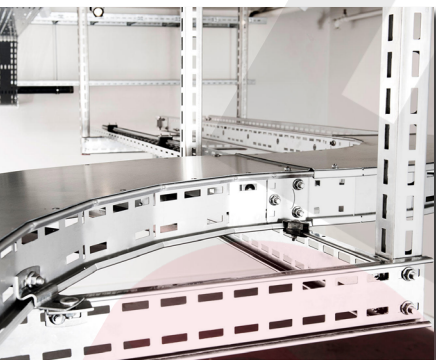


- **Heavy Duty Type Cable Ladders**

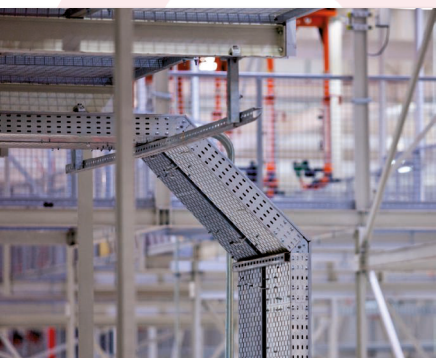
- *Cable Ladder Cover*
- *Coupler*
- *Adjustable Coupler*
- *Horizontal Bends 45°*
- *Horizontal Bends 90°*
- *Reducer*
- *Tee Bend*
- *Crossing Elements*
- *Inside Vertical Bend*
- *Outside Vertical Bend*
- *End Cap*
- *Separator*



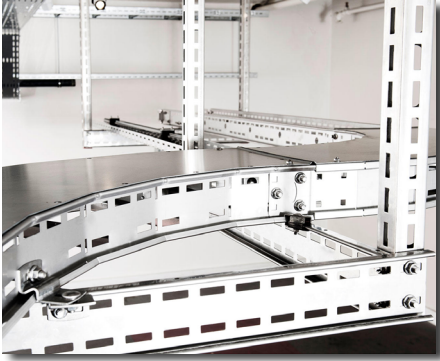
Cable Support Systems



- **Wall Brackets (Unwelded)**
- **Wall Brackets (Welded)**
- **L-C-U-Z Profiles**
- **Other special designed products according to customers' projects or needs**



Cable Support Systems

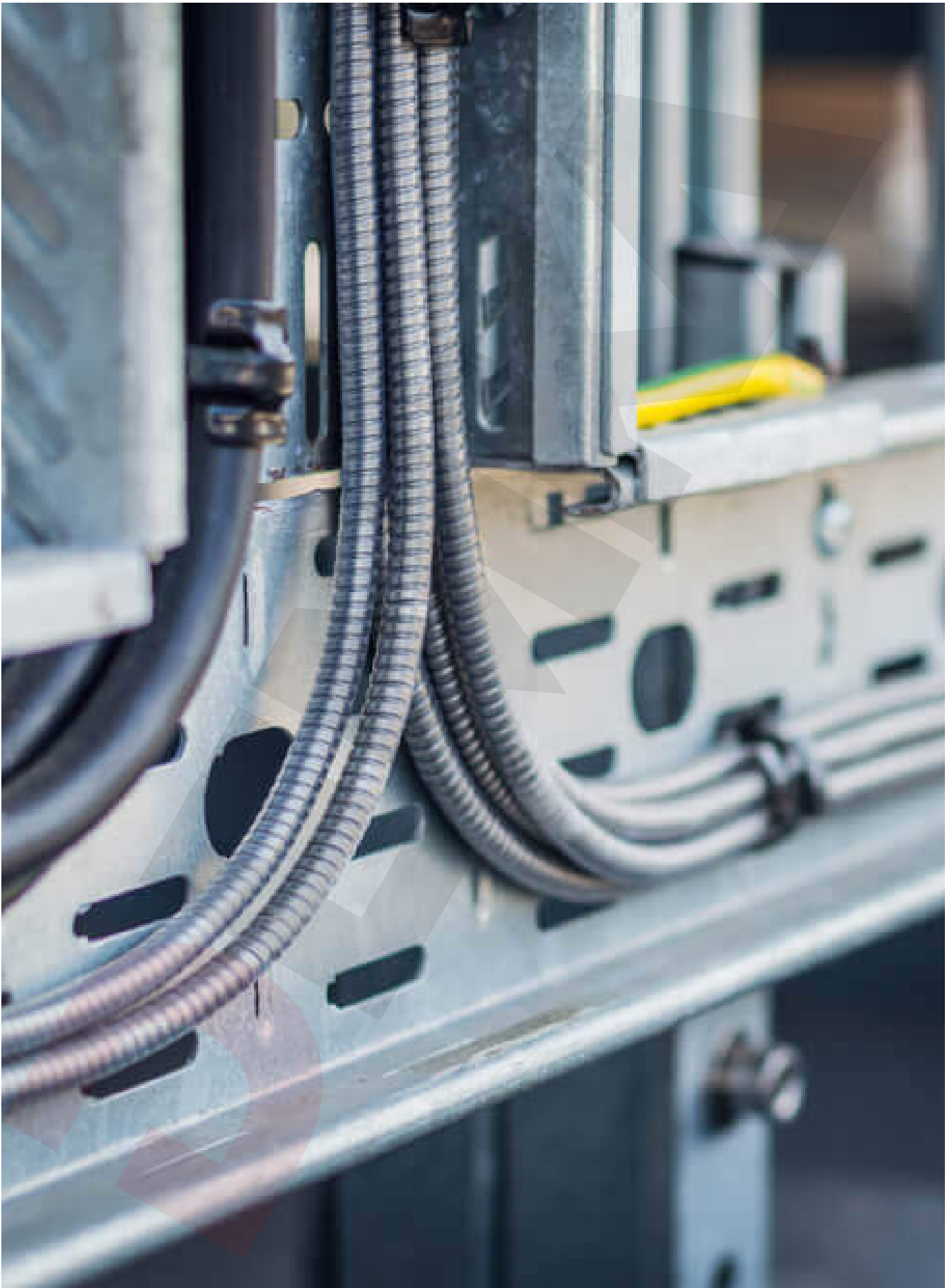


- **Connection Units**
 - *L Profile Mounting Unit*
 - *L Profile Support*
 - *Tray Supports For Threaded Rods*
 - *Ceiling Mounting Fittings*
 - *U Profile Joint Element*
 - *U Profile Brackets*
 - *45 Degree Angle Channel Bracket*
 - *90 Degree Angle Channel Bracket*
 - *Base Plates*
 - *Beam Clamp*
 - *Channel Accessories*
 - *Window Bracket*
 - *Channel Nuts*
 - *Internal Splice*
 - *External Splice*
 - *Flat Gusset Tee*
 - *Flat Plates*
 - *PVC End Cap*
 - *Special Fittings*
 - *Channel Closure Strips*

Cable Conduits



- **Galvanized Steel Conduits**
- **PVC Conduits**
- **Cable Conduits Connection Units**
- **Other special designed products according to customers' projects or needs**



LIGHTING POLES ENERGY TRANSMISSION LINE TOWERS & OTHER STEEL STRUCTURES

Lighting poles and other steel structures can be used almost everywhere such as boulevards, streets, and highways, bridges and pedestrian crossings, parking lots and shopping centers, parks and gardens, airports, ports, shipyards, factories, heavy-industry zones, concert, and rally areas, stations and terminals, historical and tourism Areas, stadiums and other sports facilities special areas requiring high security.



- LIGHTING POLES
- ENERGY TRANSMISSION TOWERS
- TRAFFIC LIGHT & SIGN POLES
- CAMERA & CCTV POLES
- GUARDRAIL STRUCTURE SYSTEMS
- CATENARY (RAILWAY) STRUCTURE SYSTEMS
- STEEL SUPPORTING STRUCTURES



Lighting Poles



- Street Lighting Poles
- *Area Lighting Poles / High Masts*
- Park / Garden Lighting Poles
- *Hinged Type Poles*
- Stadium Lighting Poles
- *Decorative Lighting Poles*
- Lighting Poles with Solar Panel
- *Other special designed products according to customers' projects or needs*



Energy Transmission Towers



- Waist Type Towers
- *Double Circuit Towers*
- Guyed-V Towers
- *Tubular Steel Towers*
- Guyed Cross-Rope Suspension Towers
- *Lettuce Type Towers*
- Other special designed products according to customers' projects or needs

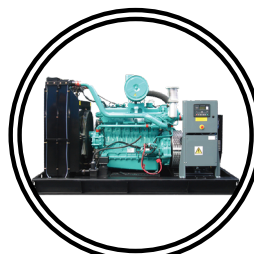
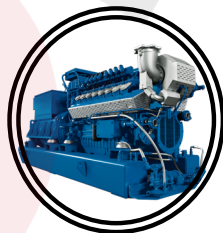


GENERATOR & ACCESSORIES

Generators are a device that converts mechanical energy into electrical energy, usually using electromagnetic induction. There are batteries that convert chemical energy into electrical energy, thermoelectric generators that convert heat energy into electrical energy, and photoelectric circuits that convert light energy into electrical energy.



- DIESEL GENERATORS
- *NATURAL GAS GENERATORS*
- COGENERATION & TRIGENERATION GENERATORS
- *MOBILE GENERATORS*
- MARINE GENERATORS
- BIO-GAS GENERATORS
- *MOBILE LIGHTING TOWER GENERATORS*
- SYNCHRONIZATION SYSTEMS for GENERATORS
- *CONTROL PANELS & ATS SYSTEMS for GENERATORS*



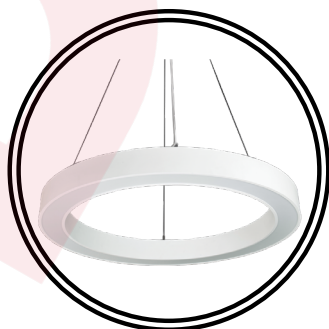
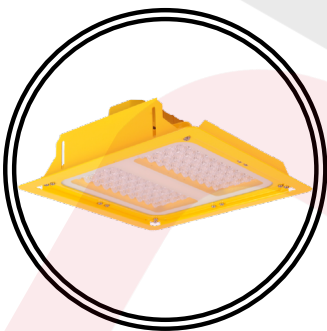


LIGHTING FIXTURES

A light fixture luminaire is an electrical device containing an electric lamp that provides illumination. Light fixtures may have other features, such as reflectors for directing the light, an aperture (with or without a lens), an outer shell or housing for lamp alignment and protection, an electrical ballast or power supply, and a shade to diffuse the light or direct it towards a workspace (e.g., a desk lamp). A wide variety of special light fixtures are created for use in the automotive lighting industry, aerospace, marine and medicine sectors, hazardous areas etc.



- INDOOR LIGHTING
- *OUTDOOR LIGHTING*
- INDUSTRIAL LIGHTING
- *EX-PROOF LIGHTING*



Indoor Lighting



- **Recessed Mounted Lighting**

- 7 Lamella Double Parabolic
- 9 Lamella Double Parabolic
- 9 Lamella Matte Double Parabolic
- Prismatic Lens Luminaire
- Opal Lens Luminaire
- UV-C Office Luminaire
- UV-C Sterile IP65 Luminaire
- Backlight Panel
- Mesh Louver Luminaire
- Panel Luminaire
- IP54 LED Sterile
- Slim LED Panel Luminaire
- Metal Suspended Ceiling Slim LED Panel Luminaire
- Drywall Ceiling Slim LED Panel Luminaire
- IP65 Tempered Glass Sterile Luminaire
- IP65 Tempered Glass Sterile Indirect Luminaire
- IP65 Sandblasted Glass Sterile Luminaire
- Indirect Parabolic Luminaire
- Indirect Louver Luminaire
- Perforated Indirect Luminaire
- Lamella Ceiling Luminaire
- Decorative Luminaire
- Linear Luminaire



- **Ceiling Lighting**

- LED Ceiling Luminaire
- 32W Ceiling Luminaire
- Globe Luminaire
- Globe Luminaire with Sensor
- LED with Sensor

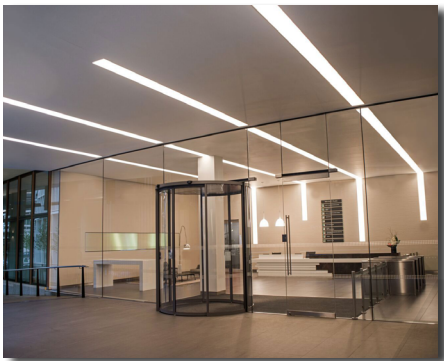


Indoor Lighting



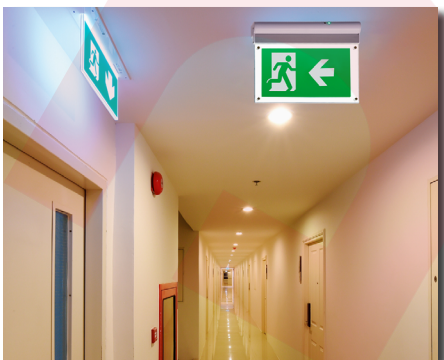
- **Surface Mounted Lighting**

- 7 Lamella Double Parabolic Luminaire
- Prismatic Lens Luminaire
- Mesh Louver Luminaire
- Backlight Panel
- Panel Luminaire
- IP65 LED Sterile
- Perforated Indirect Luminaire
- Parabolic Perforated Indirect Luminaire
- Mesh Louver Indirect Luminaire
- IP65 Tempered Glass Parabolic Luminaire
- IP65 Sandblasted Glass Luminaire



- **Downlight / Spotlight**

- Horizontal Downlight
- Vertical Downlight
- Aluminium Injection
- Inner Diffuser
- Flat Diffuser
- Recessed Mounted Downlight with Glass
- COB LED Downlight
- Slim LED Panel Downlight
- Surface Mounted Horizontal Downlight
- Surface Mounted Oval Downlight
- Surface Mounted Downlight with Glass
- Surface Mounted COB LED Downlight
- Surface Mounted Square Downlight with Glass
- Surface Mounted Spotlight
- Recessed Mounted Spotlight
- Track Spot Luminaire



- **Emergency Lighting**

- Emergency Spots
- Emergency LED Spots
- LED Lanterns
- Emergency Exit Luminaire
- Direction Legends

Outdoor Lighting

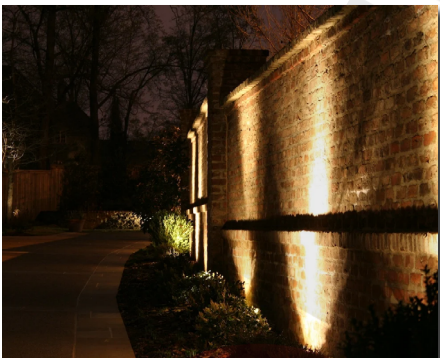


- **Road and Street Luminaire**

- Road and Street Luminaire
- LED Road and Street Luminaire
- Catenary Luminaire
- Accessories

- **Floodlights**

- Floodlights
- Symmetric Floodlights
- Asymmetric Floodlights
- Halogen Floodlights
- Tunnel Luminaire
- LED Floodlights
- High Pressure Ballast Kits
- High Pressure Lamp
- Surface Mounted RGB Wall-washer
- Recessed Wall-washer
- Pool Luminaire
- Rain LED Projector



- **Park and Garden Luminaire**

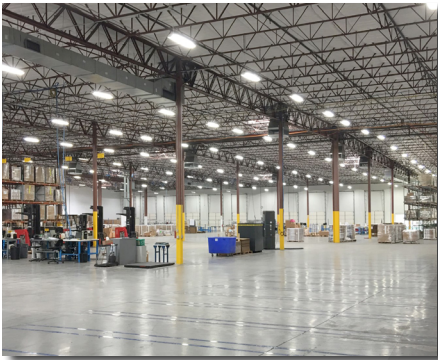
- Injection Aluminium Indirect Luminaire
- Park and Garden Luminaire
- Park and Garden Luminaire Sets
- Grass Luminaire
- Wall Top Luminaire
- LED Appliqués
- Appliqués
- Outdoor Globes
- Recessed Wall Appliqué Luminaire



Industrial Lighting



- **High Bay Luminaire**
 - Highbay Luminaire
 - Lowbay Luminaire
 - LED Highbay Luminaire
 - IP44 Highbay Luminaire
 - IP20 Highbay Luminaire
 - Square Highbay Luminaire



- **Waterproof Luminaire**
 - Waterproof T8 Luminaire
 - Waterproof T5 Luminaire
 - Waterproof Luminaire
 - LED Waterproof Luminaire
 - Batten Luminaire
 - TMS T5 Luminaire
 - TMS T8 Luminaire
 - Cove Lighting Luminaire
 - Batten Luminaire with IP65 Lamp holders
 - Fibreglass Luminaires with IP65 Lamp holders
 - Supermarket Luminaire



- **Canopy Luminaire**
 - Recessed Petrol Canopy Luminaire
 - Recessed Canopy Luminaire
 - Surface Mounted Canopy Luminaire
 - Recessed LED Canopy Luminaire



- **Other special designed products according to customers' projects or needs**

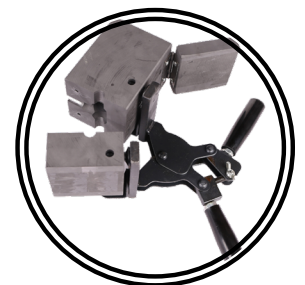
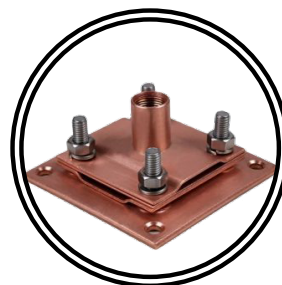
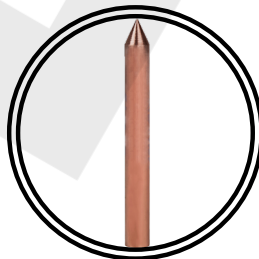


EARTHING – LIGHTNING & THERMO WELDING MATERIALS

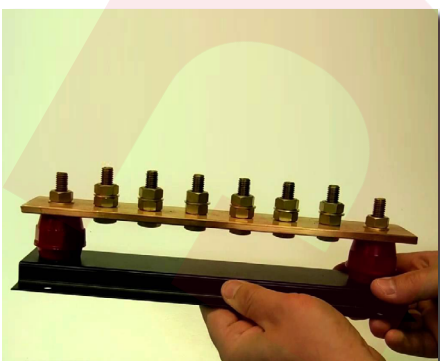
Grounding(Earthing) systems connect particular portions of an electric power system to the ground often the Earth's conductive surface for safety and functionality. The selection of an earthing system might have an impact on the installation's safety and electromagnetic compatibility. Regulations for earthing systems vary greatly between nations, however most adhere to the International Electro technical Commission's guidelines. Special circumstances for earthing in mines, patient care facilities, or dangerous regions of industrial operations may be identified by regulations.



- EARTHING SYSTEMS
- THERMO WELDING SYSTEMS
- EXTERNAL LIGHTNING SYSTEMS
- INTERNAL LIGHTNING SYSTEMS



Earthing Systems



- **Earthing Conductors**

- Mono Copper Conductor
- Stranded Copper Conductor
- CCA Conductor
- Copper Tape Conductor
- Galvanized Tape Conductor(Hot Dipped)
- PVC Covered Copper Tape
- Mono Aluminium Conductor
- Mono Galvanized Conductor
- Stranded Galvanized Conductor
- Flexible Stranded Copper Conductor
- Flexible Tape Copper Conductor

- ***Equipotential Earth Bars***

- *Equipotential Bar Flat Type*
- *Equipotential Bar*
- *Equipotential Bar With One Separator*
- *Equipotential Bar With Two Separator*
- *M6 Insulator*
- *Special Insulator*
- *Bar Box*
- *Panel Earthing Clamp*
- *Bar For Inspection*

- **Earthing Electrodes**

- Solid Copper Earthing Rode
- Copper Plated Steel Earthing Rod
- Copper Plated Steel Earthing Rod (250 Microns)
- Earthing Plate
- Earthing Mat
- Earthing Grid
- Angle Type Earthing Rode
- Galvanized Steel Earthing Rode

Earthing Systems



- **Earthing Rod Elements**

- Rod Driving Stud
- Rod Coupling Dowell
- Rod Spike

- **Inspection Pits**

- *Plastic Inspection Pit*
- *Galvanized Inspection Pit*
- *Concrete Inspection Pit*



- **Earth Points**

- Earth Boss
- Earthing Point
- Four Holes Earthing Point (Cable Welded)
- Earthing Point Box

- **Electrical Safety Equipment**

- *Danger Warning Plate*
- *Active Lightning Conductor Warning Plate*
- *Static Electric Plate*
- *Static Electric Reel*
- *Electronic Controlled Static Electric Reel*



- **Electrical Insulation Material**

- Rotary switches are used for branch circuit protection of lighting, equipment and motor circuits in hazardous areas. They provide a disconnect means, short circuit protection, and thermal time delay overload protection.



- **Ground Enhancement Material**

- *GEM Ground Enhancement Material*
- *TDM Ground Enhancement Material*
- *TDM Plus Ground Enhancement Material*

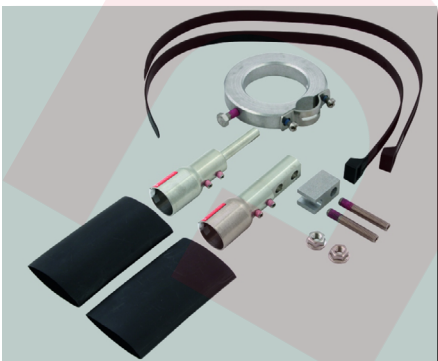
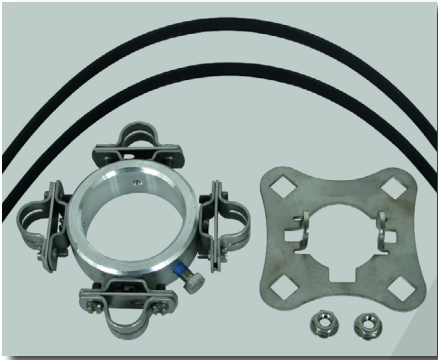
Earthing Systems



- **Earthing Resistance Test Devices**
 - 4105A – Earthing Resistance Test Device
 - ERT-S Earthing Resistance Test Device
 - ST2000 – Earthing Resistance Test Device

- **Conductor Connection Elements**

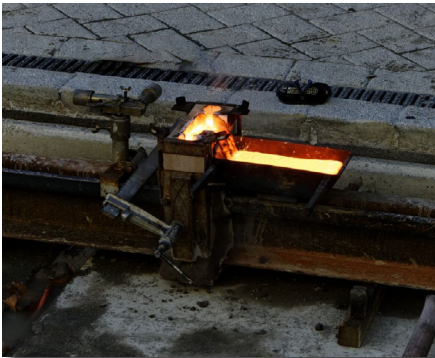
- Cable Clips
- Flat Type Cable Connection Tube
- Cable Lug
- Bimetallic Cable Lug
- Dilatation Clamp
- Reinforcement Clamp (Type 2)
- Reinforcement Clamp (Type 4)
- Reinforcement Clamp (Type 5)
- Parallel Joining Clamp
- Split Bolt Clamp
- Bimetallic Washer
- Claw Type Clamp
- C Clamp
- Hydraulic Crimping Tool
- Dies Set
- H Clamp
- U Clamp
- Practical Connection Clamp
- Triangle T Clamp
- Red Clamp
- T Type Cable Connection Tube
- Quad Type Cable Connection Tube
- Square Clamp (Round Type)
- Square Clamp (T Type)
- Square Clamp (Quad Type)
- Square Clamp (Tape-Tape Conductor)
- Square Clamp (Tape-Round Conductor)
- Square Clamp (Tape Conductor-Reinforcement)
- Square Clamp (Round Conductor-Reinforcement)
- Square Clamp (Tape-Round Conductor)



Thermo Welding Systems

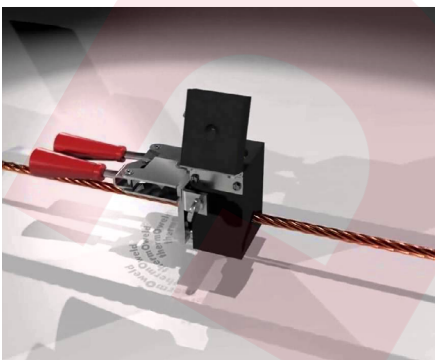


- **Welding Powder**
- **Welding Mould**
- **Flint Gun**
- **Mould Sealer**
- **Corrosion Tape Strip**
- **Handle Clamp**
- **Igniter (Lighter)**
- **Mould Cleaning Scraper**
- **Mould Cleaning Brush**



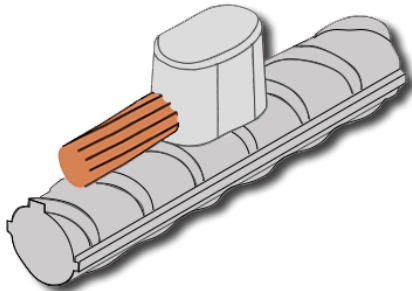
Types

- **Bar to Bar**
 - BB1: Conductor size from 25×3 to 50x6mm
 - BB3: Conductor size from 25×3 to 50x6mm
 - BB7: Conductor size from 25×3 to 50x6mm
 - BB14: Conductor size from 25×3 to 50x6mm
 - BB41: Conductor size from 25×3 to 50x6mm (For both side)
- **Bar to Earthing Rod**
 - BE1: Conductor size from 16 to 20mm and 25×3 to 50x5mm
 - BE2: Conductor size from 16 to 20mm² and 25×3 to 50x5mm
- **Bar to Steel Surface**
 - BSS1: Conductor size from 25×3 to 50x6mm
 - BSS2: Conductor size from 25×3 to 50x5mm
 - BSS3: Conductor size from 25×3 to 50x6mm
- **Cable to Bar**
 - CB1: Conductor size from 10 to 300mm² and 25×3 to 50x6mm
 - CB4: Conductor size from 10 to 300mm² and 25×3 to 50x5mm
 - CB5: Conductor size from 10 to 300mm² and 25×3 to 50x6mm
- **Cable to Earthing Rod**
 - CE1: Conductor size from 16 to 20mm and 16 to 300mm²
 - CE2: Conductor size from 16 to 20mm and 8 to 300mm²

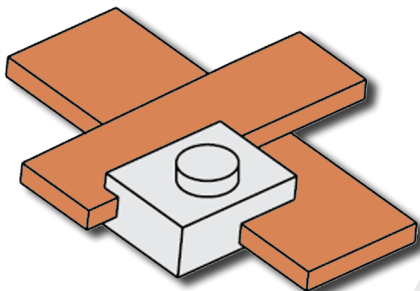


Thermo Welding Systems

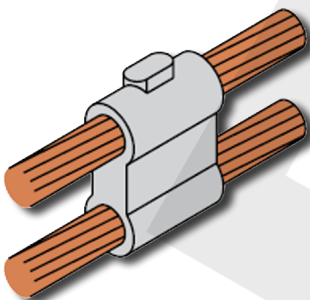
Types



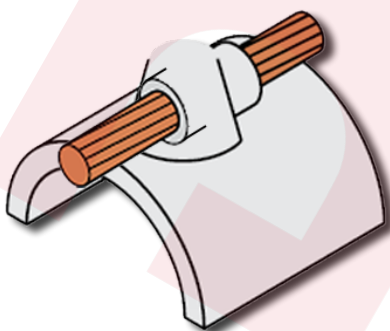
- **Cable to Railway**
 - R4R: Conductor size from 16 to 150
 - R5: Conductor size from 16 to 150
 - R6: Conductor size 25×3
 - R12: Conductor size from 25 to 120



- **Cable to Cable**
 - CC1: Conductor size from 10 to 630 mm²
 - CC2: Conductor size from 10 to 630 mm² and 10 to 630mm²
 - CC4: Conductor size from 10 to 240 mm² and 10 to 240mm²
 - CC6: Conductor size from 16 to 120 mm² and 16 to 120mm²
 - CC7: Conductor size from 10 to 300 mm² and 10 to 300mm²
 - CC11: Conductor size from 10 to 240 mm² and 10 to 240mm²
 - CC14: Conductor size from 10 to 120 mm² and 10 to 120mm²



- **Cable to Reinforcement**
 - CR1: Conductor size from 20mm and 10 to 120mm²
 - CR2: Conductor size from 16 to 30mm and 10 to 120mm²
 - CR3: Conductor size from 10-40mm² and 10 to 120mm²
 - CR6: Conductor size from 10-40mm² and 10 to 120mm²
 - CR17: Conductor size from 20mm² and 10 to 120mm²



- **Cable to Reinforcement**
 - CSS1: Conductor size from 10 to 300mm²
 - CSS2: Conductor size from 10 to 300mm²
 - CSS3: Conductor size from 10 to 300mm²
 - CSS8: Conductor size from 10 to 300mm²
 - CSS25: Conductor size from 10 to 300mm²
 - CSS27: Conductor size from 10 to 300mm²
 - CSS32: Conductor size from 4 to 70mm² and <70 to >250mm
 - CSS34: Conductor size from 4 to 50mm² and <70 to >250mm

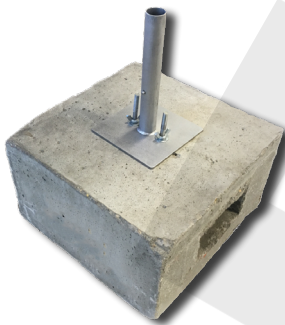
External Lightning Systems



- **E.S.E Active Lightning Rods**
 - FRANKLIN FRANCE SE 15 – Piezoelectric Crystal E.S.E Active Lightning Rod
 - FRANKLIN FRANCE 2D – Remote Controlled E.S.E Active Lightning Rod
 - FRANKLIN FRANCE 4D – Remote Controlled E.S.E Active Lightning Rod
 - TESLA ST – E.S.E Active Lightning Rod TESLA Tester
 - PETEX – E.S.E Active Lightning Rod
 - FOREND PETEX – E.S.E Active Lightning Rod
 - FOREND EU – E.S.E Active Lightning Rod
 - SCHIRTEC S-DA – E.S.E Active Lightning Rod
 - FOREND Tester
 - 2D Tester
 - SCHIRTEC Test SA – 1T



- **Pole Clamps**
 - Flat Type Pole Clamp
 - Wall Type Pole Clamp
 - Pylon Type Pole Clamp
 - U Type Pole Clamp
 - Foot Type Pole Clamp
 - Protection Pipe Clamp
 - Insulating Type Pipe Clamp

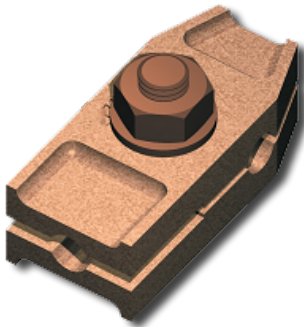


- **Pole Bases**
 - Analogue Lightning Strike Counter
 - Digital Lightning Strike Counter
 - Equipotential Bonding Clamp

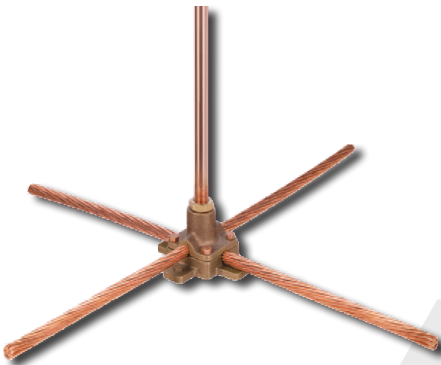


- **Lightning Strike Counter**
 - Analogue Lightning Strike Counter
 - Digital Lightning Strike Counter
- **Pole Adapters**
 - Analogue Lightning Strike Counter
 - Digital Lightning Strike Counter

External Lightning Systems



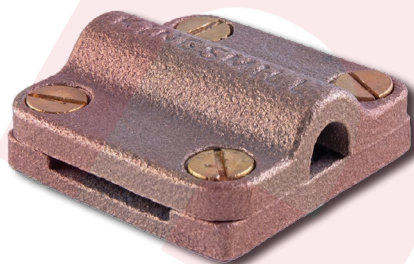
- **Test Clamps**
 - Test Clamp
 - Earthing System Separator
- **Pole Stretch Components**
 - PVC Insulated Stretch Wire
 - Stretch Wire Vice
 - Stretch Wire Clamp
 - Stretch Wire Clip
 - Stretch Wire Fixing Base
 - Stretch Wire Pile



- **Air Terminals**
 - Li-Term Air Terminal Systems
 - Brass Air Terminal
 - Steel Air Terminal
 - Copper Air Terminal
 - Aluminium Air Terminal
 - Stainless Steel Air Terminal
 - Multi Point Air Terminal



- **Fixing Clamps**
 - T Flat Conductor Clamp
 - U Clamp
 - L Clamp
 - One Hole Clamp
 - Snail Clamp
 - DC Clamp
 - Sticky Pad
 - Steel Screwed Clamp
 - Brass Screwed Clamp
 - Z Clamp
 - Pylon Clamp
 - Ridge Clamp
 - Pole Clamp
 - Isolated Clamp
 - Isolated Ground Clamp Component
 - Adhesive

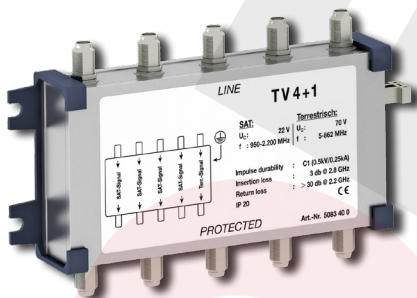


External Lightning Systems



- **Fixing Bases**
 - Flat Type Air Terminal Fixing Base
 - Isolated Type Air Terminal Fixing Base
 - Cross Type Air Terminal Fixing Base
 - A Type Air Terminal Fixing Bases
 - Curved Type Air Terminal Fixing Base
 - Concrete Type Air Terminal Fixing Base
 - Bronze Type Air Terminal Fixing Base
 - Tape Type Air Terminal Fixing Base
 - Omega Type Air Terminal Fixing Base
 - Pipe Type Air Terminal Fixing Base
 - Ridge Type Air Terminal Fixing Base
 - Wall Type Air Terminal Fixing Base

Internal Lightning Systems



- **E.S.E Active Lightning Rods**
- **Spark Gap Protection**
- **Telecom Line Protection Device**
- **Ethernet Line Protection Device**
- **Satellite Line Protection Device**



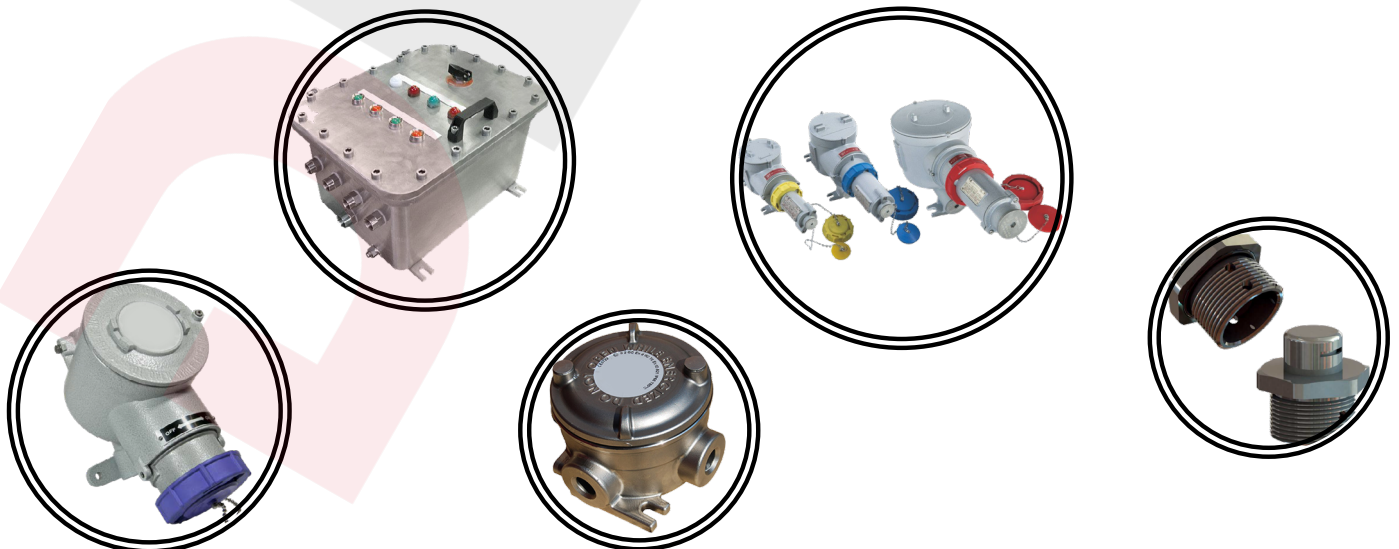


EX-PROOF ELECTRICAL MATERIALS

Hazardous sites in electrical and safety engineering are areas that could experience a fire or an explosion. These dangers can be caused by flammable or combustible gases, vapours, dust, fibres, and flying objects. Due to electrical arcing or high temperatures, electrical equipment positioned in these areas could act as an ignition source. To identify such areas, categorise the hazards, and design equipment for safe usage in such settings, standards and regulations are in place. Hazardous areas are made safe thanks to ex-proof equipment



- EX-PROOF LIGHTINGS
- EX-PROOF CABLE GLANDS
- EX-PROOF PLUGS, SOCKETS and OTHER FITTINGS
- EX-PROOF JUNCTION BOX and ENCLOSURE SYSTEMS
- EX-PROOF CONTROL PANELS



Ex-Proof Lightings



- Ex-proof Luminaries
- *Ex-proof Floodlight*
- Ex-proof High-bay Luminaries
- *Ex-proof LED Canopy Luminaries*
- Ex-proof Spotlight
- *Ex-proof Portable Lighting Fixtures*
- Ex-proof Emergency, Warning and Signal Lighting

Ex-Proof Cable Glands



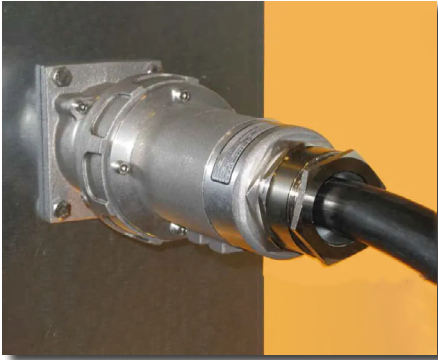
- Ex-Proof Brass Cable Glands
- *Ex-Proof Stainless Steel Cable Glands*
- Ex-Proof Plastic Cable Glands
- *Ex-Proof Pressure Equalisation and Drain Plug*
- Ex-Proof Blind Plug

Ex-Proof Control Panels



- Ex-Proof Control Stations
- *'Ex d/tb' Electronic Grounding System*
- *'Ex eb/tb' Electronic Grounding System*
- *Ex-Proof Grounding Clamp*
- Ex-Proof Breaker
- *Ex-Proof Instrument Housings*
- Ex-Proof Rotary Switches
- *Ex-Proof Limit Switches*

Ex-proof Plugs, Sockets & Other Fittings



- Ex-Proof Sockets
- *Ex-Proof Plugs*
- Ex-Proof Sockets with Circuit Breaker
- *Ex-Proof Drain and Breather Valve*
- Ex-Proof Sealing Nipples and Bushings
- *Ex-Proof Electrical Fittings*
- Ex-Proof Flexible Conduits
- *Ex-Proof Rigid Conduits*

Ex-Proof Junction Box & Enclosure Systems

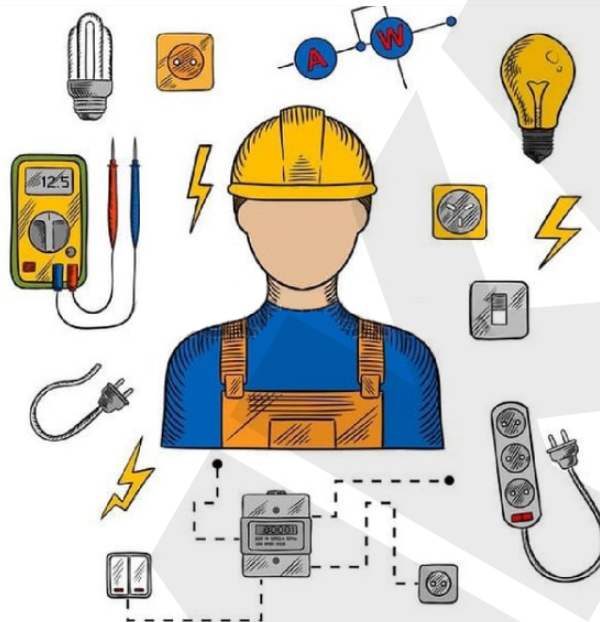


- Ex-Proof Junction Box
- *Ex-Proof Round Junction Box*
- Ex-Proof Control, Monitoring and Signalling Devices
- *Ex-Proof Aluminium Enclosure Systems*
- Ex-Proof Polyester Enclosure Systems
- *Ex-Proof Stainless Steel Enclosure Systems*
- Ex-Proof Hand-held Enclosure Systems

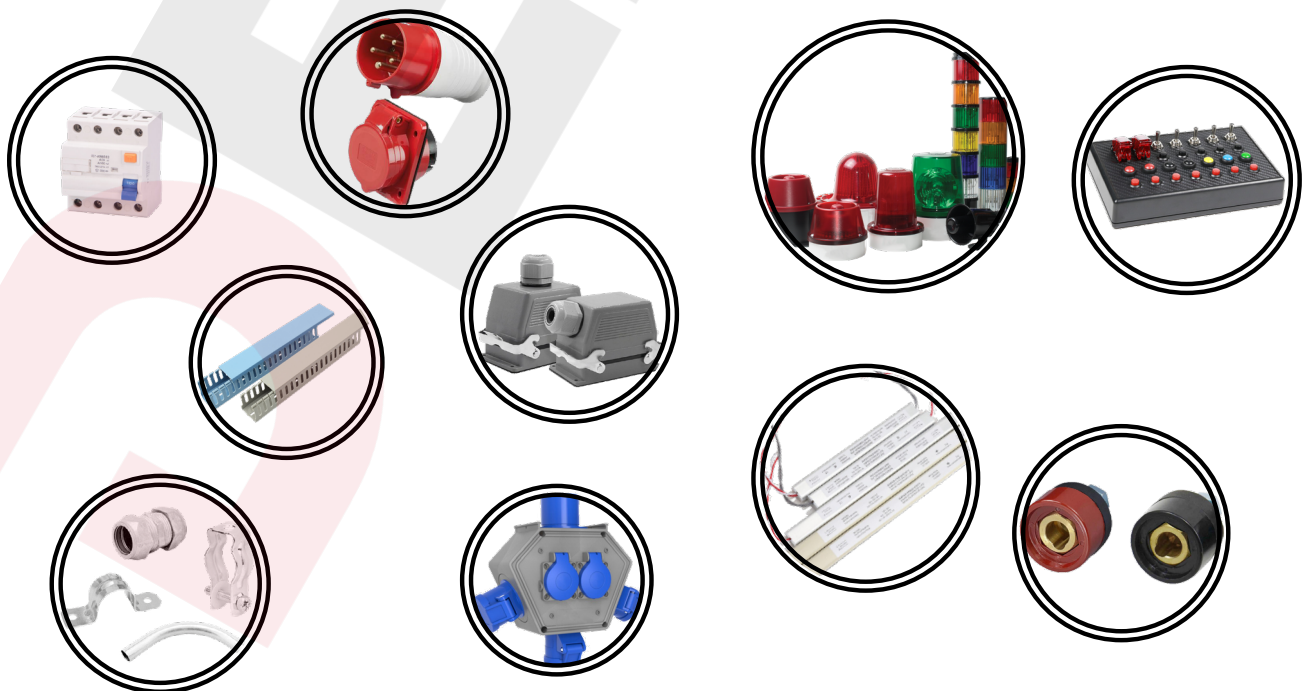




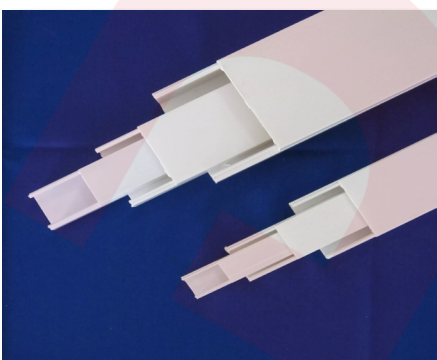
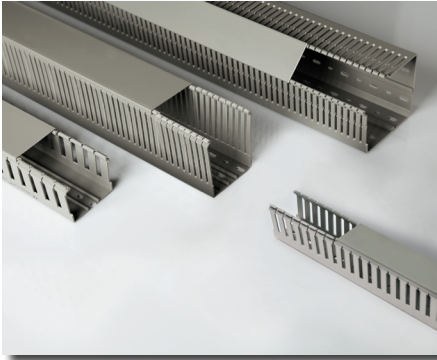
OTHER ELECTRICAL EQUIPMENT



- *PVC CABLE TRUNKINGS & ACCESSORIES*
- *INDUSTRIAL/RESIDENTIAL SWITCHES, SOCKETS, BOXES & OTHER MATERIALS*
- *LV/MV POWER DISTRIBUTION EQUIPMENTS*
- *LV/HV CABLE ACCESSORIES*
- *MV/HV DISCONNECTORS ACCESSORIES*

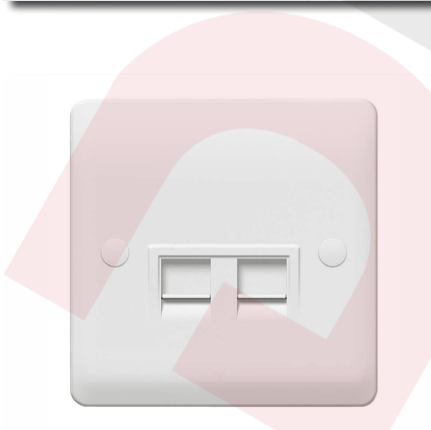
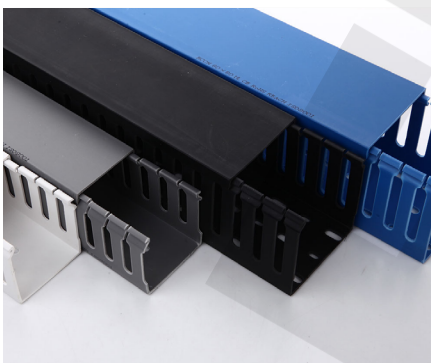


PVC Cable Trunkings & Accessories



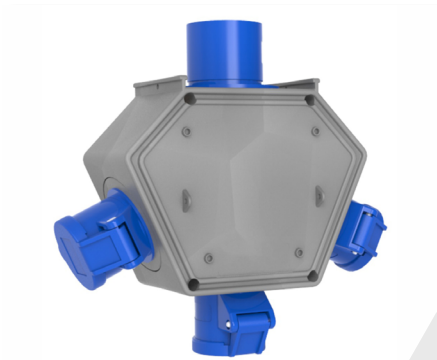
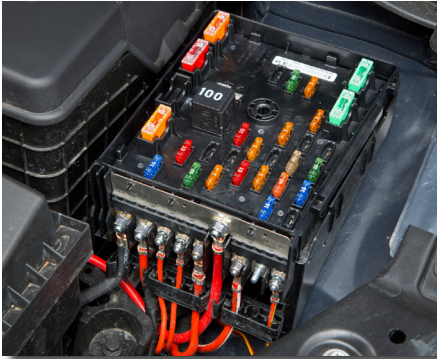
- Self-Adhesive Cable Trunkings and Assembly Sets
- Outlets
- *Single Pole / Double Poles Switches*
- Halogen-free / Self-Extinguishing Conduits and Fittings
- *Dual Switches – Two Pole Switches – Commutators*
- Boxes / Cases
- *Triple Switches*
- EMT Conduits and Fittings
- *Push Button Switches*
- IMC / RSC Conduits and Fittings
- *Two Way Switches – Double Two Way Switches*
- Flexible Conduits and Fittings
- *Reversing Switches*
- PVC / Polyamide and PP Flexible
- *Conduits and Fittings*
- Shutter Push Button Switches – Shutter Push One Button Switches
- *Air Ducts*
- Door/Doorbell Push Button Switches
- *PVC Profiles*
- Socket Outlets – Earthed Socket
- *Outlets – Earthed Socket Outlets with UPS*
- External Cable Trunkings and Assembly Sets Outlets
- *Double Socket Outlets – Double Earthed Socket Outlets*
- Inside Cover Cable Trunkings and Assembly Sets Outlets
- *Double Earthed Socket Outlets with UPS*

PVC Cable Trunkings & Accessories



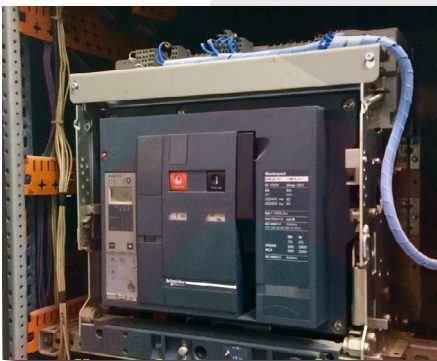
- Kicking Cable Trunking and Accessories
- *TV Socket Outlets – TV/Satellite Socket Outlets*
- Ground Cable Trunking and Accessories
- *Telephone Socket Outlets*
- Blue/Grey Slotted Trunking
- *All Type and Series Surface Mounted Switches & Sockets*
- Surface & Flush Mounted Fuse Boxes
- *All Type and Series Waterproof Switches & Sockets*
- Group Sockets with without Extension Cord and Plugs
- *Data Socket Outlets*
- Halogen-free Cable Trunkings and Assembly Set Outlets
- *Rotary Dimmer*
- British Type Assembly Sets for Cable Trunkings Outlets
- *All Type and Series Waterproof Switches & Sockets*
- Group Sockets with without Extension Cord and Plugs
- *Data Socket Outlets*
- Halogen-free Cable Trunkings and Assembly Set Outlets
- *Rotary Dimmer*
- British Type Assembly Sets for Cable Trunkings Outlets
- *All Type and Series Waterproof Switches & Sockets*
- Group Sockets with without Extension Cord and Plugs
- Other special designed products according to customers' projects or needs

Residential Switches, Sockets, Boxes & Other Materials



- Monophase / Three-Phase Plug-in Plug-Sockets
- *Metal Cable Reels*
- CEE Norm Plugs-Sockets
- *PVC Cable Reels*
- Flat Plugs-Sockets
- *Hand Lamps*
- Arc Welding Plugs-Sockets
- *Transformer Lighting*
- Heavy Duty Connectors
- *Bottom Boxes*
- CEE group Plug-Socket
- *Fuse Boxes*
- CEE Poly Boxes
- *Switch Boxes*
- V5-V10-V17-V24 Combination Boxes
- *Energy Transfer Systems*

LV/MV Power Distribution Equipment



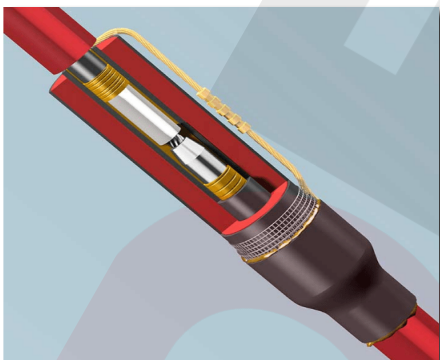
- MCCB's (Molded Case Circuit Breaker) and Accessories
- *MCB's (Miniature Circuit Breakers) and Accessories*
- ACB (Air Circuit Breakers) and Accessories
- *ATS (Automatic Transfer Switches) and Accessories*
- Magnetic and Thermal Magnetic Motor Circuit Breakers and Accessories
- *Switch Disconnectors and Accessories*
- Motor Starters and Accessories – Motor Protection Breakers

LV/MV Power Distribution Equipment



- Panel & DIN-Rail mounted Modular Selector Switches
- *Pushbuttons, Switches, Pilot Lights, Control Stations and Joysticks*
- Contactors and Protection Relays and Accessories
- *Vertical – Horizontal Switch Disconnecter*
- NH (Knife) Type Fuses and Accessories
- *Terminal Blocks and Bars*
- Modular Beacons and Tower Lights
- *UPS Systems*
- Residual Current Circuit Breakers (RCB)
- *Leakage Case Circuit Breakers*
- Energy Meters, Energy Analysers
- *Compensation Materials and Equipment*
- Voltage Regulators
- *Harmonic Filters, Frequency Converters, Inverters*
- LV Panel Screw Surge Arrestors
- *PLC and Automation Relays*

LV/HV Cable Accessories



- Resin Cable Joints for LV Cables; Straight Type, T Type, and Y Types
- *Heat Shrinkable Cable Joints for Cu. / Al. LV Cables*
- LV Cables Repairing Kit
- *Resin Cable Terminations for Single or Multicore LV Cables*
- Heat Shrinkable Cable Terminations for LV Cables
- *Resin Cable, Cable Joints for Single Core or Three Cores MV Cables*
- Heat Shrinkable Cable Joints for Single Core or Three Cores MV Cables
- *Heat Shrinkable Cable Terminations for Single or Multicore MV Cables*

LV/HV Cable Accessories



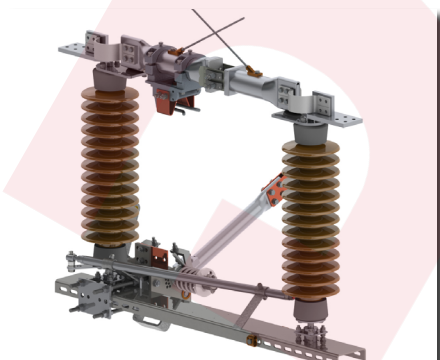
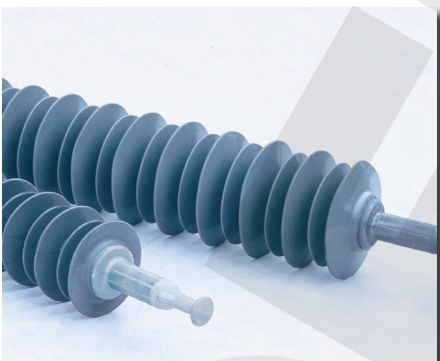
- T Type, L Type Cable Terminations for MV Cables
- *Heat Shrinkable Tubes*
- Polyamide, Brass, Nickel Plated Brass, Stainless Steel and Special Type Cable Glands
- *Cable Lugs*
- Cable Ferrules
- *Cable Markers*
- PVC, Stainless Steel Cable Ties
- *Mechanical / Hydraulic Cable Cutting Machines*
- Cable Cleats
- *Stripe Terminal, Euro Terminals*
- Cable Warning Tapes
- *Electrical Tape*
- Cable Clamps
- *All Other Cable Accessories*

MV/HV Disconnectors

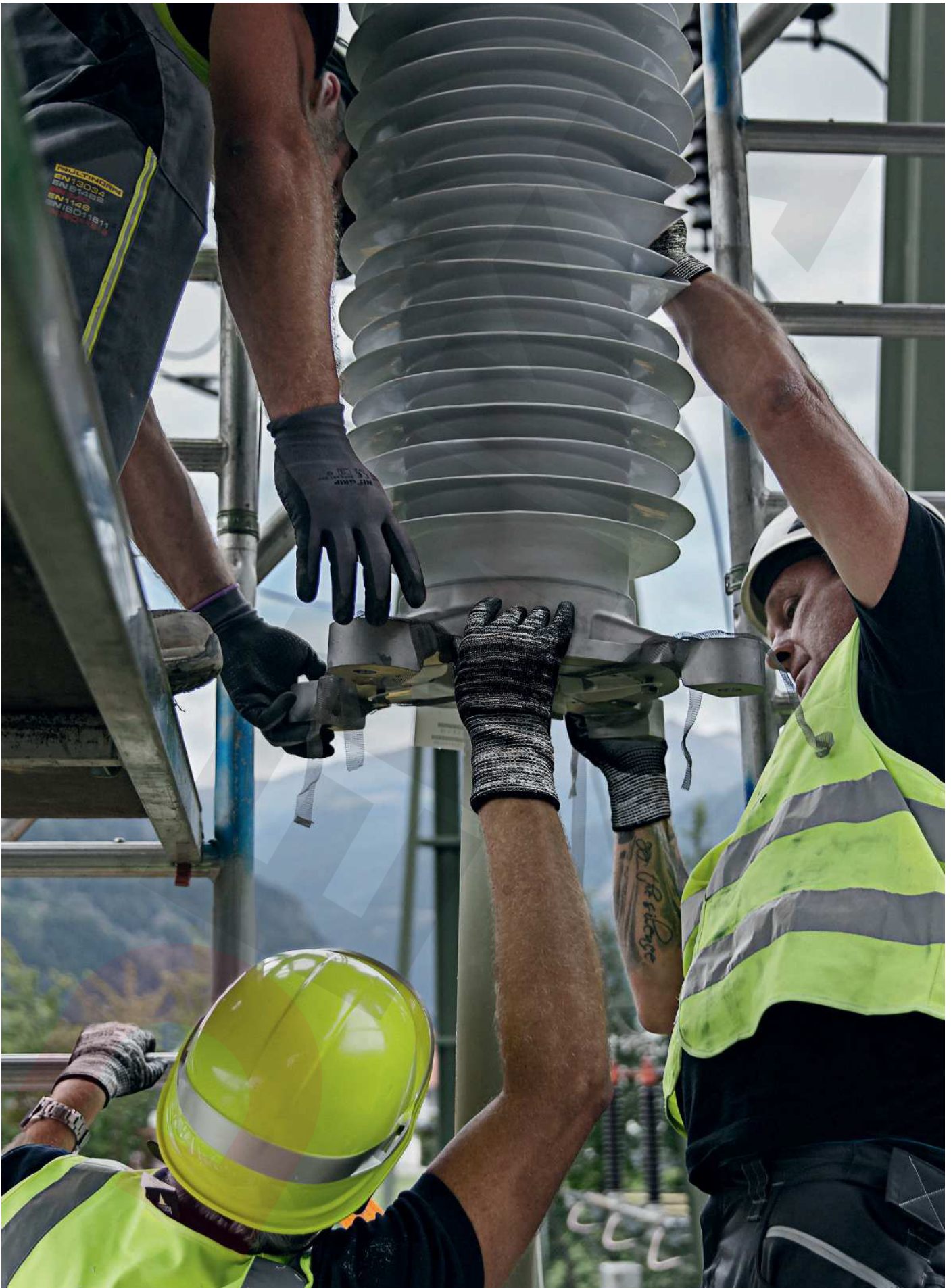


- H.V Centre Break Disconnectors
- *M.V Quick Make Earthing Switches*
- H.V Pantograph Disconnectors
- *M.V Disconnecter / Earthing Switches Mechanisms*
- H.V Horizontal Break Pantograph Disconnectors
- *M.V Indoor Switch Disconnecter fuse combinations (Knee Type)*
- Porcelain Housed Surge Arresters
- *H.V Earthing Switches*
- Porcelain Pin Type Insulators
- *H.V Current Limiting Back-Up Fuses*
- Porcelain String Insulators

MV/HV Disconnectors



- *H.V Indoor/Outdoor Fuse Bases*
- *Porcelain Line Post Insulators*
- *H.V Disconnector Operating Mechanisms*
- *Transformer Bushings*
- *M.V Indoor Rocking Disconnector*
- *Wall Bushings*
- *M.V Outdoor Rocking Disconnector*
- *Hollow Insulators (Capacitive Voltage Transformer Bushings)*
- *M.V Centre Break Disconnectors*
- *Outdoor Post Insulators*
- *M.V Double Break Disconnectors*
- *Indoor Post Insulators*
- *M.V Indoor Earthing Switches*
- *High Voltage Post Insulators*
- *M.V Outdoor Earthing Switches*
- *M.V Polymeric Housed Metal Oxide Surge Arresters*
- *DC Disconnectors for Railway Applications and Operating Mechanisms*
- *M.V Polymer Insulator*
- *Other special designed products according to customers' projects or needs*





DEMKA DIS TICARET ve PAZARLAMA A.S.

www.demkaexport.com demka@demkaexport.com

Barbaros Mh. Begonya Sk. Nidakule Ataşehir Kuzey 3A Kat: 21 No: 184

P.K.: 34746 Ataşehir / İstanbul, TÜRKİYE

Tel: +90 216 592 1616 Fax: +90 216 592 1626